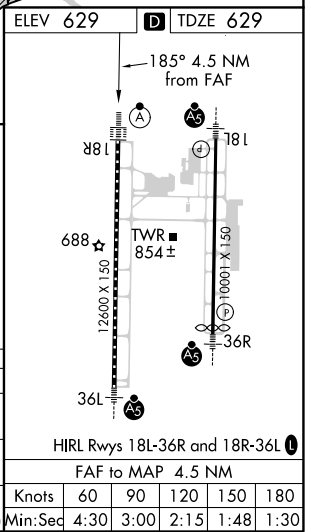
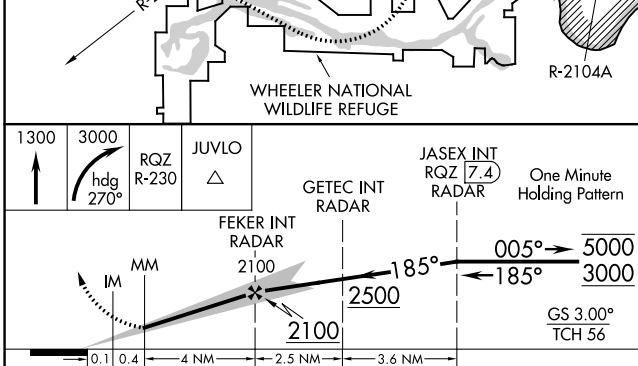
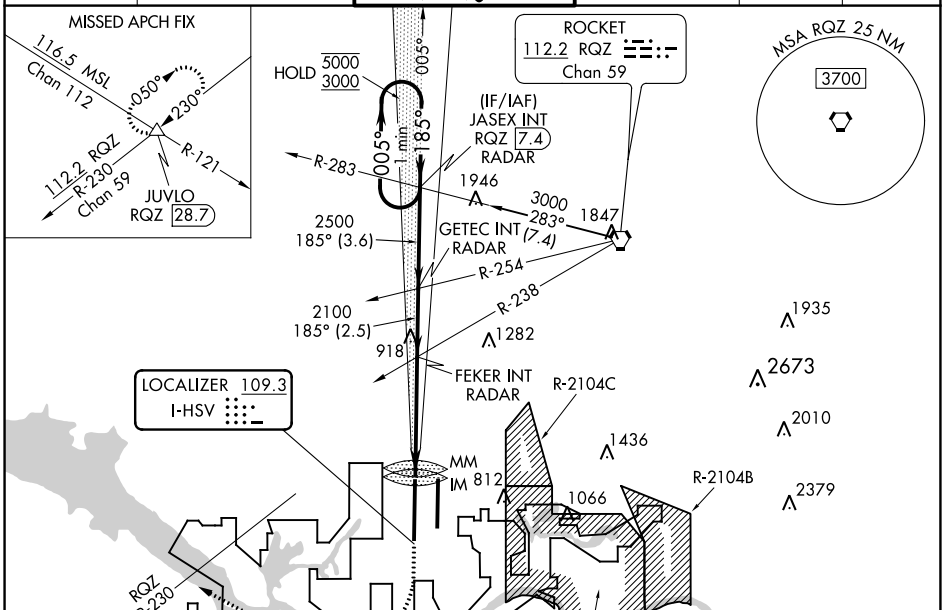


LOC I-HSV 109.3	APP CRS 185°	Rwy ldg 12600
		TDZE 629
		Apt Elev 629

ILS or LOC RWY 18R

HUNTSVILLE INTL-CARL T JONES FIELD (HSV)

⚠ Circling NA for Cat C/D/E east of Rwy 18L-36R. For inop ALS, increase S-ILS 18R Cat E visibility to RVR 4000 and S-LOC 18R Cat E visibility to ASR 1% SM. Simultaneous approach authorized.		ALSF-2 	MISSED APPROACH: Climb to 1300 then climbing right turn to 3000 on heading 270° and RQZ R-230 to JUVLO INT/RQZ 28.7 DME and hold.		
ATIS 121.25	HUNTSVILLE APP CON * 125.6 354.1	HUNTSVILLE TOWER * 127.6 (CTAF) 0 350.35	GND CON 121.9 269.525	CLNC DEL 120.35	UNICOM 122.95



CATEGORY	A	B	C	D	E
S-ILS 18R	829/18 200 (200-½)				
S-LOC 18R	1180/24 551 (600-½)	1180/60 551 (600-1¼)			
C CIRCLING	1180-1 551 (600-1)	1180-1¾ 551 (600-1¾)	1240-2 611 (700-2)	1260-2¼ 631 (700-2¼)	

SE-4, 05 NOV 2020 to 03 DEC 2020

SE-4, 05 NOV 2020 to 03 DEC 2020