

LOC/DME I-JJC 109.55 Chan 32 (Y)	APP CRS 005°	Rwy Idg 9801 TDZE 595 Apt Elev 629
--	------------------------	---

ILS or LOC RWY 36R

HUNTSVILLE INTL-CARL T JONES FIELD (HSV)

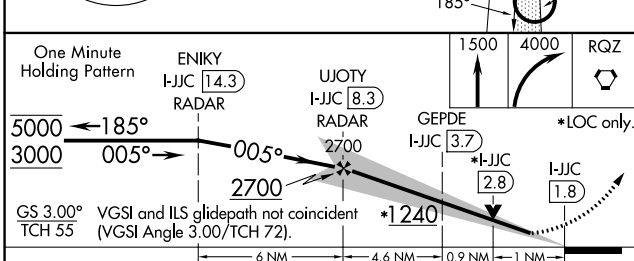
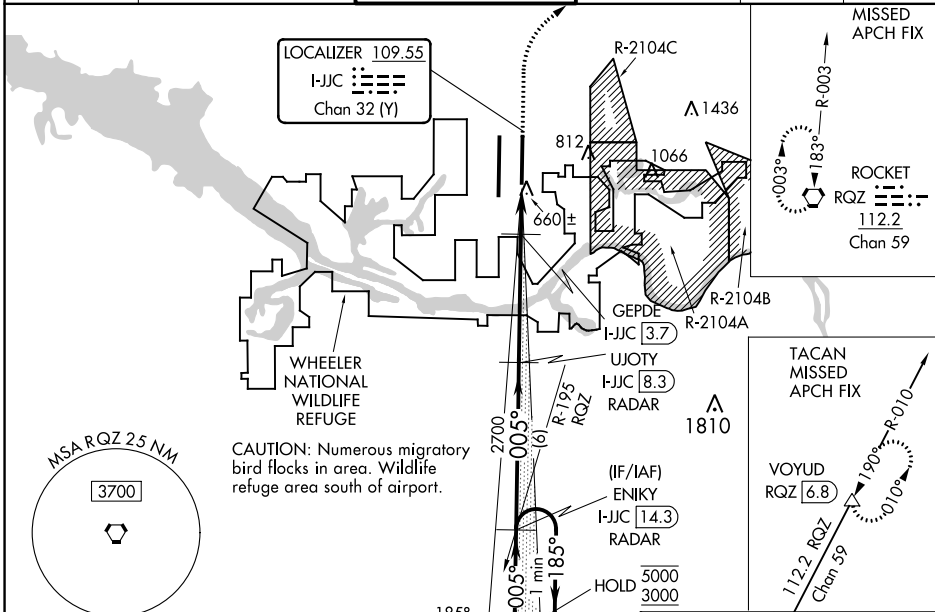
RADAR required for procedure entry. DME or RADAR required for LOC only.



MISSED APPROACH: Climb to 1500 then climbing right turn to 4000 direct RQZ VORTAC and hold. (TACAN aircraft climb to 5000 on RQZ VORTAC R-010 to VOYUD/RQZ 6.8 DME and hold north, left turn, 190° inbound).

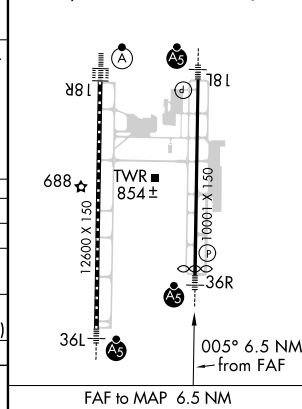
⚠ Simultaneous approach authorized. For inop ALS, increase S-ILS 36R Cat E visibility to RVR 4000 and S-LOC 36R Cat E to 1 $\frac{1}{8}$ SM.
⚠ GEPDE FIX MINIMUMS: Increase S-LOC 36R Cat E visibility to RVR 6000. Circling NA for Cat C/D/E east of Rwy 18L-36R.

ATIS 121.25	HUNTSVILLE APP CON * 125.6 354.1	HUNTSVILLE TOWER * 127.6 (CTAF) 350.35	GND CON 121.9 269.525	CLNC DEL 120.35	UNICOM 122.95
-----------------------	--	--	---------------------------------	---------------------------	-------------------------



ELEV 629	TDZE 595
----------	----------

TDZ/CL Rwys 18R and 36L
HIRL Rwys 18L-36R and 18R-36L



CATEGORY	A	B	C	D	E
S-ILS 36R	818/24 223 (200-1/2)				
S-LOC 36R	1240/24 645 (700-1/2)	1240-1 $\frac{3}{8}$ 645 (700-1 $\frac{3}{8}$)			
C CIRCLING	1240-1 611 (700-1)	1240-1 $\frac{7}{8}$ 611 (700-1 $\frac{7}{8}$)	1240-2 611 (700-2)	1260-2 $\frac{1}{4}$ 631 (700-2 $\frac{1}{4}$)	
GEPDE FIX MINIMUMS					
S-LOC 36R	980/24 385 (400-1/2)	980/35 385 (400-5/8)			
C CIRCLING	1160-1 531 (600-1)	1160-1 $\frac{1}{2}$ 531 (600-1 $\frac{1}{2}$)	1240-2 611 (700-2)	1260-2 $\frac{1}{4}$ 631 (700-2 $\frac{1}{4}$)	

FAF to MAP 6.5 NM					
Knots	60	90	120	150	180
Min:Sec	6:30	4:20	3:15	2:36	2:10

SE-4, 05 NOV 2020 to 03 DEC 2020

SE-4, 05 NOV 2020 to 03 DEC 2020