

WAAS CH 82606 W36A	APP CRS 005°	Rwy Idg 12600 TDZE 615 Apt Elev 629
--	------------------------	--

RNAV (GPS) RWY 36L

HUNTSVILLE INTL-CARL T JONES FIELD (HSV)

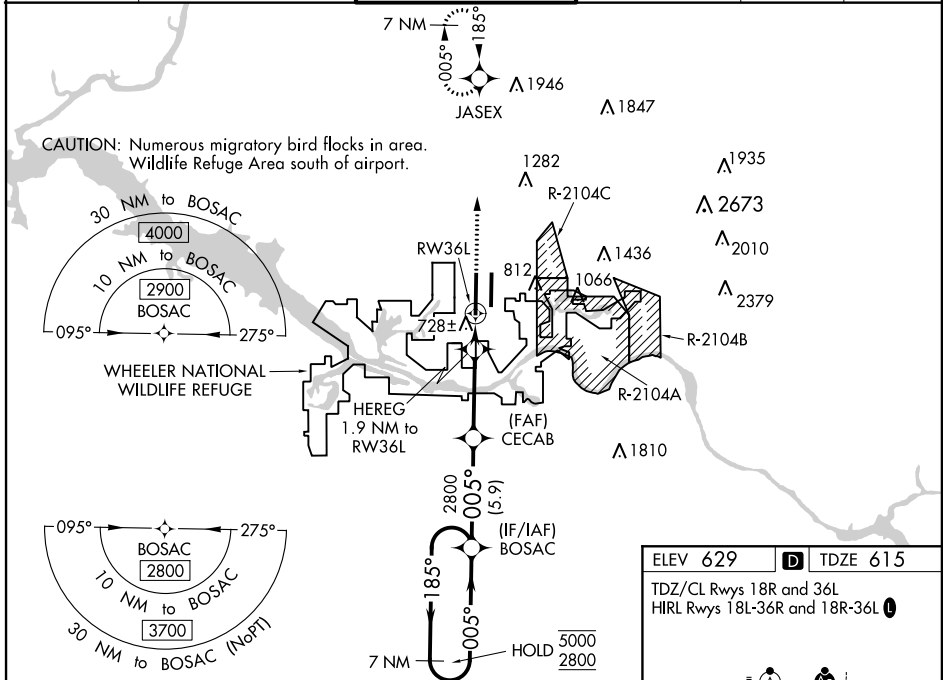
RNP APCH.

For uncompensated Baro-VNAV systems, LNAV/VNAV NA below -10°C or above 54°C. For inop ALS, increase LPV Cat E visibility to RVR 4000, LNAV/VNAV all Cats visibility to RVR 4500, and LNAV Cats C/D/E visibility to RVR 5500. Circling NA for Cats C/D/E east of Rwy 18L-36R. Simultaneous approach authorized. LNAV procedure NA during simultaneous operations. Use of FD or AP required during simultaneous operations.

MALS R

MISSED APPROACH: Climb to 3000 direct JASEX and hold.

ATIS 121.25	HUNTSVILLE APP CON ★ 125.6 354.1	HUNTSVILLE TOWER ★ 127.6 (CTAF) 350.35	GND CON 121.9 269.525	CLNC DEL 120.35	UNICOM 122.95
-----------------------	--	--	---------------------------------	---------------------------	-------------------------



ELEV 629 TDZE 615

TDZ/CL Rws 18R and 36L

HIRL Rws 18L-36R and 18R-36L

881

688

TWR 854±

12600 X 150

10000 X 150

36R

36L

005° to RW36L

7 NM Holding Pattern	BOSAC	CECAB 2800	HEREG 1.9 NM to RW36L	3000 JASEX	
5000 ← 185° → 005° → 2800			*1280	*1 NAV only.	
GP 3.00° TCH 53			*1 NM to RW36L	RW36L	
	5.9 NM	4.8 NM	0.9 NM	1 NM	
CATEGORY	A	B	C	D	E
LPV DA		815/18	200 (200-½)		
LNAV/VNAV DA		909/24	294 (300-½)		
LNAV MDA	980/24	365 (400-½)	980/35	365 (400-¾)	
CIRCLING	1160-1	531 (600-1)	1160-1½ 531 (600-1½)	1240-2 611 (700-2)	1260-2¼ 631 (700-2¼)

SE-4, 05 NOV 2020 to 03 DEC 2020

SE-4, 05 NOV 2020 to 03 DEC 2020