

WAAS CH 86606 W36B	APP CRS 005°	Rwy Idg TDZE 595 Apt Elev 629
--	------------------------	---

RNAV (GPS) RWY 36R

HUNTSVILLE INTL-CARL T JONES FIELD (HSV)

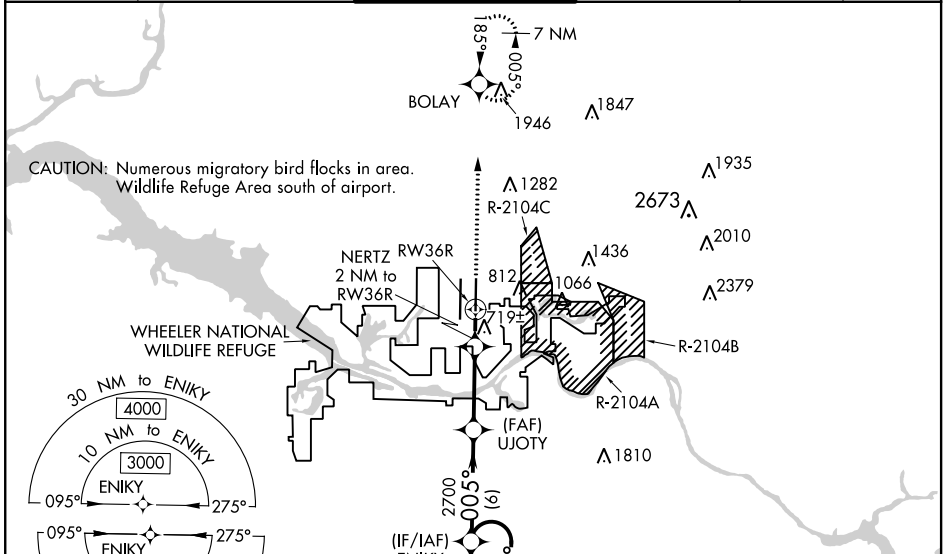
RNP APCH.

ASR Circling NA for Cats C/D/E east of Rwy 18L-36R. For uncompensated Baro-VNAV systems, LNAV/VNAV NA below -11°C or above 54°C. Simultaneous approach authorized. LNAV procedure NA during simultaneous operations. Use of FD or AP required during simultaneous operations. For inop ALS increase LPV Cat E visibility to RVR 4000, LNAV/VNAV Cat E visibility to RVR 5000 and LNAV Cat E visibility to RVR 6000.

MALSR

MISSED APPROACH: Climb to 3000 direct BOLAY and hold.

ATIS 121.25	HUNTSVILLE APP CON * 125.6 354.1	HUNTSVILLE TOWER * 127.6 (CTAF) 0 350.35	GND CON 121.9 269.525	CLNC DEL 120.35	UNICOM 122.95
-----------------------	--	--	---------------------------------	---------------------------	-------------------------



7 NM Holding Pattern ENIKY	VGSI and RNAV glidepath not coincident (VGSI Angle 3.00/TCH 72).				
5000 ← 185°	005° →	2700	3000	BOLAY	
3000		UJOTY	NERTZ 2 NM to RW36R	*LNAV only.	
GP 3.00°		2700	*1 NM to RW36R		
TCH 55		6 NM	4.5 NM	1 NM	1 NM
CATEGORY	A	B	C	D	E
LPV DA	801/24 206 (200-½)				
LNAV/DA	927/26 332 (300-½)				
LNAV MDA	980/24	385 (400-½)	980/35	385 (400-¾)	
CIRCLING	1160-1	531 (600-1)	1160-1½	1240-2	1260-2¼
			531 (600-1½)	611 (700-2)	631 (700-2¼)

ELEV 629 **D** TDZE 595

TDZ/CL Rws 18R and 36L
HIRL Rws 18L-36R and 18R-36L

36L

688

TWR 854±

18L

381

12600 X 150

005° to RW36R

SE-4, 05 NOV 2020 to 03 DEC 2020

SE-4, 05 NOV 2020 to 03 DEC 2020