

(KAYLN2.KAYLN) 19227

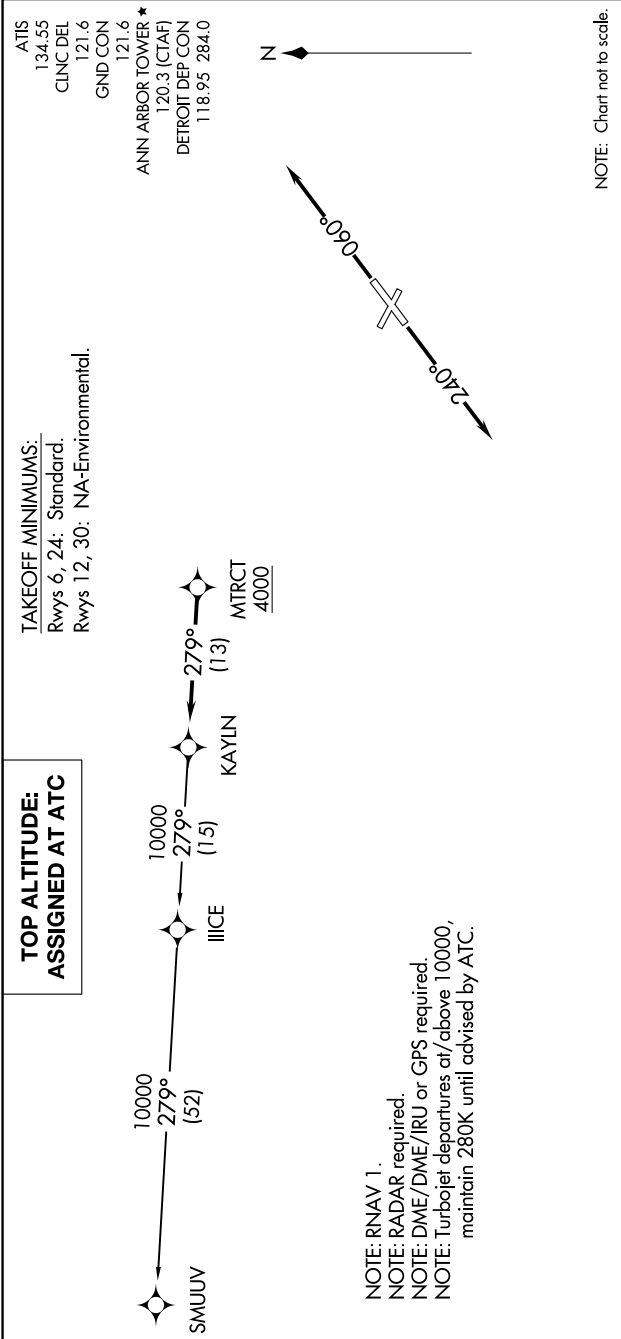
KAYLN TWO DEPARTURE (RNAV)

AL-5506 (FAA)

ANN ARBOR MUNI (ARB)

ANN ARBOR, MICHIGAN

EC-1, 05 NOV 2020 to 03 DEC 2020



NOTE: Chart not to scale.

DEPARTURE ROUTE DESCRIPTION

TAKEOFF RUNWAY 6: Climb on heading 060° or as assigned for RADAR vectors to cross MTRCT at or above 4000, thence....

TAKEOFF RUNWAY 24: Climb on heading 240° or as assigned for RADAR vectors to cross MTRCT at or above 4000, thence....

.....on track 279° to KAYLN, then on (transition). Maintain ATC assigned altitude, expect filed altitude 10 minutes after departure.

SMUUV TRANSITION (KAYLN2.SMUUV):

KAYLN TWO DEPARTURE (RNAV)

(KAYLN2.KAYLN) 15AUG19

ANN ARBOR, MICHIGAN
ANN ARBOR MUNI (ARB)

EC-1, 05 NOV 2020 to 03 DEC 2020