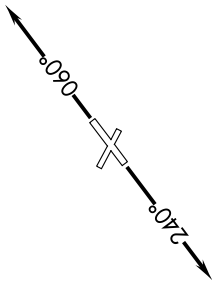
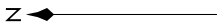


EC-1, 05 NOV 2020 to 03 DEC 2020

**TOP ALTITUDE:  
ASSIGNED BY ATC**

ATIS  
134.55  
CLNC DEL  
121.6  
GND CON  
121.6  
ANN ARBOR TOWER ★  
120.3 (CTAF)  
DETROIT DEP CON  
118.95 284.0



**DEPARTURE ROUTE DESCRIPTION**

**TAKEOFF RUNWAY 6:** Climb on heading 060° or as assigned for RADAR vectors to cross JWELS at or above 4000, thence....  
**TAKEOFF RUNWAY 24:** Climb on heading 240° or as assigned for RADAR vectors to cross JWELS at or above 4000, thence....

....on track 218° to SNDRS, then on (transition). Maintain ATC assigned altitude, expect filed altitude 10 minutes after departure.

BGHR TRANSITION (SNDRS2.BGHR):  
TORR TRANSITION (SNDRS2.TORR):

NOTE: RNAV 1.

NOTE: RADAR required.

NOTE: DME/DME/IRU or GPS required.

NOTE: Turbojet departures at/above 10000, maintain 280K until advised by ATC.

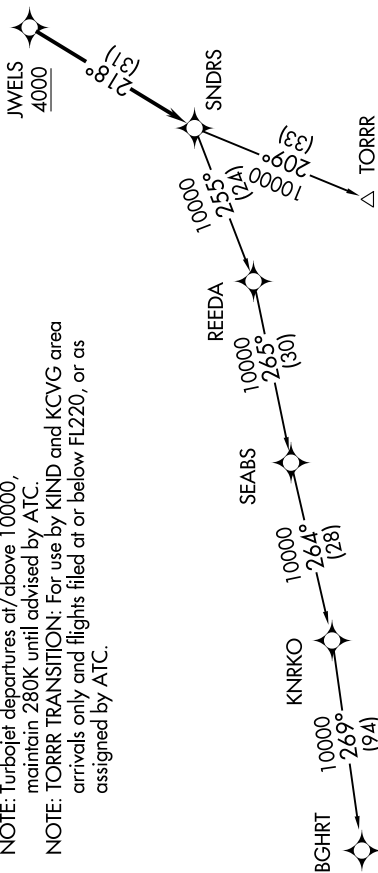
NOTE: TORR TRANSITION: For use by KIND and KCVG area arrivals only and flights filed at or below FL220, or as assigned by ATC.

**TAKEOFF MINIMUMS:**

Rwys 6, 24: Standard.

Rwys 12, 30: NA-Environmental.

NOTE: Chart not to scale.



EC-1, 05 NOV 2020 to 03 DEC 2020