

VORTAC SVM <b>114.3</b> Chan <b>90</b>	APP CRS <b>213°</b>	Rwy ldg TDZE <b>3505</b> <b>831</b>	Apt Elev <b>839</b>
----------------------------------------------	------------------------	-------------------------------------------	------------------------

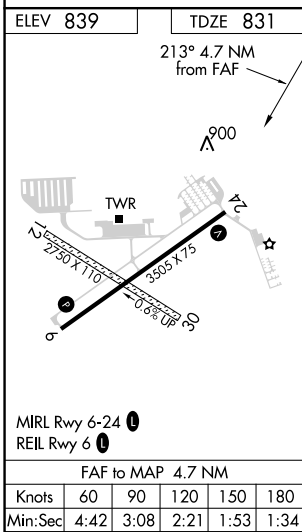
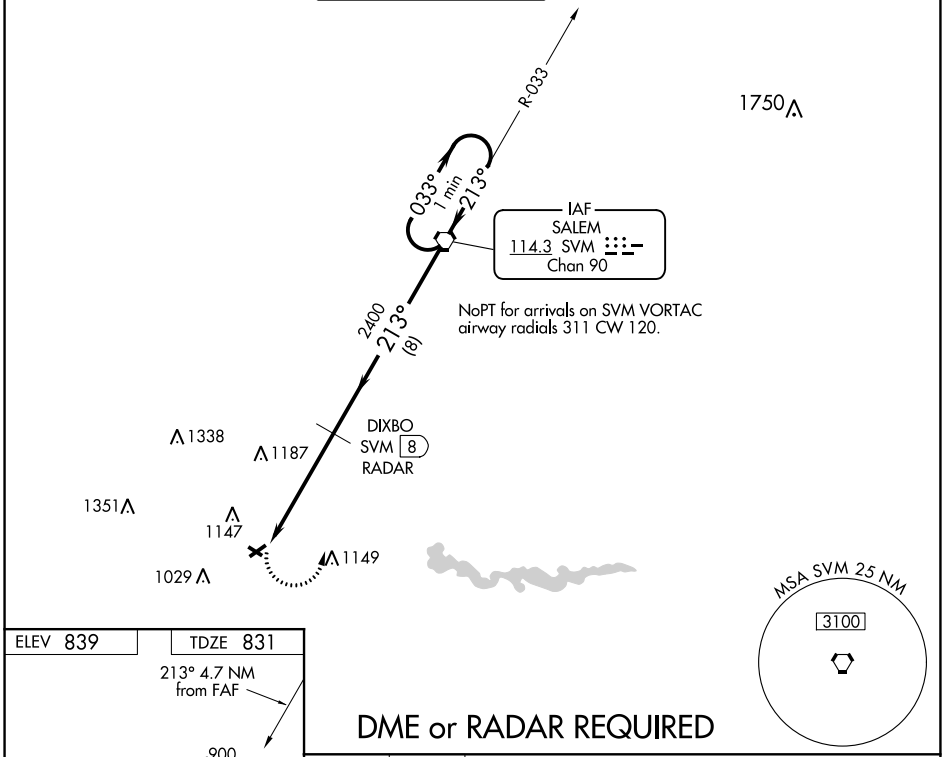
# VOR RWY 24

ANN ARBOR MUNI (ARB)

⚠ Inop table does not apply. Rwy 24 helicopter visibility reduction below 3/4 SM NA.  
 ⚠ When local altimeter setting not received, use Willow Run altimeter setting and increase all MDAs 40 feet and increase visibility S-24 Cat C/D visibility 1/8 SM and Circling Cat C/D visibility 1/4 SM. Circling NA to Rwy 12 and 30.

MISSED APPROACH: Climbing left turn to 3000 direct SVM VORTAC and hold.

ATIS <b>134.55</b>	DETROIT APP CON <b>118.95 284.0</b>	ANN ARBOR TOWER ★ <b>120.3 (CTAF) 0</b>	GND CON <b>121.6</b>	CLNC DEL <b>121.6</b>	UNICOM <b>123.0</b>
-----------------------	----------------------------------------	--------------------------------------------	-------------------------	--------------------------	------------------------



### DME or RADAR REQUIRED

3000	SVM	VGSI and descent angles not coincident (VGSI Angle 3.00/TCH 20).	SVM VORTAC	One Minute Holding Pattern
		DIXBO SVM RADAR		
	SVM 12.7	213°	2400	033° → 2700
		3.02°		← 213°
		TCH 55		
		4.7 NM	8 NM	
CATEGORY	A	B	C	D
S-24	1460-1	629 (700-1)	1460-1 <sup>3</sup> / <sub>4</sub> 629 (700-1 <sup>3</sup> / <sub>4</sub> )	1460-1 <sup>3</sup> / <sub>4</sub> 629 (700-1 <sup>3</sup> / <sub>4</sub> )
CIRCLING	1500-1	661 (700-1)	1500-1 <sup>3</sup> / <sub>4</sub> 661 (700-1 <sup>3</sup> / <sub>4</sub> )	1500-2 661 (700-2)

EC-1, 05 NOV 2020 to 03 DEC 2020

EC-1, 05 NOV 2020 to 03 DEC 2020