

| | | |
|--|------------------------|---|
| WAAS CH 63105 W36A | APP CRS 001° | Rwy Idg TDZE 1181 Apt Elev 1191 |
|--|------------------------|---|

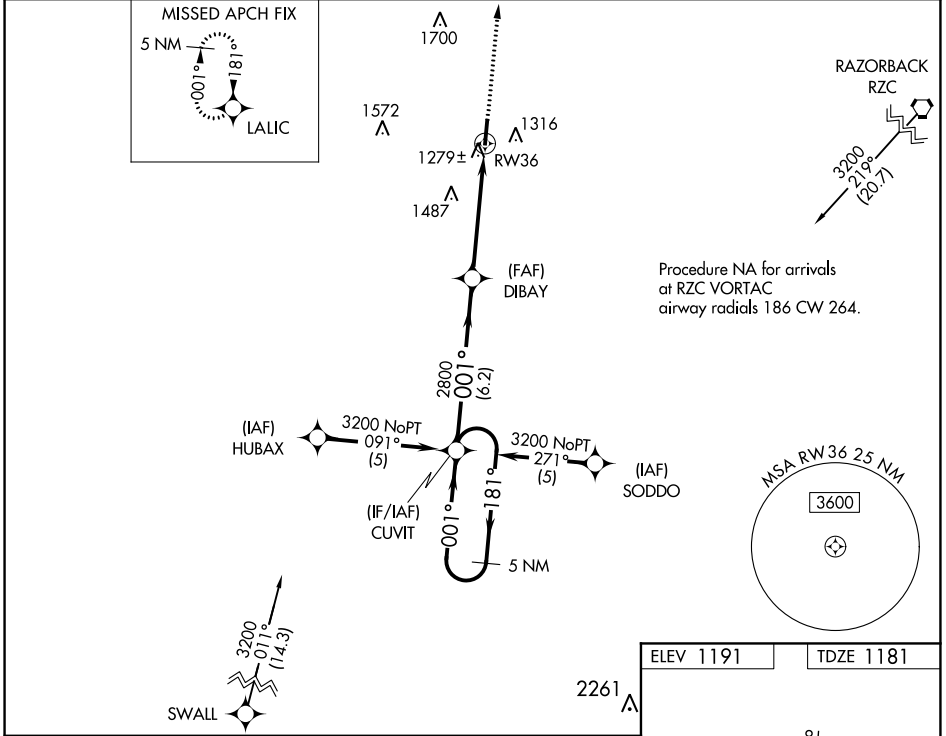
RNAV (GPS) RWY 36

SMITH FIELD (SLG)

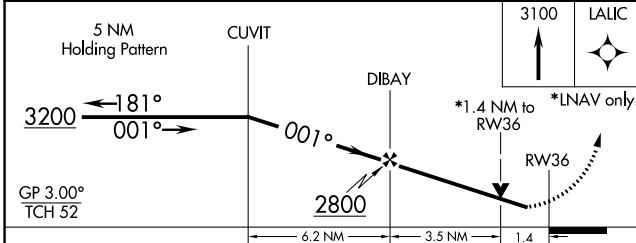
⚠ If local altimeter setting not received, use Northwest Arkansas National altimeter setting and increase all DAs/MDAs 40 feet. For uncompensated Baro-VNAV systems, LNAV/VNAV NA below -17°C (2°F) or above 46°C (114°F). DME/DME RNP-0.3 NA. Visibility reduction by helicopters NA. Baro-VNAV and VDP NA when using Northwest Arkansas National altimeter setting.

MISSED APPROACH:
Climb to 3100 direct LALIC and hold.

| | | |
|----------------------------|---|---------------------------------|
| AWOS-3PT 118.375 | RAZORBACK APP CON ★ 121.0 244.575 | UNICOM 122.8 (CTAF) ① |
|----------------------------|---|---------------------------------|



| | |
|-----------|-----------|
| ELEV 1191 | TDZE 1181 |
|-----------|-----------|



| CATEGORY | A | B | C | D |
|--------------|-----------------------|-----------------------|-------------------------|-------------------------|
| LPV DA | | 1431-1 | 250 (300-1) | |
| LNAV/VNAV DA | | 1549-1¼ | 368 (400-1¼) | |
| LNAV MDA | 1660-1 | 479 (500-1) | 1660-1¼ 479 (500-1¼) | 1660-1½ 479 (500-1½) |
| CIRCLING | 1660-1 469 (500-1) | 1720-1 529 (600-1) | 1720-1½ 529 (600-1½) | 1760-2 569 (600-2) |

