

VOR RWY 26R

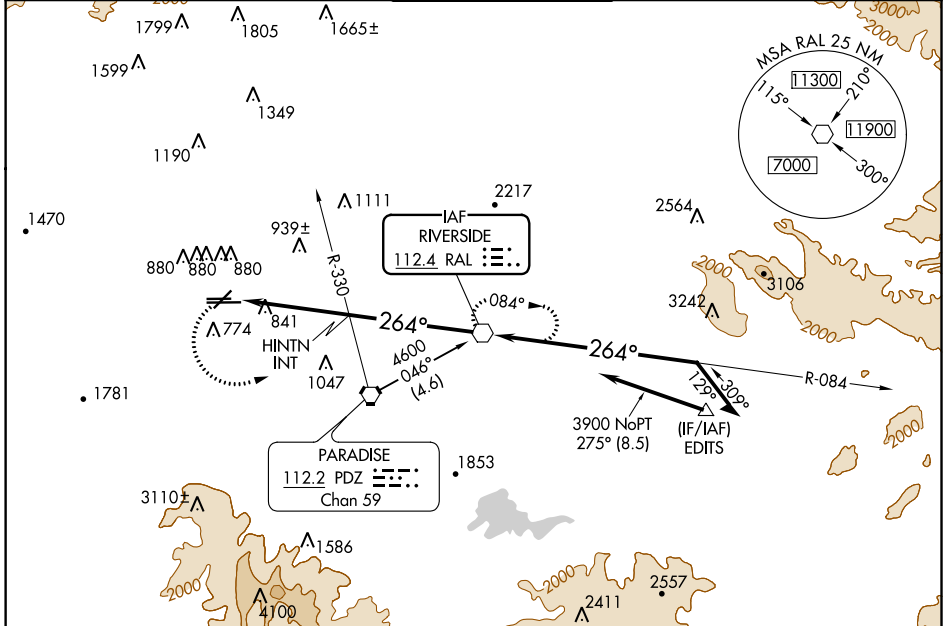
CHINO (CNO)

VOR RAL 112.4	APP CRS 264°	Rwy Idg 4858
		TDZE 636
		Apt Elev 650

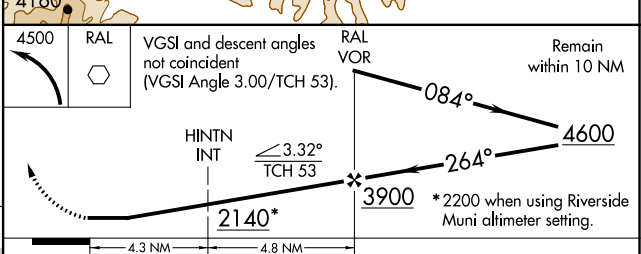
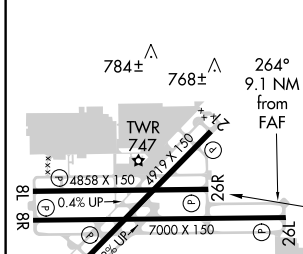
NA Visibility reduction by helicopters NA.
When local altimeter setting not received, use Riverside Muni altimeter setting and increase all MDA 60 feet, increase HINTN FIX minimums S-26R and circling Cat B, C, and D visibility 1/4 mile.

MISSED APPROACH: Climbing left turn to 4500 direct RAL VOR and hold, continue climb-in-hold to 4500.

ATIS 125.85	SOCAL APP CON 135.4 318.2	CHINO TOWER * 118.5 (CTAF)	GND CON 121.6	UNICOM 122.95
-----------------------	-------------------------------------	--------------------------------------	-------------------------	-------------------------



ELEV 650	TDZE 636
----------	----------



REIL Rwy 3 and 21
MIRL Rwy 3-21 and 8R-26L
HIRL Rwy 8L-26R

FAF to MAP 9.1 NM

Knots	60	90	120	150	180
Min:Sec	9:06	6:04	4:33	3:38	3:02

CATEGORY	A	B	C	D
S-26R	2140-1¼ 1504 (1500-1¼)	2140-1½ 1504 (1500-1½)	2140-3	1504 (1500-3)
CIRCLING	2140-1¼ 1490 (1500-1¼)	2140-1½ 1490 (1500-1½)	2140-3	1490 (1500-3)
HINTN FIX MINIMUMS				
S-26R	1320-1	684 (700-1)	1320-2 684 (700-2)	1320-2¼ 684 (700-2¼)
CIRCLING	1320-1	670 (700-1)	1320-2 670 (700-2)	1320-2¼ 670 (700-2¼)

SW-3, 05 NOV 2020 to 03 DEC 2020

SW-3, 05 NOV 2020 to 03 DEC 2020