

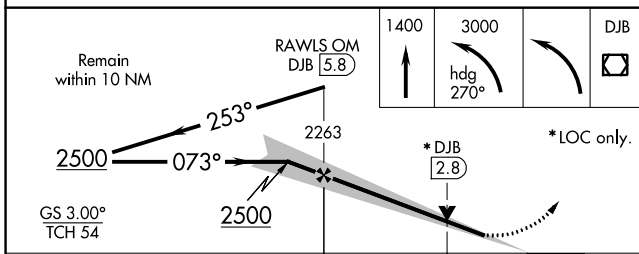
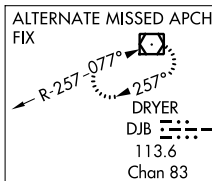
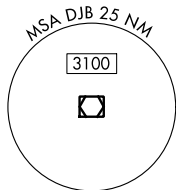
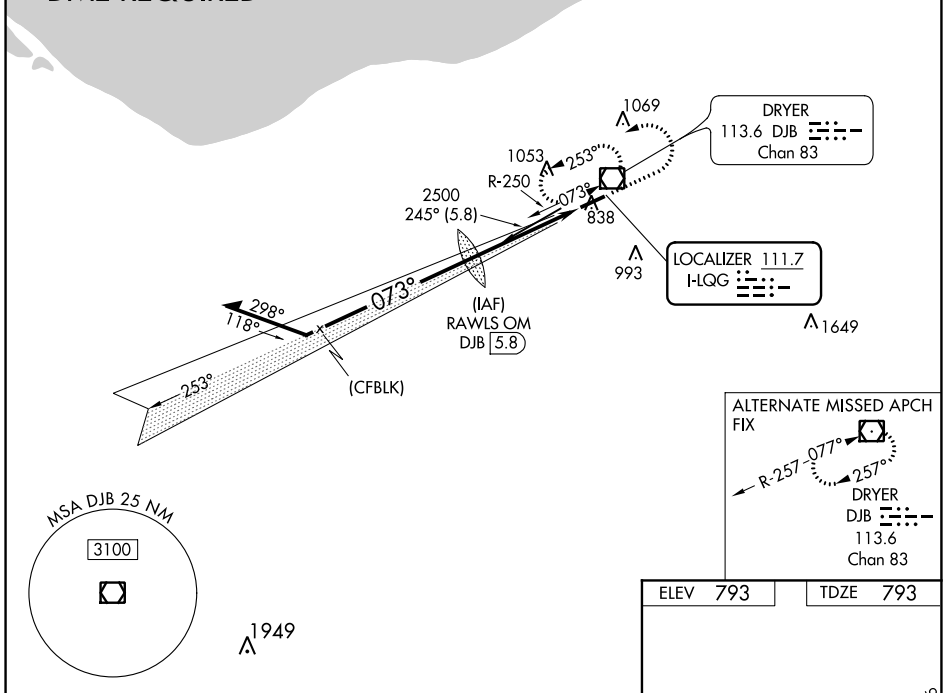
LOC I-LQG 111.7	APP CRS 073°	Rwy Idg 5002	TDZE 793
		Apt Elev 793	

ILS or LOC RWY 7
LORAIN COUNTY RGNL (LPR)

<p>▼ For inoperative MALSR, increase S-LOC 7 Cats C/D visibility to 1 3/8 mile. ▲ VDP NA with Cleveland-Hopkins Intl altimeter setting. When local altimeter setting not received, use Cleveland-Hopkins Intl altimeter setting and increase all DA 36 feet and all MDA 40 feet.</p>	<p>MALSR </p>	<p>MISSED APPROACH: Climb to 1400 then climbing left turn to 3000 on heading 270° then left turn direct DJB VOR/DME and hold.</p>
--	--------------------	---

ASOS 121.425	CLEVELAND APP CON 126.35 346.325	CLNC DEL 125.7	UNICOM 122.7 (CTAF) 0
------------------------	--	--------------------------	---------------------------------

DME REQUIRED



ELEV 793	TDZE 793
----------	----------

REIL Rwy 25 0	HIRL Rwy 7-25 0				
FAF to MAP 4.4 NM					
Knots	60	90	120	150	180
Min:Sec	4:24	2:56	2:12	1:46	1:28

CATEGORY	A	B	C	D
S-ILS 07		993-1/2	200 (200-1/2)	
S-LOC 07	1280-1/2	487 (500-1/2)	1280-1	487 (500-1)
CIRCLING	1280-1 487 (500-1)	1360-1 567 (600-1)	1420-1 3/4 627 (700-1 3/4)	1420-2 627 (700-2)

EC-2, 05 NOV 2020 to 03 DEC 2020

EC-2, 05 NOV 2020 to 03 DEC 2020