

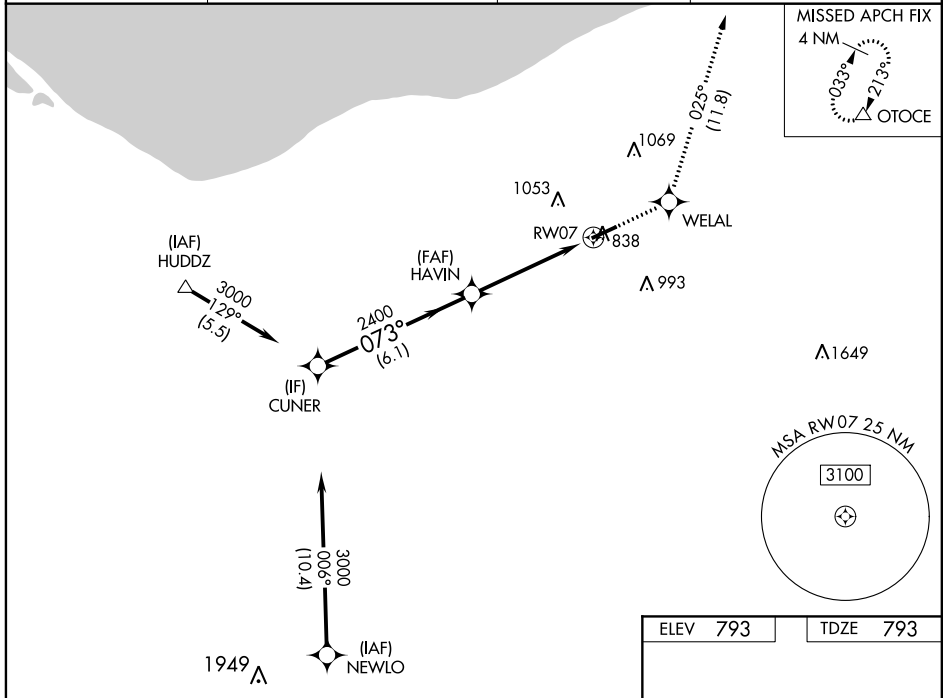
WAAS CH 99612 W07A	APP CRS 073°	Rwy Idg TDZE Apt Elev	5002 793 793
--	------------------------	-----------------------------	---

RNAV (GPS) RWY 7

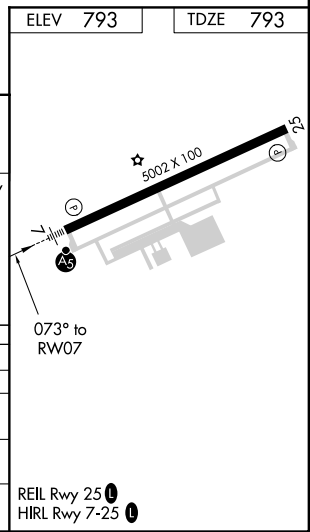
LORAIN COUNTY RGNL (L.P.R.)

RNP APCH.		MALSR	MISSED APPROACH: Climb to 3000 direct WELAL and on track 025° to OTOCE and hold.
For uncompensated Baro-VNAV systems, LNAV/VNAV NA below -16°C (4°F) or above 54°C (130°F).			

ASOS 121.425	CLEVELAND APP CON 126.35 346.325	CLNC DEL 125.7	UNICOM 122.7 (CTAF)
------------------------	--	--------------------------	-------------------------------



CUNER		HAVIN		RW07		WELAL		OTOCE	
3000		2400		2400		3000		tr 025°	
GP 3.00°		TCH 54		*1.5 NM to RW07		*RNAV only			
6.1 NM		3.3 NM		1.5 NM					
CATEGORY	A	B	C	D					
LPV DA	993-½		200 (200-½)						
LNAV/VNAV DA	1133-¾		340 (400-¾)						
LNAV MDA	1340-½ 547 (600-½)		1340-1 547 (600-1 ½)						
CIRCLING	1340-1 547 (600-1)	1360-1 567 (600-1)	1420-1 627 (700-1 ¾)	1420-2 627 (700-2)					



EC-2, 05 NOV 2020 to 03 DEC 2020

EC-2, 05 NOV 2020 to 03 DEC 2020