

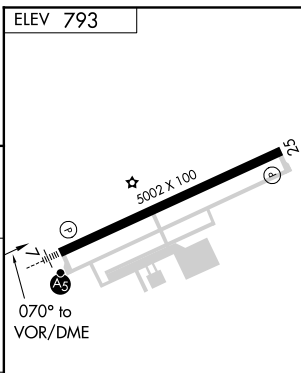
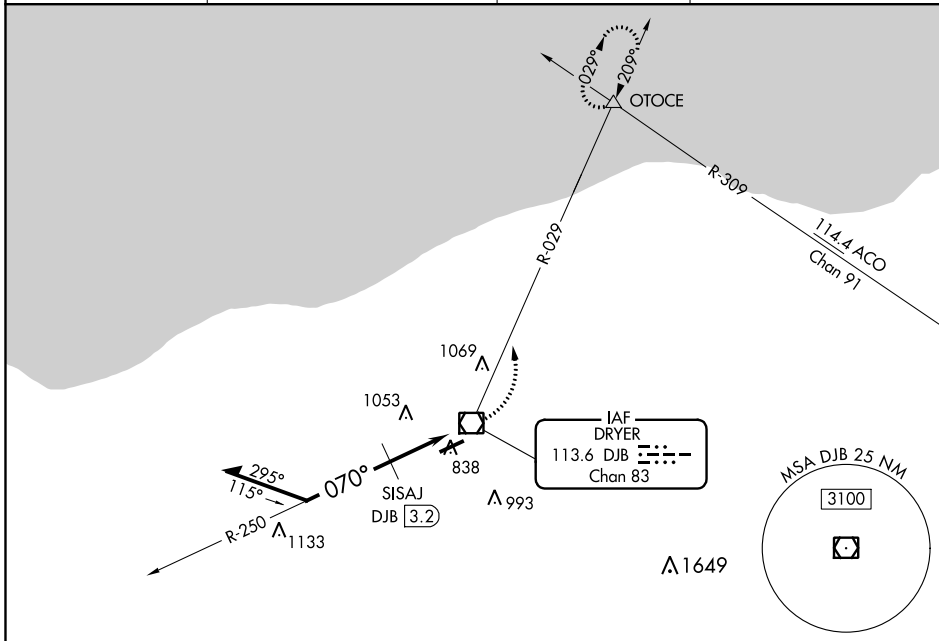
VOR/DME DJB 113.6 Chan 83	APP CRS 070°	Rwy Idg TDZE Apt Elev	N/A N/A 793
---	------------------------	-----------------------------	--

VOR-A
LORAIN COUNTY RGNL (LPR)

▼ When local altimeter setting not received, use Cleveland-Hopkins Intl altimeter setting and increase all MDA 40 feet, increase circling Cat C/D visibility ¼ mile.

MISSED APPROACH: Climbing left turn to 3000 via heading 029° and DJB VOR/DME R-029 direct OTOCE INT and hold.

ASOS 121.425	CLEVELAND APP CON 126.35 346.325	CLNC DEL 125.7	UNICOM 122.7 (CTAF) 0
------------------------	--	--------------------------	--



CATEGORY	A		B		C		D	
	1440-1	647 (700-1)	1440-1¾	647 (700-1¾)	1440-2	647 (700-2)		
C CIRCLING								
SISAJ DME MINIMUMS								
C CIRCLING	1300-1 507 (600-1)	1360-1 567 (600-1)	1420-1¾ 627 (700-1¾)	1420-2 627 (700-2)				

ELEV 793
REIL Rwy 25 0
HIRL Rwy 7-25 0

EC-2, 05 NOV 2020 to 03 DEC 2020

EC-2, 05 NOV 2020 to 03 DEC 2020