

LOC/DME I-TOI 108.9 Chan 26	APP CRS 074°	Rwy Idg TDZE Apt Elev 6197 389 397
---	------------------------	--

ILS or LOC RWY 7

TROY MUNI AT N KENNETH CAMPBELL FIELD (TOI)

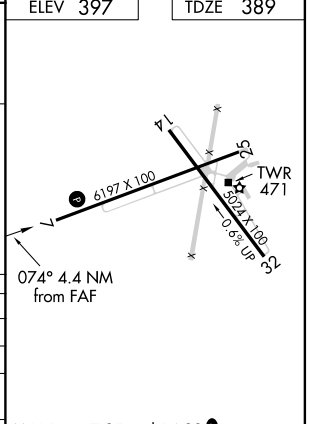
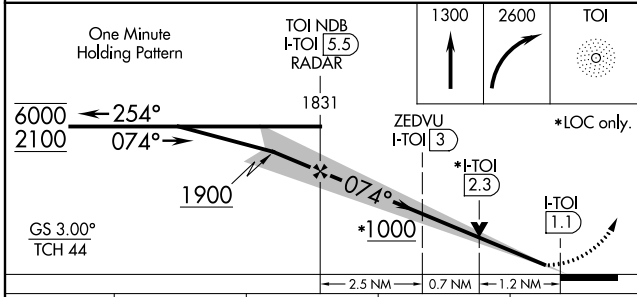
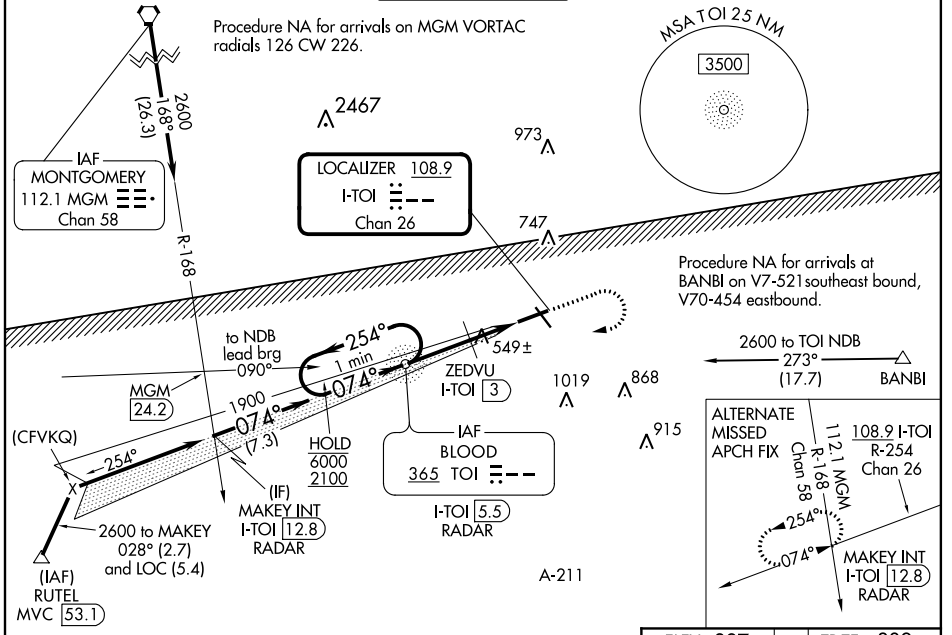
ADF required.

▲ Circling Rwy 14, 32 NA at night.

ASR/PAR

MISSED APPROACH: Climb to 1300 then climbing right turn to 2600 direct TOI NDB/I-TOI 5.5 DME/RADAR and hold.

ATIS 120.925	CAIRNS APP CON ★ 121.1 319.25	TROY TOWER ★ 124.3 (CTAF) 306.9	GND CON 121.9 294.7	UNICOM 122.8
------------------------	---	---	-------------------------------	------------------------



CATEGORY	A	B	C	D
S-ILS 7		635-7/8	246 (300-7/8)	
S-LOC 7	1000-1	611 (700-1)	1000-1 3/4	611 (700-1 3/4)
C CIRCLING	1000-1	603 (700-1)	1300-2 3/4 903 (1000-2 3/4)	1380-3 983 (1000-3)
ZEDVU FIX MINIMUMS (DME REQUIRED)				
S-LOC 7	800-1	411 (500-1)	800-1 1/2	411 (500-1 1/2)
C CIRCLING	1000-1	603 (700-1)	1300-2 3/4 903 (1000-2 3/4)	1380-3 983 (1000-3)

ELEV 397	TDZE 389
MIRL Rwy 7-25 and 14-32 ▲	
FAF to MAP 4.4 NM	
Knots	60 90 120 150 180
Min:Sec	4:24 2:56 2:12 1:46 1:28

ILS or LOC RWY 7

SE-4, 05 NOV 2020 to 03 DEC 2020

SE-4, 05 NOV 2020 to 03 DEC 2020