

WAAS CH 58212 W01A	APP CRS 009°	Rwy Idg 5000 TDZE 473 Apt Elev 473
--	------------------------	---

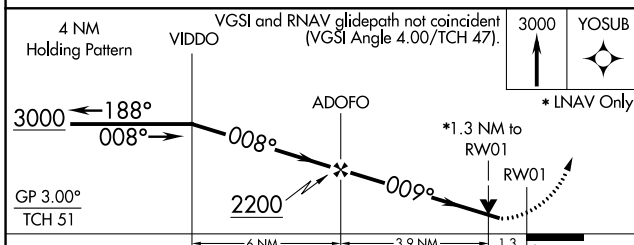
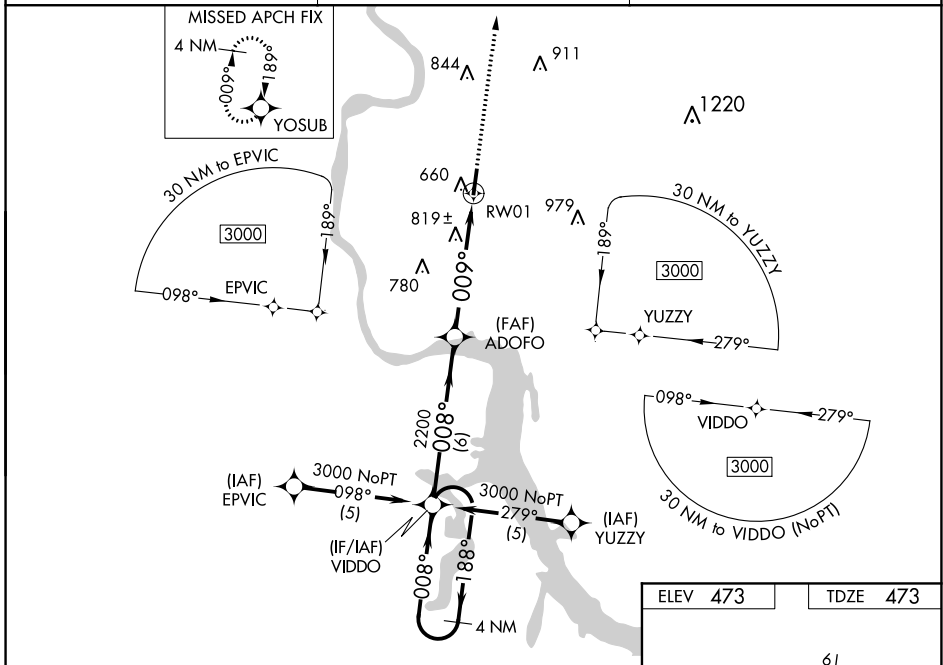
RNAV (GPS) RWY 1

SAVANNAH-HARDIN COUNTY (SNH)

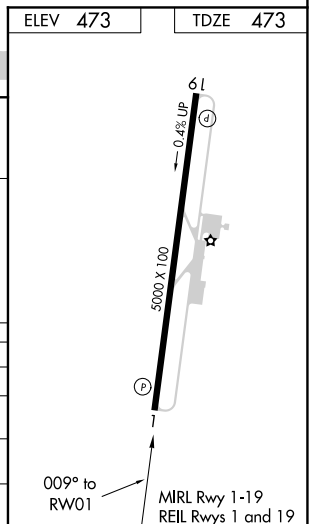
Baro-VNAV NA when using Muscle Shoals altimeter setting. For uncompensated Baro-VNAV systems, LNAV/VNAV NA below -15° C (5° F) or above 54° C (130° F). DME/DME RNP-0.3 NA. Visibility reduction by helicopters NA. When local altimeter setting not received, use Muscle Shoals, AL altimeter setting and increase all DA 102 feet and all MDA 120 feet and increase LPV and LNAV/VNAV all Cats. visibility ½ mile, LNAV Cat. C visibility ¼ mile, Circling Cat. B visibility ¼ mile and Circling Cat. C visibility ½ mile. VDP NA when using Muscle Shoals altimeter setting.

MISSED APPROACH: Climb to 3000 direct YOSUB and hold.

AWOS-3 133.925	MEMPHIS CENTER 124.35 239.3	UNICOM 122.8 (CTAF)
--------------------------	---------------------------------------	-------------------------------



CATEGORY	A	B	C	D
LPV DA	845-1¼	372 (400-1¼)		NA
LNAV/VNAV DA	1188-2½	715 (800-2½)		NA
LNAV MDA	1080-1	607 (700-1)	1080-1¾ 607 (700-1¾)	NA
CIRCLING	1100-1	627 (700-1)	1100-1¾ 627 (700-1¾)	NA



SE-1, 05 NOV 2020 to 03 DEC 2020

SE-1, 05 NOV 2020 to 03 DEC 2020