

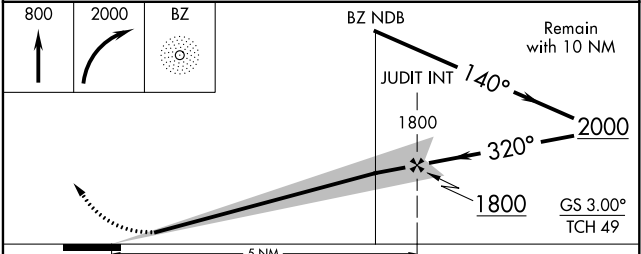
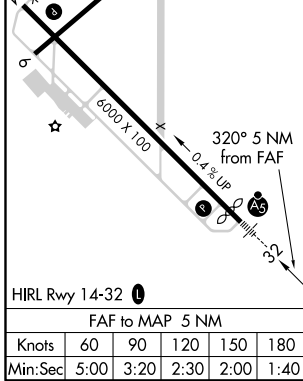
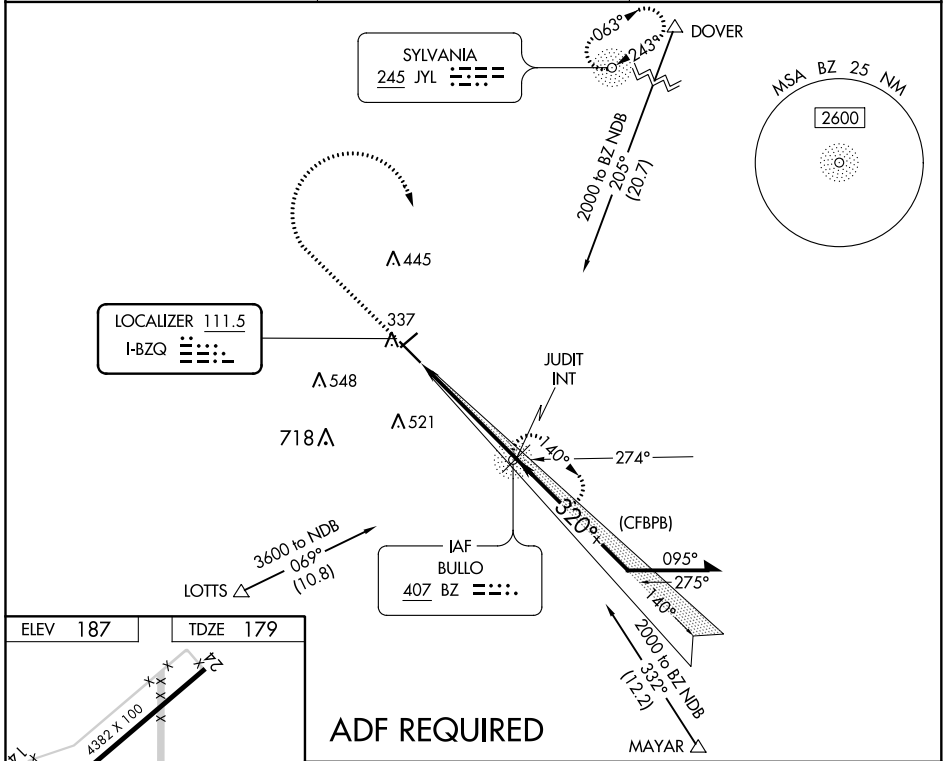
LOC I-BZQ <b>111.5</b>	APP CRS <b>320°</b>	Rwy Idg 5701
		TDZE 179
		Apt Elev 187

**ILS or LOC RWY 32**  
STATESBORO-BULLOCH COUNTY (TBR)

**⚠** Inop table does not apply to S-ILS 32. ADF required. When local altimeter setting not received, use Sylvania altimeter setting and increase all DA 28 feet and increase all MDA 40 feet, increase Circling Cat C visibility ¼ mile. Helicopter visibility reduction below ¾ SM NA.

**MALSR**  
 MISSED APPROACH: Climb to 800 then climbing right turn to 2000 direct BULLO NDB and hold.

AWOS-3 <b>119.025</b>	SAVANNAH APP CON ★ <b>118.4 354.0</b>	UNICOM <b>122.725 (CTAF) 0</b>
--------------------------	--	-----------------------------------



CATEGORY	A	B	C	D
S-ILS 32	433-¾ 254 (300-¾)			
S-LOC 32	640-¾ 461 (500-¾)	840-1 640-1	840-1¾ 860-2¼	461 (500-1)
<b>C</b> CIRCLING	640-1 453 (500-1)	840-1 653 (700-1)	840-1¾ 653 (700-1¾)	860-2¼ 673 (700-2¼)

SE-4, 05 NOV 2020 to 03 DEC 2020

SE-4, 05 NOV 2020 to 03 DEC 2020