

WAAS CH 81829 W32A	APP CRS 320°	Rwy Idg TDZE Apt Elev	5701 179 187
--	------------------------	-----------------------------	---

RNAV (GPS) RWY 32

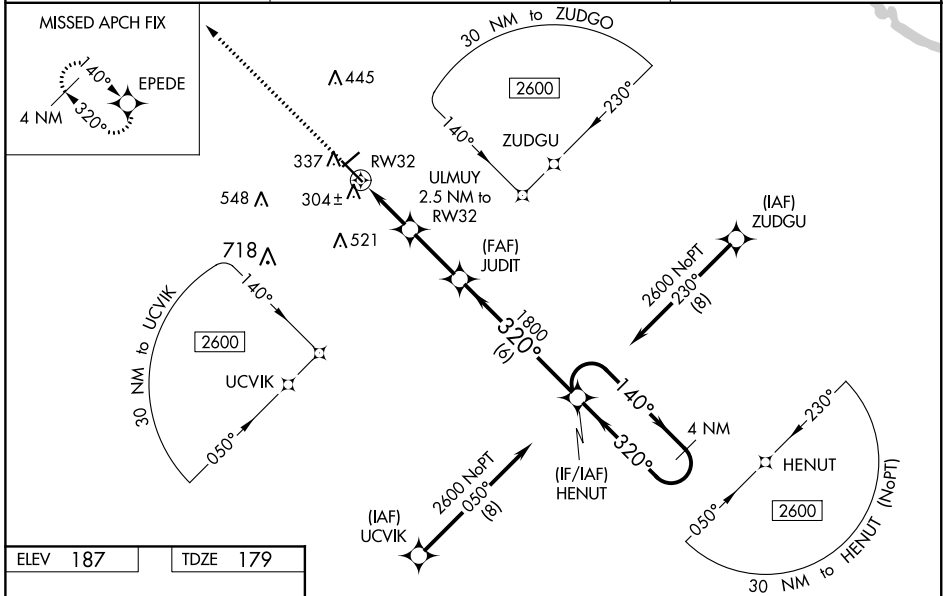
STATESBORO-BULLOCH COUNTY (TBR)

⚠ Inop table does not apply to LPV. For uncompensated Baro-VNAV systems, LNAV/VNAV NA below -15°C (5°F) or above 54°C (130°F). DME/DME RNP-0.3 NA. Helicopter visibility reduction below 3/4 SM NA. When local altimeter not received, use Sylvania altimeter setting and increase all DAs 28 feet and all MDAs 40 feet, increase LNAV/VNAV visibility all Cats and LNAV Cats C/D visibility 1/4 mile, and increase Circling Cat C visibility 1/4 mile. For inop MALSR, increase LNAV Cat A/B visibility to 1 mile, and Cat C/D visibility to 1 1/8 miles. For inop MALSR when using Sylvania altimeter setting, increase LNAV Cat A/B visibility to 1 mile. Baro-VNAV and VDP NA when using Sylvania altimeter setting.

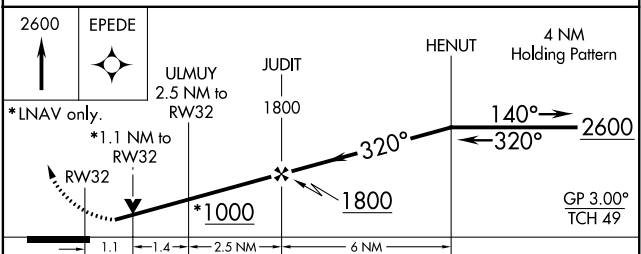
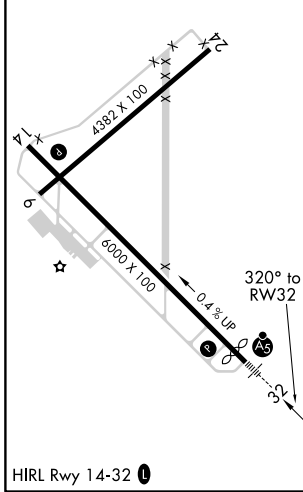
MALSR

MISSED APPROACH:
Climb to 2600 direct EPEDE and hold.

AWOS-3 119.025	SAVANNAH APP CON* 118.4 354.0	UNICOM 122.725 (CTAF) 0
---------------------------------	--	--



ELEV 187	TDZE 179
----------	----------



CATEGORY	A	B	C	D
LPV DA		432-3/4	253 (300-3/4)	
LNAV/VNAV DA		583-1	404 (400-1)	
LNAV MDA		560-3/4	381 (400-3/4)	
C CIRCLING	640-1 453 (500-1)	840-1 653 (700-1)	840-1 3/4 653 (700-1 3/4)	860-2 1/4 673 (700-2 1/4)

SE-4, 05 NOV 2020 to 03 DEC 2020

SE-4, 05 NOV 2020 to 03 DEC 2020