

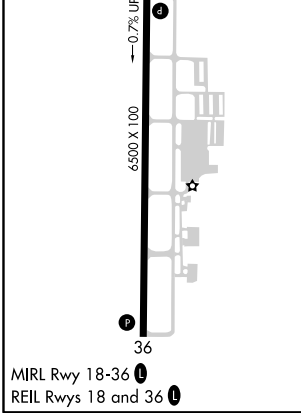
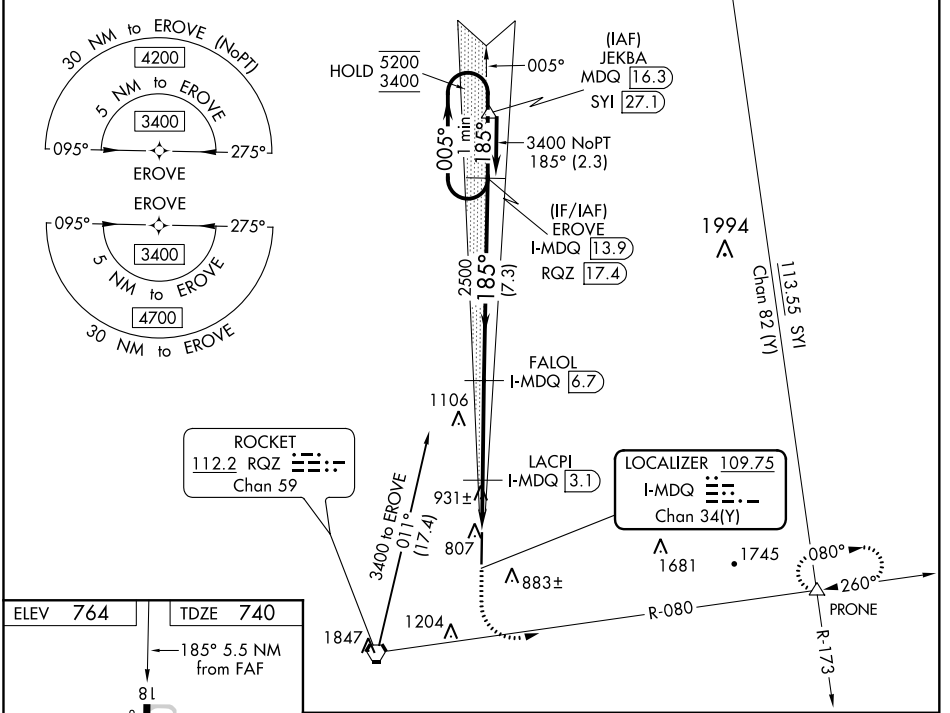
LOC/DME I-MDQ 109.75 Chan 34(Y)	APP CRS 185°	Rwy Idg TDZE Apt Elev	6500 740 764
--	------------------------	-----------------------------	---

ILS or LOC RWY 18

HUNTSVILLE EXECUTIVE TOM SHARP JR FIELD (MDQ)

DME or RNAV 1- GPS required.		MISSED APPROACH: Climb to 1200 then climbing left turn to 4000 on heading 120° and on RQZ VORTAC R-080 to PRONE INT and hold, continue climb-in-hold to 4000.	
<p>▼ Rwy 18 helicopter visibility reduction below 3/4 SM NA.</p>			

AWOS-3PT 120.0	HUNTSVILLE APP CON * 125.6 354.1	GCO 121.725	UNICOM 123.0 (CTAF) 0
--------------------------	--	-----------------------	---------------------------------



1200	4000	RQZ R-080	PRONE	EROVE I-MDQ [13.9]	One Minute Holding Pattern
hdg 120°				FALOL I-MDQ [6.7]	
*LOC only.	*I-MDQ [2.6]	LACPI I-MDQ [3.1]	2500	185°	5200
	I-MDQ [1.2]		*1360	185°	3400
	1.4	0.5 NM	3.6 NM	7.3 NM	GS 3.00° TCH 43
CATEGORY	A	B	C	D	
S-ILS 18	940-3/4		200 (200-3/4)		
S-LOC 18	1200-1		460 (500-1)		
CIRCLING	1260-1	496 (500-1)	1560-2 1/4 796 (800-2 1/4)	2000-3 1236 (1300-3)	

SE-4, 05 NOV 2020 to 03 DEC 2020

SE-4, 05 NOV 2020 to 03 DEC 2020