

LOC I-DSY 110.1 Chan 38	APP CRS 011°	Rwy Idg TDZE 253 Apt Elev 264
---	------------------------	---

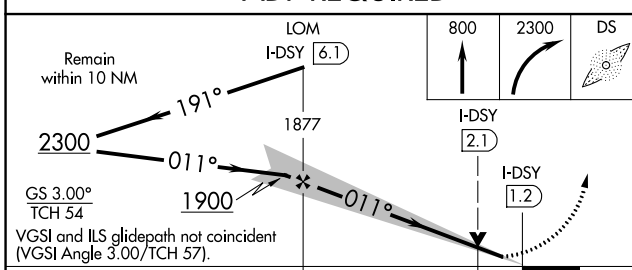
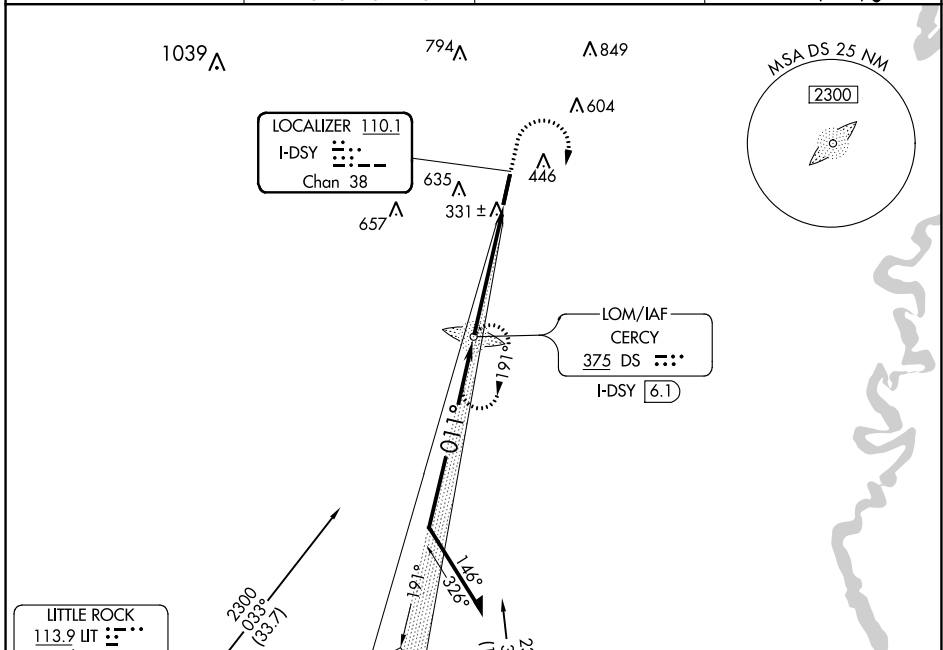
ILS or LOC RWY 1

SEARCY MUNI (SRC)

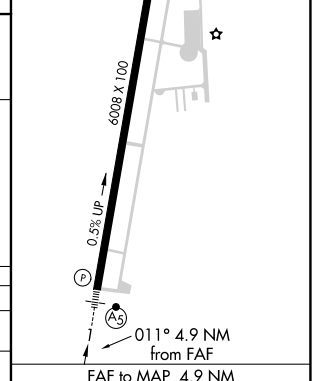
NA Circling NA for Cat C west of runway 1-19. If local altimeter setting not received, use Little Rock Bill and Hillary Clinton National/Adams Field altimeter setting and increase all DA/MDAs 100 feet. VDP NA with Little Rock Bill and Hillary Clinton National/Adams Field altimeter setting. ADF Required.

MALSR MISSED APPROACH: Climb to 800 then climbing right turn to 2300 direct CERCY LOM and hold.

AWOS-3PT 128.325	LITTLE ROCK APP CON 119.75 291.775	CLNC DEL 119.75	UNICOM 122.7 (CTAF)
----------------------------	--	---------------------------	-------------------------------



ELEV 264	61	TDZE 253
----------	----	----------



CATEGORY	A	B	C	D
S-ILS 1	453-½	200 (200-½)		NA
S-LOC 1	600-½	347 (400-½)		NA
CIRCLING	760-1	496 (500-1)	760-1½ 496 (500-1½)	NA

Knots	60	90	120	150	180
Min:Sec	4:54	3:16	2:27	1:58	1:38

SC-1, 05 NOV 2020 to 03 DEC 2020

SC-1, 05 NOV 2020 to 03 DEC 2020