

WAAS CH 81824 W01A	APP CRS 011°	Rwy Idg TDZE 253 Apt Elev 265	6008
--	------------------------	---	-------------

RNAV (GPS) RWY 1

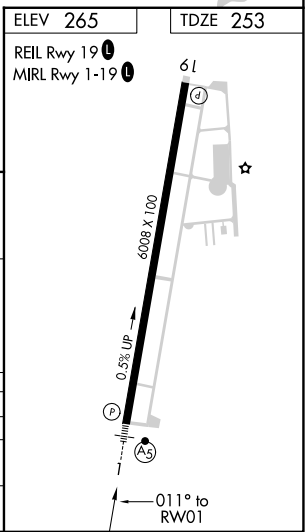
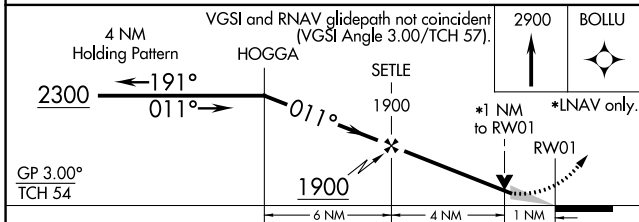
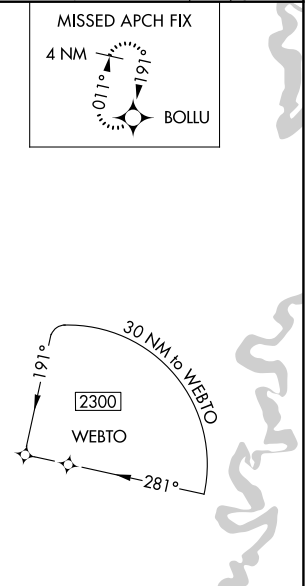
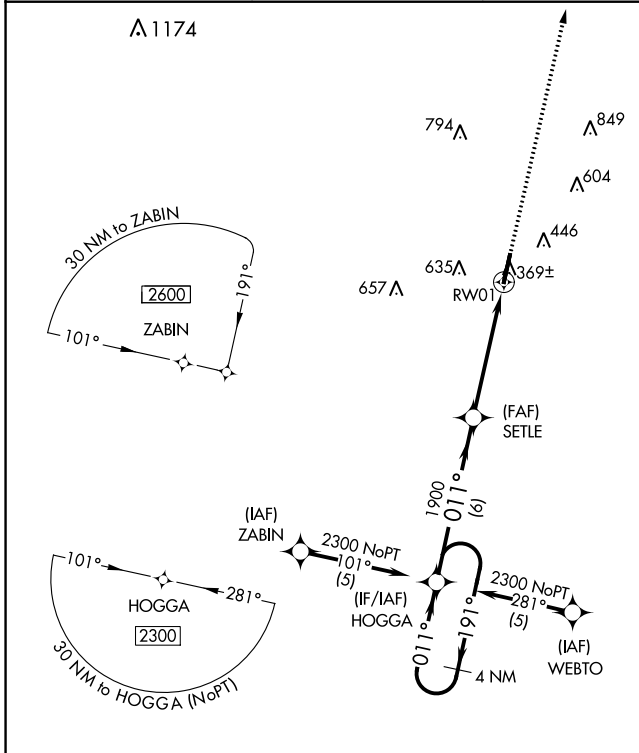
SEARCY MUNI (SRC)

⚠ Circling NA for Cat C west of Rwy 1-19. DME/DME RNP-0.3 NA. VDP NA with Little Rock Bill and Hillary Clinton National/Adams Field altimeter setting. When local altimeter setting not received, use Little Rock Bill and Hillary Clinton National/Adams Field altimeter setting and increase all DA 87 feet and all MDA 100 feet, increase LPV all Cats and LNAV Cat C visibility ¼ mile. For inoperative MALSRS, increase LPV all Cats visibility to 1 ¼ mile. For inoperative MALSRS, when using Little Rock Bill and Hillary Clinton National/Adams Field altimeter setting, increase LPV all Cats visibility to 1 ½ mile.

MALSRS

MISSED APPROACH:
Climb to 2900 direct BOLLU and hold.

AWOS-3PT 128.325	LITTLE ROCK APP CON 119.75 291.775	CLNC DEL 119.75	UNICOM 122.7 (CTAF)
----------------------------	--	---------------------------	-------------------------------



CATEGORY	A	B	C	D
LPV DA		573-¾	320 (400-¾)	NA
LNAV MDA		620-½	367 (400-½)	NA
CIRCLING	760-1	495 (500-1)	760-1½	495 (500-1½)

SC-1, 05 NOV 2020 to 03 DEC 2020

SC-1, 05 NOV 2020 to 03 DEC 2020