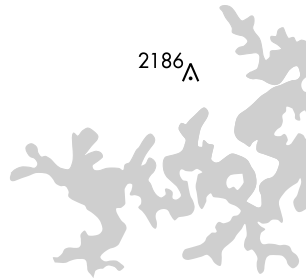
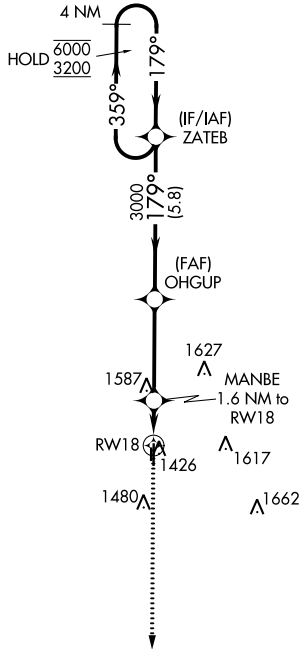
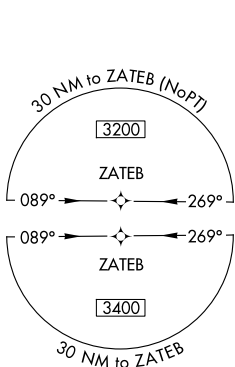


WAAS CH 77830 W18A	APP CRS 179°	Rwy Idg TDZE Apt Elev	4196 1298 1298
----------------------------------------	------------------------	-----------------------------	-------------------------------------------

RNAV (GPS) RWY 18

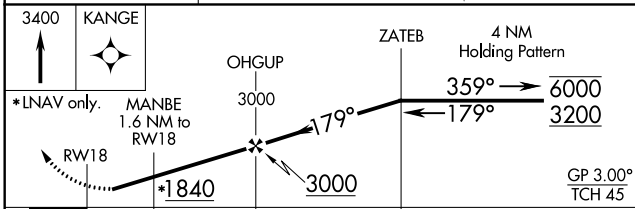
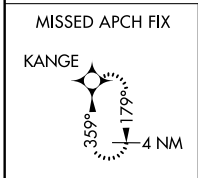
BENTONVILLE MUNI/LOUISE M THADEN FIELD (VBT)

RNP APCH.		MISSED APPROACH: Climb to 3400 direct KANGE and hold.	
<p>▼ Rwy 18 helicopter visibility reduction below 3/4 SM NA. For uncompensated Baro-VNAV systems, LNAV/VNAV NA below -17°C or above 54°C.</p>			
AWOS-3PT 134.975	RAZORBACK APP CON ★ 121.0 (WEST) 244.575	CLNC DEL 121.05 263.125	UNICOM 122.8 (CTAF) 0



SC-1, 05 NOV 2020 to 03 DEC 2020

SC-1, 05 NOV 2020 to 03 DEC 2020



ELEV 1298	TDZE 1298
<p>MIRL Rwy 18-36 0 REIL Rws 18 and 36</p>	

CATEGORY	A	B	C	D
LPV DA		1548-1	250 (300-1)	
LNAV/VNAV DA		1688-1 1/8	390 (400-1 1/8)	
LNAV MDA	1700-1	402 (500-1)	1700-1 1/8	402 (500-1 1/8)
CIRCLING	1780-1	482 (500-1)	1920-1 3/4 622 (700-1 3/4)	1940-2 642 (700-2)