

WAAS CH 93901 W36A	APP CRS 001°	Rwy Idg TDZE 296 Apt Elev 298	6502
--	------------------------	---	-------------

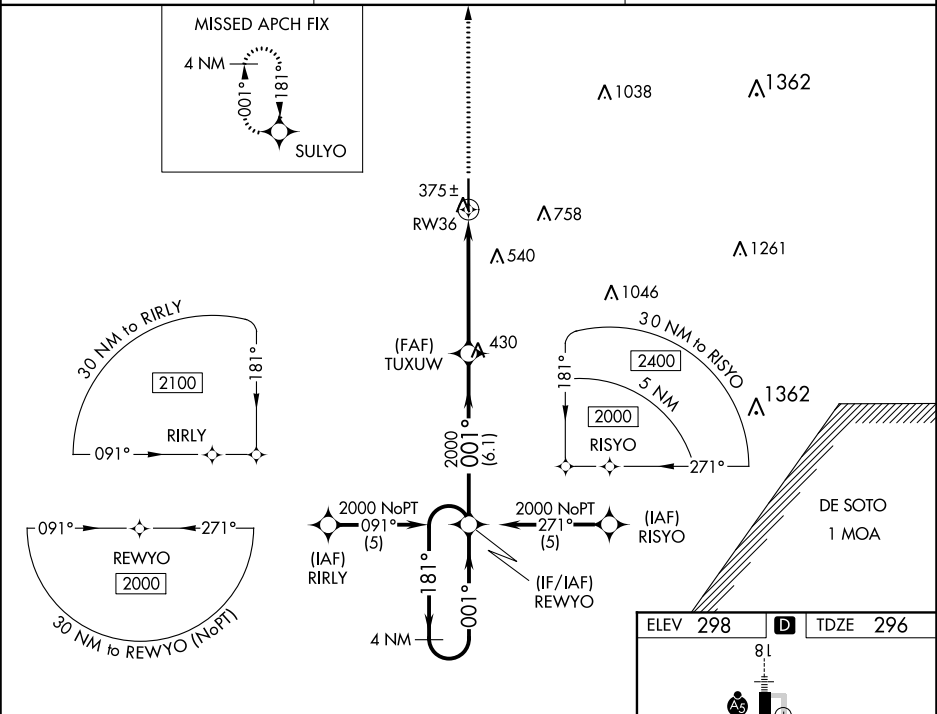
RNAV (GPS) RWY 36

HATTIESBURG-LAUREL RGNL (PIB)

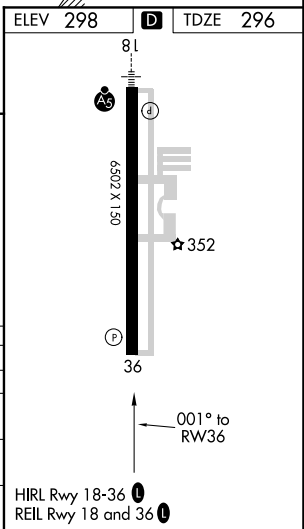
⚠ For uncompensated Baro-VNAV systems, LNAV/VNAV NA below -1.5°C (5°F) or above 48°C (118°F). DME/DME RNP-0.3 NA. Visibility reduction by helicopters NA. When local altimeter setting not received, use Hattiesburg Bobby L. Chain Muni altimeter setting and increase all DA 51 feet and increase all MDA 60 feet, and increase LNAV MDA Cat C and D visibility ¼ mile. Baro-VNAV NA when using Hattiesburg Bobby L. Chain Muni altimeter setting.

MISSED APPROACH:
Climb to 2100 direct SULYO and hold.

AWOS-3PT 128.325	HOUSTON CENTER 126.8 327.8	UNICOM 123.0 (CTAF) 1
----------------------------	--------------------------------------	---------------------------------



2100	SULYO	TUXUW	REWYO	4 NM Holding Pattern
↑	✦	✦	✦	✦
RW36		← 001°	← 001°	→ 181° → 2000
5.1 NM		6.1 NM		GP 3.00° TCH 45
CATEGORY	A	B	C	D
LPV DA	546-1		250 (300-1)	
LNAV/VNAV DA	625-1¼		329 (400-1¼)	
LNAV MDA	680-1		384 (400-1)	
CIRCLING	740-1 442 (500-1)	760-1 462 (500-1)	760-1½ 462 (500-1½)	860-2 562 (600-2)



SC-4, 05 NOV 2020 to 03 DEC 2020

SC-4, 05 NOV 2020 to 03 DEC 2020