

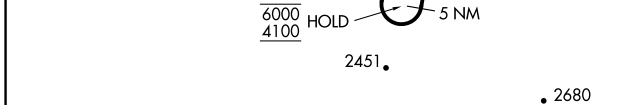
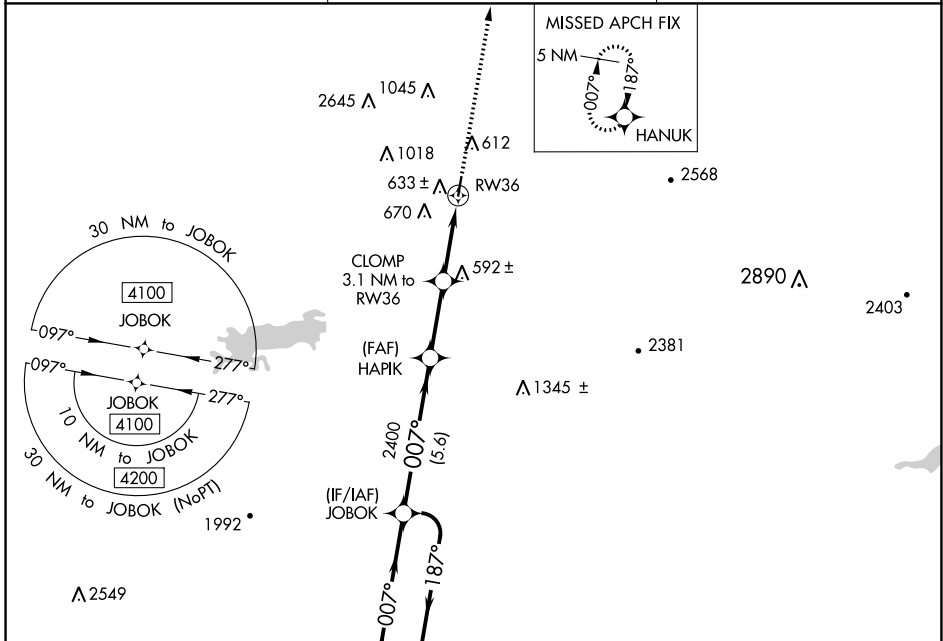
WAAS CH <b>61143</b> <b>W36A</b>	APP CRS <b>007°</b>	Rwy Idg TDZE Apt Elev	<b>4007</b> <b>451</b> <b>451</b>
--	------------------------	-----------------------------	---

# RNAV (GPS) RWY 36

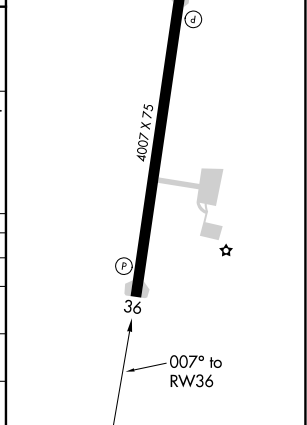
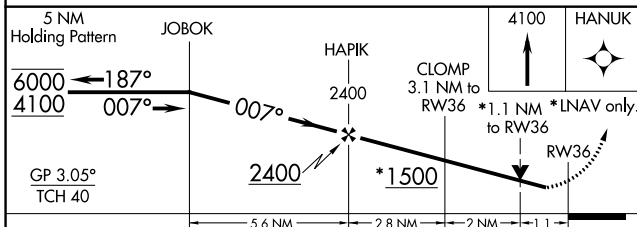
ROBERT S KERR (RKR)

RNP APCH.	MISSED APPROACH: Climb to 4100 direct HANUK and hold, continue to climb-in-hold to 4100.
<p>▼ Rwy 36 helicopter visibility reduction below 3/4 SM NA. For uncompensated Baro-VNAV systems, LNAV/VNAV NA below -15°C or above 54°C.</p> <p>▲ Circling NA for Cats C and D West of Rwy 18-36.</p>	

AWOS-3 <b>120.625</b>	RAZORBACK APP CON * <b>120.9 343.75</b>	UNICOM <b>122.8 (CTAF) ①</b>
--------------------------	--	---------------------------------



ELEV 451	TDZE 451
REIL Rwy 18 and 36 ①	MIRL Rwy 18-36 ①



CATEGORY	A	B	C	D
LPV DA		701-1	250 (300-1)	
LNAV/VNAV DA		786-1	335 (400-1)	
LNAV MDA	840-1	389 (400-1)	840-1 1/8	389 (400-1 1/8)
② CIRCLING	1000-1 549 (600-1)	1100-1 649 (700-1)	1100-1 3/4 649 (700-1 3/4)	1160-2 1/4 709 (800-1 1/4)

SC-1, 05 NOV 2020 to 03 DEC 2020

SC-1, 05 NOV 2020 to 03 DEC 2020