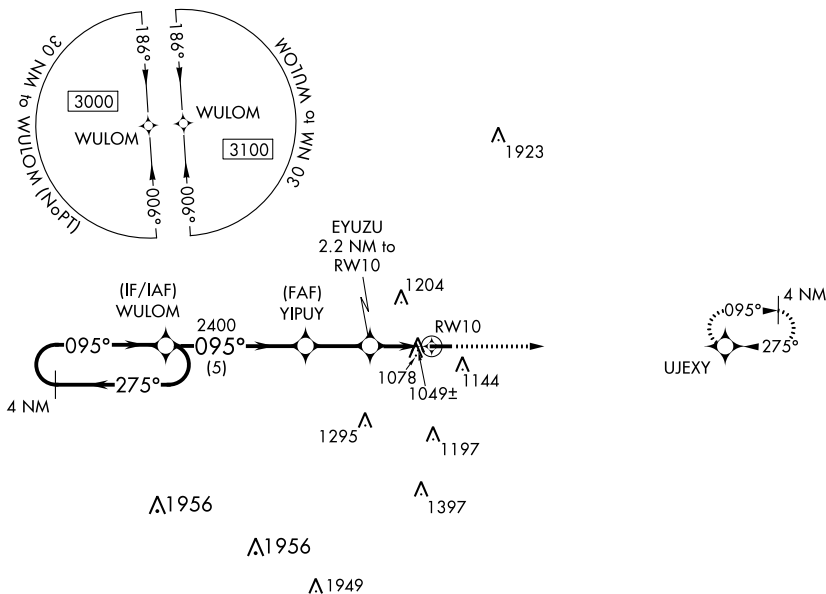


WAAS CH <b>61134</b> <b>W10A</b>	APP CRS <b>095°</b>	Rwy Idg TDZE Apt Elev	<b>4004</b> <b>920</b> <b>920</b>
--	------------------------	-----------------------------	---

# RNAV (GPS) RWY 10

MASON JEWETT FIELD (TEW)

RNP APCH.		MISSED APPROACH: Climb to 3000 direct UJEXY and hold.
<p><b>▼</b> Rwy 10 helicopter visibility reduction below 1 SM NA. Straight-in Rwy 10 NA at night, Circling Rwy 10 NA at night.</p> <p><b>▲</b></p>		
AWOS-3 <b>119.425</b>	GREAT LAKES APP CON ★ <b>118.65 226.4</b>	UNICOM <b>122.7 (CTAF) 0</b>



ELEV 920	TDZE 920
<p>MIRL Rwy 10-28 <b>0</b></p> <p>REIL Rwy 10 and 28 <b>0</b></p>	

4 NM Holding Pattern	Visual Segment - Obstacles.		3000	UJEXY
	WULOM	YIPUY	EYUZU 2.2 NM to RWY 10	RWY 10
	3000	2400	1660	
	5 NM		2.3 NM	2.2 NM
CATEGORY	A	B	C	D
LP MDA	1300-1	380 (400-1)		NA
LNAV MDA	1380-1	460 (500-1)		NA
CIRCLING	1500-1	580 (600-1)		NA

EC-1, 05 NOV 2020 to 03 DEC 2020

EC-1, 05 NOV 2020 to 03 DEC 2020