

| | | | |
|--|------------------------|-----------------------------|---------------------------------------|
| WAAS CH 99503 W27A | APP CRS 270° | Rwy Idg TDZE Apt Elev | 6500 17 17 |
|--|------------------------|-----------------------------|---------------------------------------|

RNAV (GPS) RWY 27

JACK EDWARDS NATIONAL (JKA)

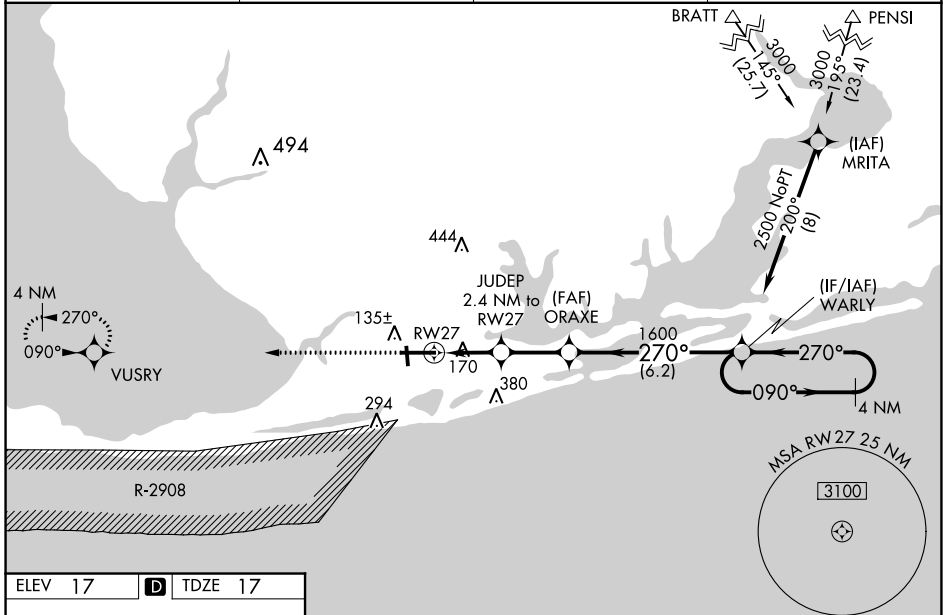
For uncompensated Baro-VNAV systems, LNAV/VNAV NA below -1.5°C (5°F) or above 54°C (130°F). Baro-VNAV and VDP NA when using Pensacola Intl altimeter setting. Circling Rwy 17, 35 NA at night. DME/DME RNP-0.3 NA. When local altimeter setting not received, use Pensacola Intl altimeter setting and increase LPV DA to 295 feet; increase LNAV/VNAV DA to 559 feet and all visibilities ¼ SM; increase all MDAs 80 feet and visibility Cats C and D ¼ SM. For inop ALS, increase LNAV Cat C/D visibility to 1½ SM. For inop ALS, when using Pensacola Intl altimeter setting minimums, increase LPV all Cats visibility to ¾ SM, increase LNAV Cats C/D visibility to 1½ SM.

MALSR

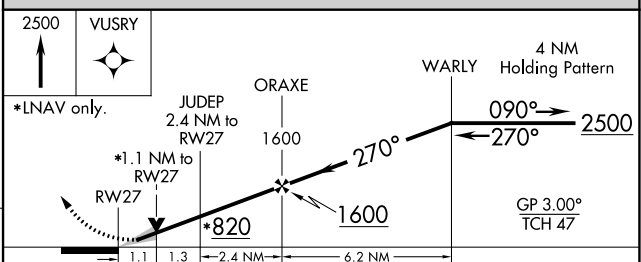
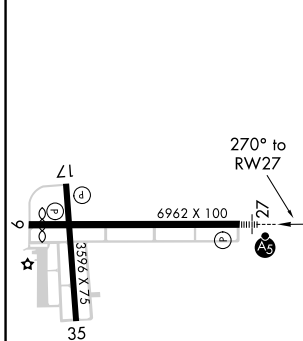


MISSED APPROACH:
Climb to 2500 direct
VUSRY and hold.

| | | | |
|----------------------------|--|---------------------------|-------------------------------|
| AWOS-3PT 134.525 | PENSACOLA APP CON 120.65 270.8 | CLNC DEL 124.55 | UNICOM 122.7 (CTAF) |
|----------------------------|--|---------------------------|-------------------------------|



| | | |
|---------|----------|---------|
| ELEV 17 | D | TDZE 17 |
|---------|----------|---------|



| CATEGORY | A | B | C | D |
|-------------------|-------|-------------|----------------------|------------------------|
| LPV DA | | 217-½ | 200 (200-½) | |
| LNAV/VNAV DA | | 481-1⅛ | 464 (500-1⅛) | |
| LNAV MDA | 420-½ | 403 (500-½) | 420-¾ | 403 (500-¾) |
| C CIRCLING | 480-1 | 463 (500-1) | 740-2 723 (800-2) | 740-2¼ 723 (800-2¼) |

SE-4, 05 NOV 2020 to 03 DEC 2020

SE-4, 05 NOV 2020 to 03 DEC 2020