

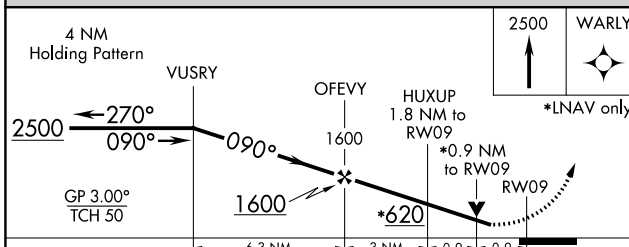
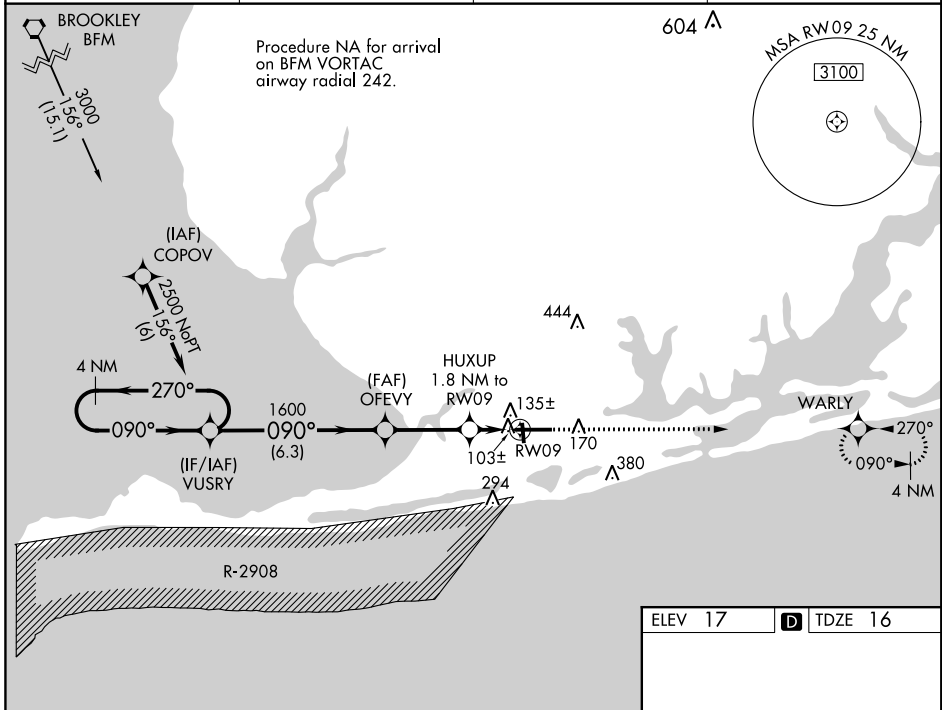
WAAS CH 86503 W09A	APP CRS 090°	Rwy Idg TDZE Apt Elev	6500 16 17
--	------------------------	-----------------------------	---------------------------------------

RNAV (GPS) RWY 9

JACK EDWARDS NATIONAL (JKA)

For uncompensated Baro-VNAV systems, LNAV/VNAV NA below -15°C (5°F) or above 54°C (130°F).
▼ Baro-VNAV and VDP NA when using Pensacola Intl altimeter setting. Circling Rwy 17, 35 NA at night. Rwy 9 helicopter visibility reduction below 3/4 SM NA. DME/DME RNP-0.3 NA. When local altimeter setting not received, use Pensacola Intl altimeter setting and increase LPV DA to 388 feet, LNAV/VNAV DA to 362 feet, and all visibilities 1/2 SM; increase all MDAs 80 feet and visibility Cats C and D 1/4 SM.
▲ MISSED APPROACH: Climb to 2500 direct WARLY and hold.

AWOS-3PT 134.525	PENSACOLA APP CON 120.65 270.8	CLNC DEL 124.55	UNICOM 122.7 (CTAF) 0
----------------------------	--	---------------------------	---------------------------------



ELEV 17	TDZE 16
MIRL Rwy 17-35 \bullet	
HIRL Rwy 9-27 \bullet	

CATEGORY	A	B	C	D
LPV DA		310-1	294 (300-1)	
LNAV/VNAV DA		284-7/8	268 (300-7/8)	
LNAV MDA		360-1	344 (400-1)	
C CIRCLING	480-1	463 (500-1)	740-2 723 (800-2)	740-2 1/4 723 (800-2 1/4)

SE-4, 05 NOV 2020 to 03 DEC 2020

SE-4, 05 NOV 2020 to 03 DEC 2020