

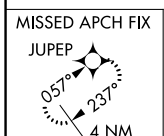
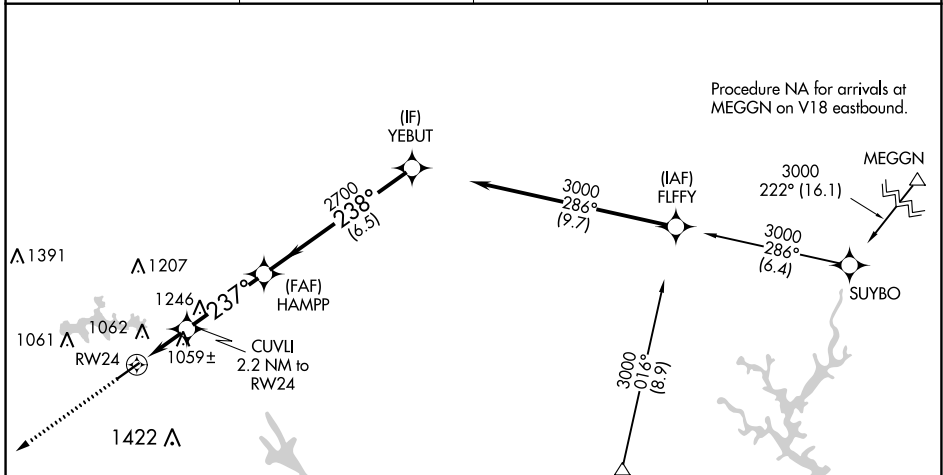
APP CRS	Rwy Idg	5010
237°	TDZE	882
	Apt Elev	882

RNAV (GPS) RWY 24

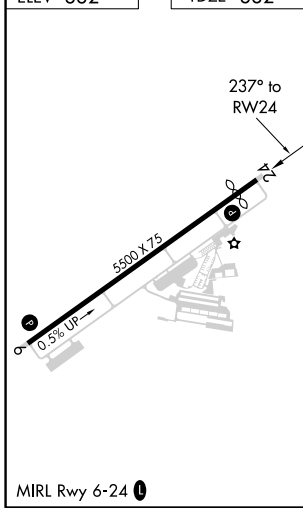
HENRY COUNTY (HMP)

RNP APCH.		MISSED APPROACH: Climb to 3000 direct JUPEP and hold.
	Rwy 24 helicopter visibility reduction below 3/4 SM NA. VDP NA when using Hartsfield-Jackson Atlanta Intl altimeter setting. When local altimeter setting not received, use Hartsfield-Jackson Atlanta Intl altimeter setting and increase all MDA 60 feet; increase LNAV Cats C/D visibility 1/8 mile and Circling Cat D visibility 1/4 mile. Circling Rwy 6 NA at night.	

AWOS-3 124.825	ATLANTA APP CON 128.575 343.675	CLNC DEL 128.575 343.675	UNICOM 122.725 (CTAF)
--------------------------	---	------------------------------------	---------------------------------



ELEV 882	TDZE 882
-----------------	-----------------



3000 JUPEP CUVLI 2.2 NM to RW24 HAMPP 1620 $\leq 3.00^\circ$ TCH 44 1.3 NM 0.9 NM 3.4 NM 6.5 NM	MSA RW24 25 NM 3100			
	3000 YEBUT 3000			
CATEGORY	A	B	C	D
LNAV MDA	1320-1	438 (500-1)	1320-1 1/4	438 (500-1 1/4)
CIRCLING	1380-1	498 (500-1)	1700-2 1/2 818 (900-2 1/2)	1740-2 3/4 858 (900-2 3/4)

SE-4, 05 NOV 2020 to 03 DEC 2020

SE-4, 05 NOV 2020 to 03 DEC 2020