

APP CRS	Rwy Idg	<b>5500</b>
<b>057°</b>	TDZE	<b>861</b>
	Apt Elev	<b>882</b>

# RNAV (GPS) RWY 6

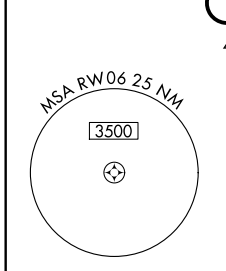
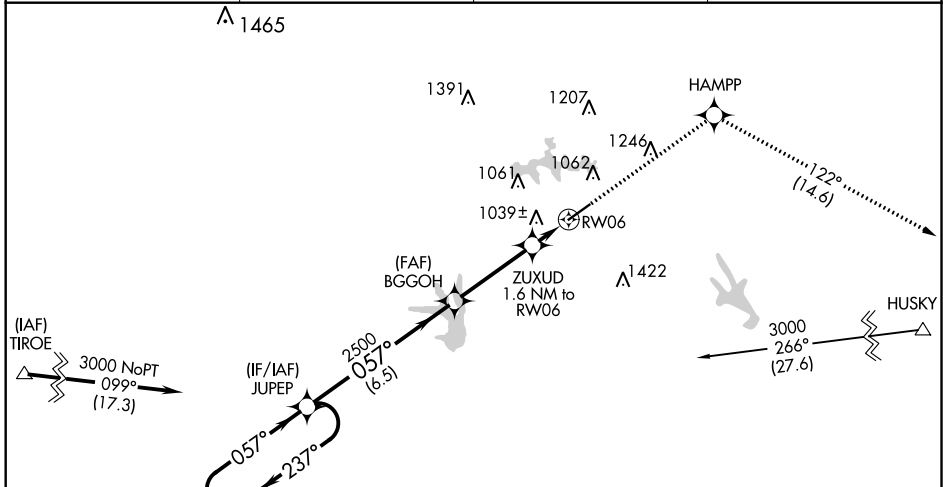
HENRY COUNTY (HMP)

RNP APCH.

**NA** When local altimeter setting not received, use Hartsfield-Jackson Atlanta Intl altimeter setting and increase all MDA 60 feet; increase LNAV Cats C/D visibility 1/8 mile and Circling Cat D visibility 1/4 mile. Straight-in Rwy 6 NA at night, Circling Rwy 6 NA at night. Rwy 6 helicopter visibility reduction below 1 SM NA.

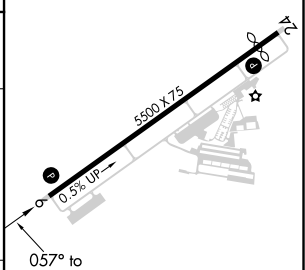
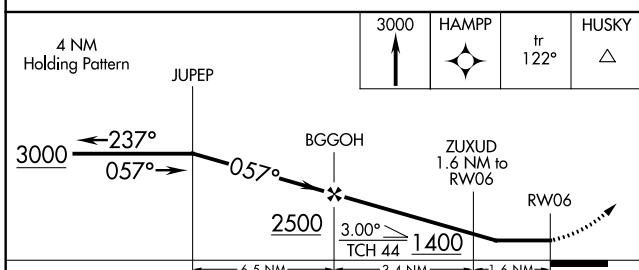
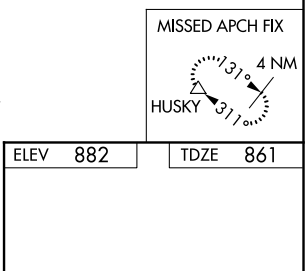
MISSED APPROACH: Climb to 3000 direct HAMPP and on track 122° to HUSKY and hold.

AWOS-3	ATLANTA APP CON	CLNC DEL	UNICOM
<b>124.825</b>	<b>128.575 343.675</b>	<b>128.575 343.675</b>	<b>122.725 (CTAF) 0</b>



Procedure NA for arrival at BOWLN on V97 southbound.

3000 NoPT (13.8) (IAF) BOWLN



CATEGORY	A	B	C	D
LNAV MDA	1300-1	439 (500-1)	1300-1 1/4	439 (500-1 1/4)
<b>CIRCLING</b>	1380-1	498 (500-1)	1700-2 1/2 818 (900-2 1/2)	1740-2 3/4 858 (900-2 3/4)

MIRL Rwy 6-24 0

SE-4, 05 NOV 2020 to 03 DEC 2020

SE-4, 05 NOV 2020 to 03 DEC 2020