

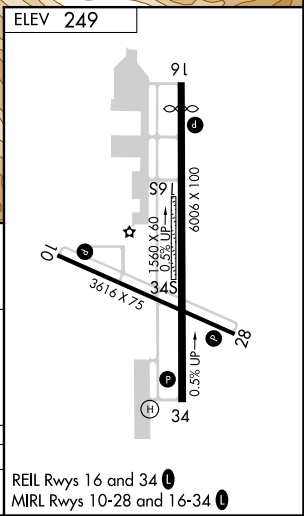
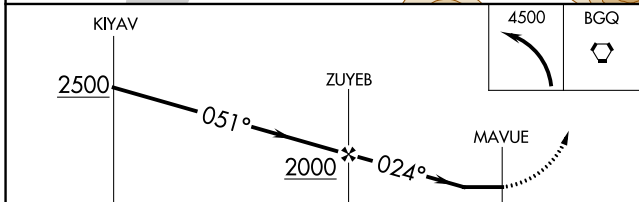
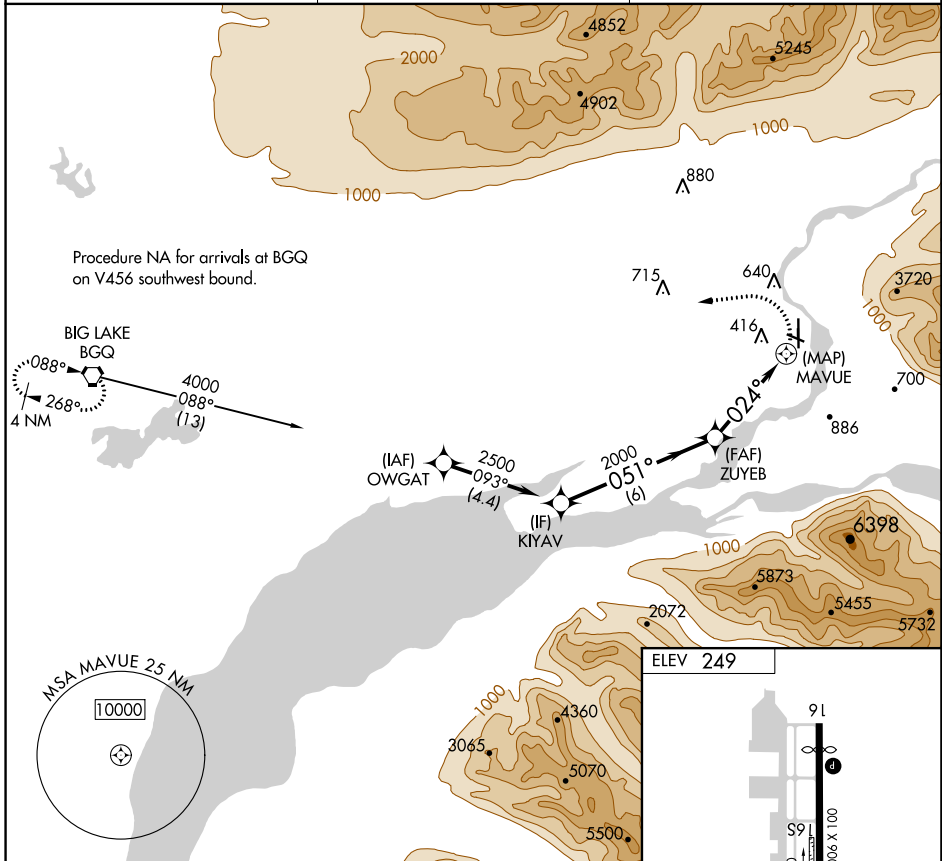
APP CRS 024°	Rwy Idg TDZE Apt Elev	N/A N/A 249
------------------------	-----------------------------	--

RNAV (GPS)-A

WARREN "BUD" WOODS PALMER MUNI (PAQ) (PAAQ)

RNP APCH.	MISSED APPROACH: Climbing left turn to 4500 direct BGQ VORTAC and hold.
Circling NA northeast of Rwy 16-28. Procedure NA at night.	

ASOS 134.75	ANCHORAGE APP CON 118.6 290.5	PALMER RADIO 123.6 (CTAF) 0 122.4
-----------------------	---	---



CATEGORY	A	B	C	D
CIRCLING	860-1¼ 611 (700-1¼)	940-1¼ 691 (700-1¼)	1300-3	1051 (1100-3)

RNAV (GPS)-A

AK, 05 NOV 2020 to 31 DEC 2020

AK, 05 NOV 2020 to 31 DEC 2020