

APP CRS 035°	Rwy Idg 4000
	TDZE 542
	Apt Elev 549

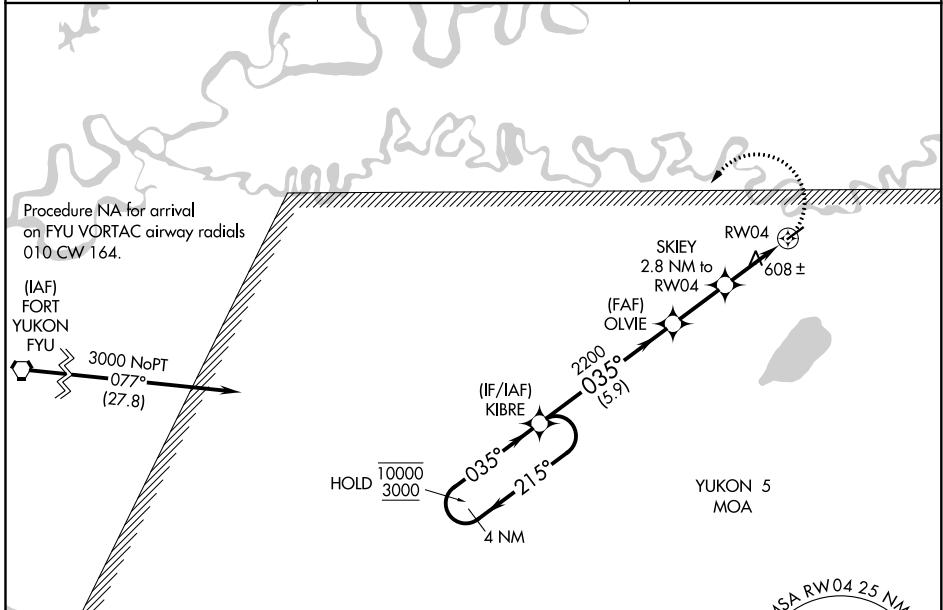
RNAV (GPS) RWY 4

CHALKYITSIK (CIK) (PACI)

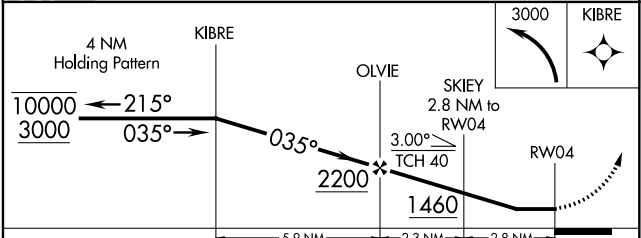
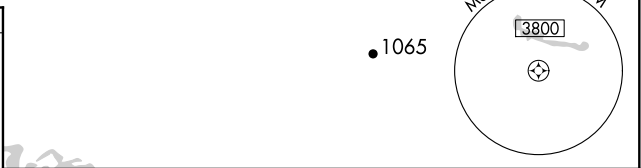
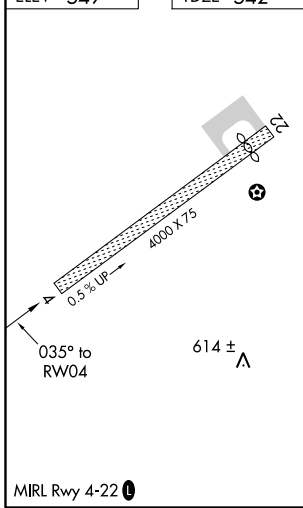
RNP APCH.
 Procedure NA at night.
 Rwy 4 helicopter visibility reduction below 1 SM NA.
 Use Fort Yukon altimeter setting.

MISSED APPROACH: Climbing left turn to 3000 direct KIBRE and hold.

FYU/PFYU AWOS-3P 125.8	ANCHORAGE CENTER 135.0 225.4	CTAF 122.9
----------------------------------	--	----------------------



ELEV 549	TDZE 542
----------	----------



CATEGORY	A	B	C	D
LNAV MDA	960-1	418 (500-1)	960-1½	418 (500-1½)
CIRCLING	1080-1 531 (600-1)	1160-1 611 (700-1)	1200-1¾ 651 (700-1¾)	1360-2¾ 811 (900-2¾)

AK, 05 NOV 2020 to 31 DEC 2020

AK, 05 NOV 2020 to 31 DEC 2020