

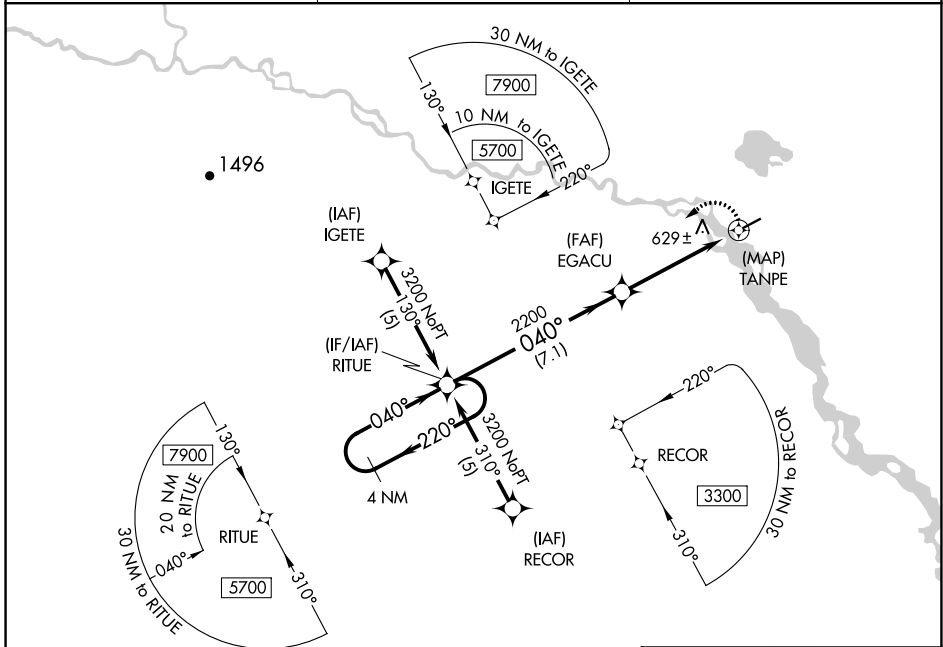
APP CRS 040°	Rwy Idg 4000
	TDZE 572
	Apt Elev 574

RNAV (GPS) RWY 4

VENETIE (VEE) (PAVE)

<p>▼ Use Fort Yukon altimeter setting; when not received procedure NA.</p> <p>▲ NA Procedure NA at night. DME/DME RNP-0.3 NA.</p> <p>✈ -42°C Helicopter visibility reduction below 1 SM NA.</p>	<p>MISSED APPROACH: Climbing left turn to 3200 direct RITUE and hold.</p>
--	---

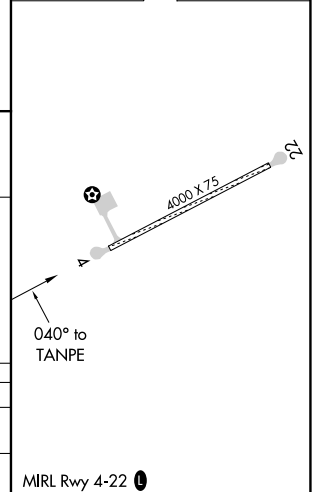
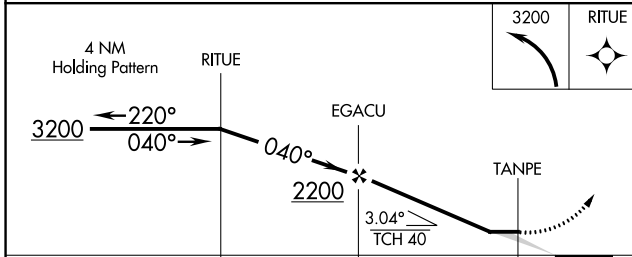
FYU/PFYU AWOS-3P 125.8	ANCHORAGE CENTER 135.0 284.7	CTAF 122.9
----------------------------------	--	----------------------



AK, 05 NOV 2020 to 31 DEC 2020

AK, 05 NOV 2020 to 31 DEC 2020

ELEV 574	TDZE 572
----------	----------



CATEGORY	A	B	C	D
LNVA MDA	1020-1	448 (500-1)		NA
CIRCLING	1200-1	626 (700-1)		NA