

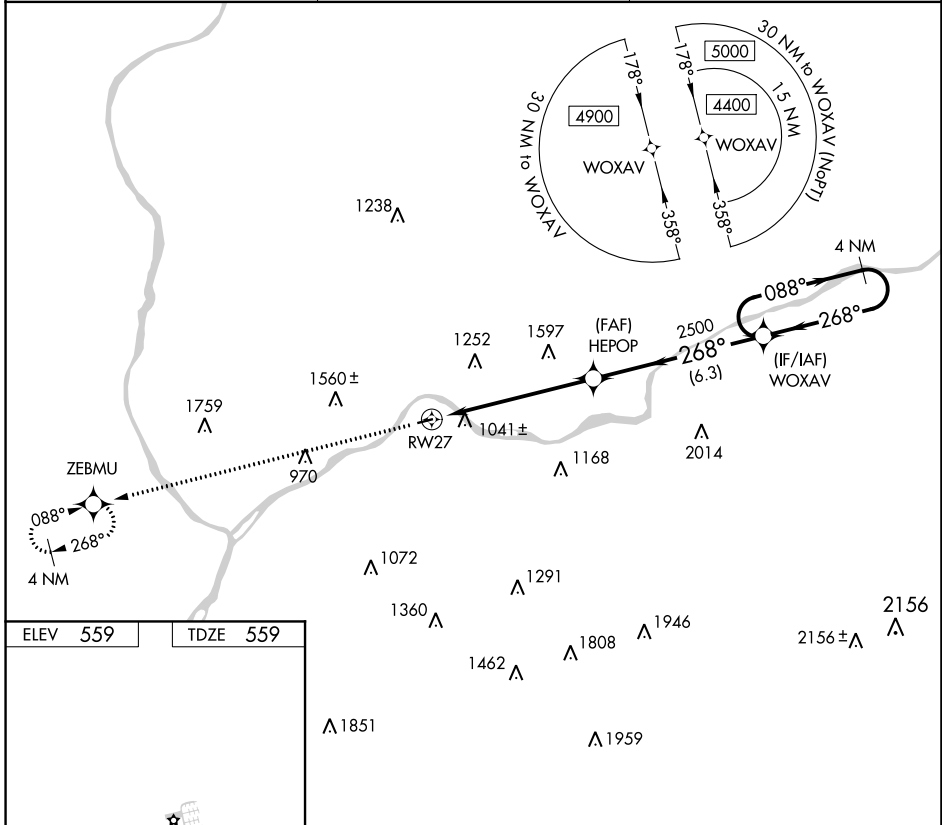
APP CRS	Rwy Idg	3000
268°	TDZE	559
	Apt Elev	559

RNAV (GPS) RWY 27

DANVILLE (8N8)

RNP APCH.	<p>▼ Use Penn Valley altimeter setting; when not received, procedure NA. ▲ NA Procedure NA at night. Rwy 27 helicopter visibility reduction below 1 SM NA.</p>	MISSED APPROACH: Climb to 4400 direct ZEBMU and hold, continue climb-in-hold 4400.
-----------	--	--

SEG ASOS 123.975	WILKES-BARRE APP CON 126.3 256.7	UNICOM 122.8 (CTAF) 0
----------------------------	--	---------------------------------



NE-4, 05 NOV 2020 to 03 DEC 2020

NE-4, 05 NOV 2020 to 03 DEC 2020

ELEV 559	TDZE 559	Visual Segment - Obstacles.		4 NM Holding Pattern
		4400 ZEBMU 2500 HEPOP 4400 WOXAV	088° → ← 268°	
CATEGORY	A	B	C	D
LNAV MDA	1540-1¼ 981 (1000-1¼)	1540-1½ 981 (1000-1½)	NA	