

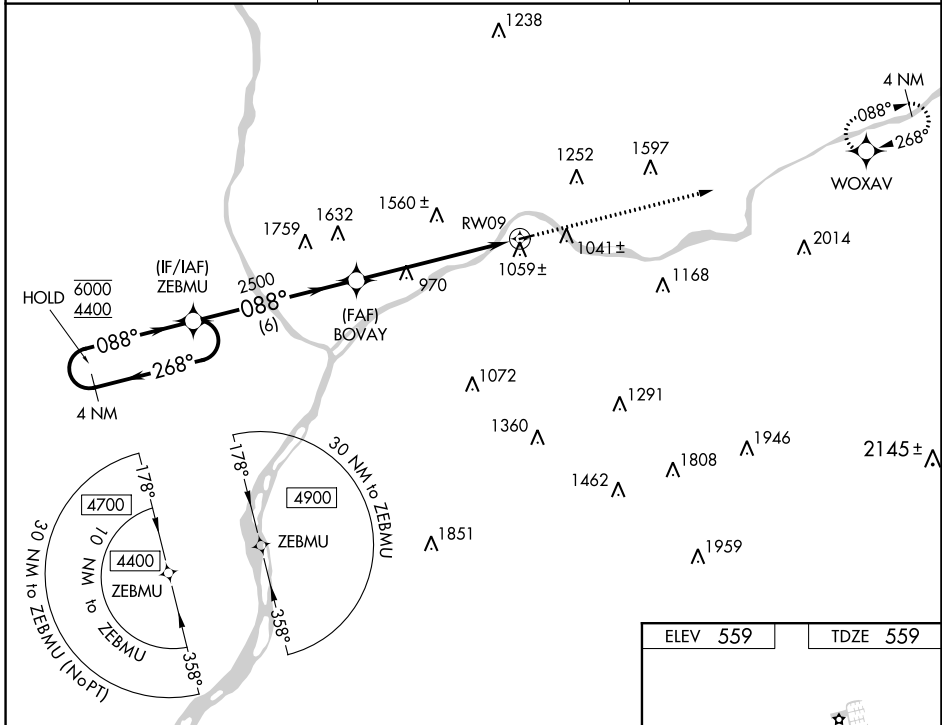
WAAS CH <b>65827</b> <b>W09A</b>	APP CRS <b>088°</b>	Rwy Idg TDZE Apt Elev	<b>3000</b> <b>559</b> <b>559</b>
--	------------------------	-----------------------------	---

# RNAV (GPS) RWY 9

DANVILLE (8N8)

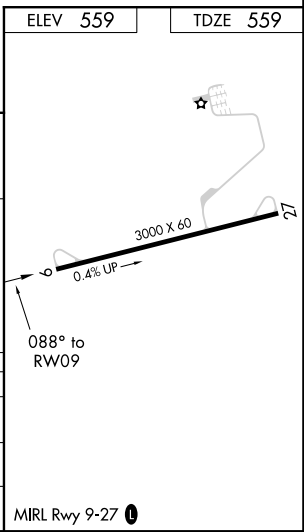
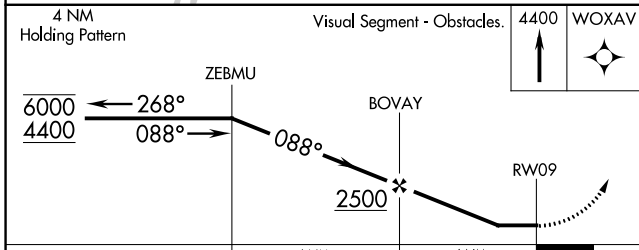
RNP APCH	<p>▼ Rwy 9 helicopter visibility reduction below 1 SM NA. ▲ NA Procedure NA at night. Use Penn Valley altimeter setting; when not received, procedure NA.</p>	MISSED APPROACH: Climb to 4400 direct WOXAV and hold, continue climb-in-hold to 4400.
----------	---	---

SEG ASOS <b>123.975</b>	WILKES-BARRE APP CON <b>126.3 256.7</b>	UNICOM <b>122.8 (CTAF) 0</b>
----------------------------	--	---------------------------------



NE-4, 05 NOV 2020 to 03 DEC 2020

NE-4, 05 NOV 2020 to 03 DEC 2020



CATEGORY	A	B	C	D
LP MDA	1280-1¼ 721 (800-1¼)	1280-1½ 721 (800-1½)		NA
LN AV MDA	1360-1¼ 801 (900-1¼)	1360-1½ 801 (900-1½)		NA
CIRCLING	1480-1¼ 921 (1000-1¼)	1760-1½ 1201 (1300-1½)		NA