

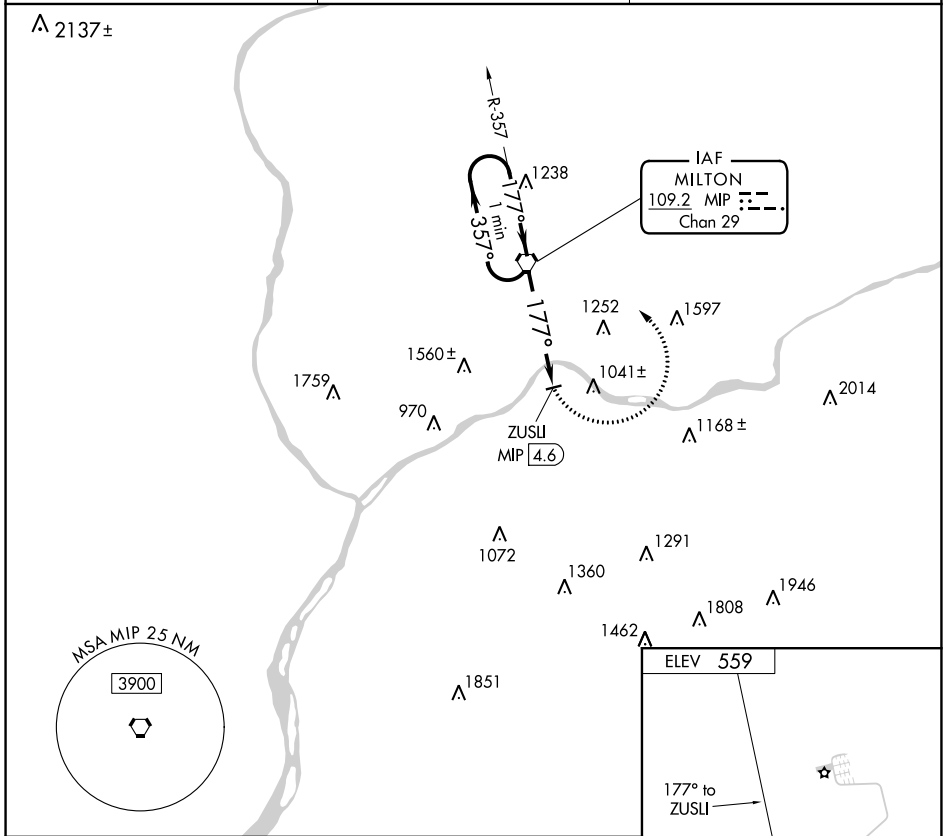
VORTAC MIP 109.2 Chan 29	APP CRS 177°	Rwy ldg TDZE Apt Elev N/A N/A 559
--	------------------------	---

VOR-A
DANVILLE (8N8)

▽ Use Penn Valley altimeter setting, when not received, procedure NA.
△ NA Procedure NA at night.
 Helicopter visibility reduction below 1 SM NA.

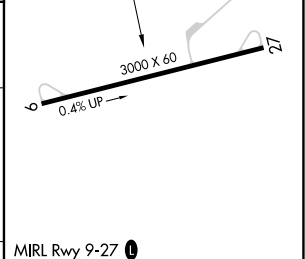
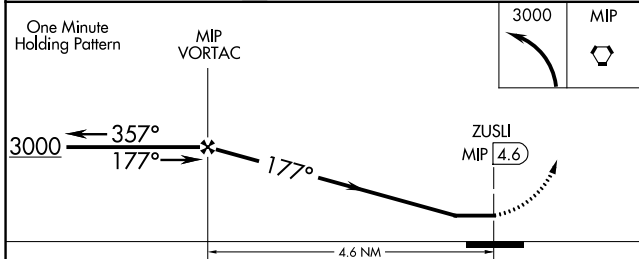
MISSED APPROACH: Climbing left turn to 3000 direct MIP VORTAC and hold.

SEG ASOS 123.975	WILKES-BARRE APP CON 126.3 256.7	UNICOM 122.8 (CTAF) 0
----------------------------	--	---------------------------------



NE-4, 05 NOV 2020 to 03 DEC 2020

NE-4, 05 NOV 2020 to 03 DEC 2020



CATEGORY	A	B	C	D	MIRL Rwy 9-27 0	
	FAF to MAP 4.6 NM					
☐ CIRCLING	1660-1¼ 1101 (1200-1¼)	1760-1½ 1201 (1300-1½)	NA			
	Knots	60	90	120	150	180
	Min:Sec	4:36	3:04	2:18	1:50	1:32