

CONTINUED FROM PRECEDING PAGE

AIRSPACE: CLASS B See VFR Terminal Area Chart.

RADIO AIDS TO NAVIGATION: NOTAM FILE TEB.

TEREBORO (T) VORW/DME 108.4 TEB Chan 21 N40°50.92' W74°03.73' 218° 10.6 NM to fld. 3/11W.

DME unusable:

060°-080° byd 22 NM blo 2,500'

081°-120° blo 4,000'

121°-180° blo 3,000'

236°-246°

VOR unusable:

081°-120° blo 4,000'

121°-180° blo 3,000'

236°-246°

ILS/DME 110.75 I-EWR Chan 44(Y) Rwy 04L. Class IID. DME shared with ILS Rwy 22R.

ILS/DME 108.7 I-EZA Chan 24 Rwy 04R. Class IIIE. DME serves Rwy 04L and Rwy 22L. DME unusable byd 15 NM.

ILS/DME 109.15 I-GPR Chan 28(Y) Rwy 11. Glideslope unusable byd 5° right and left side of course and .7 NM (300' MSL) inbound. LOC unusable byd 25° left of course.

ILS/DME 108.7 I-LSQ Chan 24 Rwy 22L. Class IIE. LOC unusable byd 20° left of course.

ILS/DME 110.75 I-JNN Chan 44(Y) Rwy 22R. Class IT. AYRON OM is also used for Rwy 22L. DME shared with ILS Rwy 04L. Localizer unusable byd 20° left of course.



HELIPAD H1: H54X54 (ASPH) PERIMETER LGTS

HELIPORT REMARKS: Helipad H1 perimeter lgts. Brewster pad; H1 located on Twy Z5. Ops limits are D65.

OCEAN CITY MUNI (26N) 2 SW UTC-5(-4DT) N39°15.81' W74°36.45'

WASHINGTON
L-34G
IAP

6 NOTAM FILE MIV

RWY 06-24: H2972X60 (ASPH) S-12.5 MIRL

RWY 06: PAPI(P2R)—GA 3.5° TCH 36'.

RWY 24: PAPI(P2L)—GA 3.5° TCH 37'. Tree. Rgt tfc.

SERVICE: FUEL 100LL LGT ACTIVATE MIRL Rwy 06-24—CTAF.

AIRPORT REMARKS: Attended Jun-Sep 1300-0100Z†, winter 1300-2100Z†.

Birds on and invof arpt.

AIRPORT MANAGER: (609) 525-9222

WEATHER DATA SOURCES: AWOS-AV 119.775 (609) 398-0705.

COMMUNICATIONS: CTAF/UNICOM 122.7

Ⓡ ATLANTIC CITY APP/DEP CON 124.6

CLNC DEL 133.6

CLEARANCE DELIVERY PHONE: For CD ctc Washington ARTCC at 703-771-3587.

RADIO AIDS TO NAVIGATION: NOTAM FILE ACY.

ATLANTIC CITY (L) VORTACW 108.6 ACY Chan 23 N39°27.35'

W74°34.58' 197° 11.6 NM to fld. 67/10W.

VORTAC unusable:

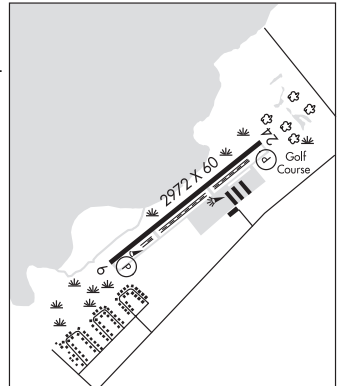
290°-300° byd 10 NM blo 4,000'

VOR portion unusable:

301°-355° byd 35 NM blo 2,000'

CEDAR LAKE (L) VORW/DME 115.2 VCN Chan 99 N39°32.26'

W74°58.03' 144° 23.5 NM to fld. 120/10W. NOTAM FILE MIV.



OCEAN CO (See TOMS RIVER on page 176)