

PORTLAND INTL JETPORT (PWM)(KPWM) 2 W UTC-5(-4DT) N43°38.74' W70°18.52'

NEW YORK
H-11D, L-32H
IAP, AD

76 B LRA Class I, ARFF Index B NOTAM FILE PWM MON Airport

RWY 11-29: H7200X150 (ASPH-GRVD) S-75, D-169, 2S-175,
2D-300 PCN 96 F/C/X/T HIRL CL 0.5% up W
RWY 11: ALSF2. TDZL. PAPI(P4R)—GA 3.0° TCH 52'. RVR-TMR
Trees.

RWY 29: MALSR. PAPI(P4R)—GA 3.0° TCH 50'. RVR-TMR Tree.

RWY 18-36: H6100X150 (ASPH-GRVD) S-75, D-165, 2D-300
PCN 91 F/C/X/T MIRL

RWY 18: REIL. PAPI(P4L)—GA 3.0° TCH 50'. Thld dsplcd 450'. Tree.

RWY 36: REIL. PAPI(P4L)—GA 3.25° TCH 54'. Thld dsplcd 500'. Tree.

LAND AND HOLD—SHORT OPERATIONS

LDG RWY	HOLD—SHORT POINT	AVBL LDG DIST
RWY 11	18-36	5800
RWY 18	11-29	3100

RUNWAY DECLARED DISTANCE INFORMATION

RWY 11: TORA-7200 TODA-7200 ASDA-7200 LDA-7200
RWY 18: TORA-6100 TODA-6100 ASDA-5600 LDA-5150
RWY 29: TORA-7200 TODA-7200 ASDA-7200 LDA-7200
RWY 36: TORA-6100 TODA-6100 ASDA-5650 LDA-5150

SERVICE: S4 FUEL 100LL, JET A OX 1, 3 LGT Rwy 11 ALSF-II

becomes SSALS when ATCT clsd. When twr clsd ACTIVATE MALSR

Rwy 29; REIL Rwy 18 and Rwy 36; TDZL Rwy 11; Centerline Rwy 11-29; PAPI Rwy 11, Rwy 29, Rwy 18 and Rwy 36; HIRL Rwy 11-29; MIRL Rwy 18-36—CTAF.

AIRPORT REMARKS: Attended 1100-0300Z†. For fuel after hrs call 207-774-6318 or 207-347-0445. Birds ocly on and invof arpt. Acft emerges btn 0500-1045Z† call Portland Air Rescue 207-874-8576. Twy A east of Rwy 18-36 clsd to acft with wingspan grt than 135 ft. No touch and go ldgs during snow removal. PAEW adj to rwys ngts; gnd vehicles monitor 120.9 when ATCT clsd. Maint run-ups Rwy 29 run-up area only. Prior to any run-ups, or for noise abatement info, ctc the arpt ops ctnr on freq 129.95 or call 207-756-8310. Pushback onto Twy A rqrld fm trml Gates 1-8, Twy C rqrld fm trml Gate 1A. Acft may not push short of Twy A fm Gates 1-8 nor short of Twy C fm Gate 1A. Ctc Gnd 121.9. Adz pushback opr you have Alpha or Charlie prior to push. Landing rights arpt (LRA): GA cust/img fac lctd at cargo apron. Acft arrg/depq cust must use extreme ctn when navigating on the cargo apron to minimize jet blast exposure to hngrs and acft. Flight Notification Svc (ADCUS) avbl.

AIRPORT MANAGER: 207-756-8310

WEATHER DATA SOURCES: ASOS 119.05 (207) 874-7914.

COMMUNICATIONS: CTAF 120.9 ATIS 119.05 (207) 775-1039 UNICOM 122.95

Ⓡ APP/DEP CON 119.75 (CASCO) 125.5 (LEWISTON) (1045-0500Z†)

Ⓡ BOSTON CENTER APP/DEP CON 128.2 (0500-1045Z†)

TOWER 120.9 (1045-0500Z†) GND CON 121.9

CLNC DEL 121.9

CLEARANCE DELIVERY PHONE: For CD when ATCT clsd, ctc Boston ARTCC at 603-879-6859.

AIRSPACE: CLASS C svc ctc APP CON svc 1045-0500Z†; other times CLASS E.

VOR TEST FACILITY (VOT) 111.0

RADIO AIDS TO NAVIGATION: NOTAM FILE BGR.

KENNEBUNK (H) VORW/DME 117.1 ENE Chan 118 N43°25.54' W70°36.81' 062° 18.7 NM to fld. 192/17W.

DME unusable:

030°-184° byd 25 NM blo 2,000'

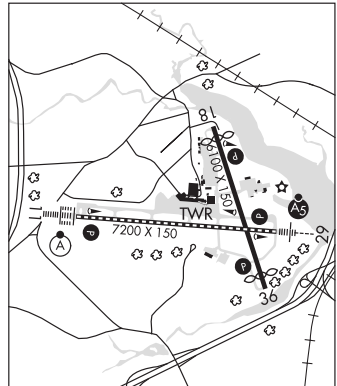
185°-230° byd 25 NM blo 2,500'

268°-278° byd 30 NM blo 4,600'

ILS/DME 109.9 I-PWM Chan 36 Rwy 11. Class IIIE.

ILS/DME 109.9 I-GCS Chan 36 Rwy 29. Class IIIE.

COMM/NAV/WEATHER REMARKS: Twr occasionally stays open byd 0500Z† during adverse wx.



PRESQUE ISLE

PRESQUE ISLE SPB (83B) 2 NW UTC-5(-4DT) N46°42.36' W68°03.64'

HALIFAX

500 TPA—1800(1300) NOTAM FILE BGR

WATERWAY 01W-19W: 6000X300 (WATER)

WATERWAY 01W: Trees.

WATERWAY 19W: Trees. Rgt tfc.

SEAPLANE REMARKS: Unattended. Rising terrain west side of lake. Spb lctd NW and invof Northern Maine Rgnl Arpt.

AIRPORT MANAGER: 207-764-2550

COMMUNICATIONS: CTAF/UNICOM 122.8

CLEARANCE DELIVERY PHONE: For CD ctc Boston ARTCC at 603-879-6859.