

ABBEVILLE CHRIS CRUSTA MEML (IYA)(KIYA) 3 E UTC-6(-5DT) N29°58.55' W92°05.05'

HOUSTON
H-7D, L-21B, 22E, GOMC
IAP

16 B TPA—See Remarks NOTAM FILE DRI

RWY 16-34: H5000X75 (ASPH) S-17 MIRL

RWY 16: REIL. PAPI(P2L)—GA 3.0° TCH 50'. Fence.

RWY 34: REIL. PAPI(P2L)—GA 3.0° TCH 50'. Trees.

SERVICE: S4 FUEL 100LL, JET A LGT MIRL Rwy 16-34; REIL Rwy 16 and Rwy 34 preset on low intensity dusk to dawn; to increase intensity ACTIVATE—CTAF.

AIRPORT REMARKS: Attended daylight hours. TPA—352 (336) ultralight within 3 miles of arpt. Rwy 16-34 has some small cracks; west side of Rwy 34 centerline bumpy.

AIRPORT MANAGER: (337) 898-4206

WEATHER DATA SOURCES: AWOS-3 118.875 (337) 892-0526.

COMMUNICATIONS: CTAF/UNICOM 122.8

Ⓡ **LAFAYETTE APP/DEP CON** 121.1 (1130-0430Z‡)

HOUSTON CENTER APP/DEP CON 126.35 (0430-1130Z‡)

GCO 135.075 (LAFAYETTE APCH and DE RIDDER FSS)

CLEARANCE DELIVERY PHONE: For CD ctc Lafayette Apch at 337-262-2729, when Apch clsd ctc Houston ARTCC at 281-230-5622.

RADIO AIDS TO NAVIGATION: NOTAM FILE LFT.

LAFAYETTE (L) VORTACW 109.8 LFT Chan 35 N30°11.63'

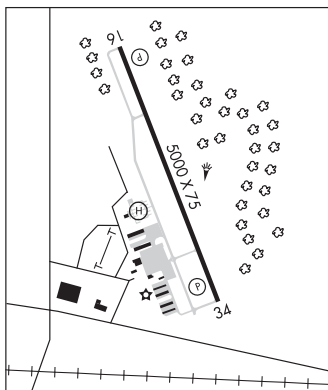
W91°59.55' 197° 13.9 NM to fld. 36/3E.

TACAN AZIMUTH unusable:

295°-320° blo 4,000'

NDB (MHW) 230 BNZ N30°03.67' W92°07.40' 156° 5.5 NM to fld. 13/2E. NOTAM FILE DRI.

LOC 110.95 I-IYA Rwy 16.



ACADIANA RGNL (See NEW IBERIA on page 106)

ALEXANDRIA

ALEXANDRIA INTL (AEX)(KAEX) P (ANG) 4 W UTC-6(-5DT) N31°19.64' W92°32.91'

HOUSTON
H-6I, L-21B, 22E
IAP, AD

89 B TPA—See Remarks Class I, ARFF Index D NOTAM FILE AEX

RWY 14-32: H9352X150 (CONC-GRVD) S-81, D-180, 2S-175,

2D-330, 2D/2D2-850 HIRL

RWY 14: SSALR. PAPI(P4L)—GA 3.0° TCH 70'. RVR-TR

RWY 32: REIL. PAPI(P4L)—GA 3.0° TCH 64'. RVR-TR

RWY 18-36: H7001X150 (ASPH-CONC-GRVD) S-75, D-130, 2S-165,

2D-191, 2D/2D2-502 HIRL

RWY 18: REIL. PAPI(P4L)—GA 3.0° TCH 79'.

RWY 36: REIL. PAPI(P4L)—GA 3.0° TCH 77'. Trees.

RUNWAY DECLARED DISTANCE INFORMATION

RWY 14: TORA-9352 TODA-9352 ASDA-9352 LDA-9352

RWY 18: TORA-7001 TODA-7001 ASDA-7001 LDA-7001

RWY 32: TORA-9352 TODA-9352 ASDA-9352 LDA-9352

RWY 36: TORA-7001 TODA-7001 ASDA-7001 LDA-7001

SERVICE: S4 FUEL 100, JET A, MOGAS OX 2, 4 **MILITARY— FUEL A+** (C318-443-5566.) (NC-100LL, A)

AIRPORT REMARKS: Attended continuously. Extensive helicopter tfc during military exercises. Center 75' of first 3000' of Rwy 18 is concrete, remainder is asphalt. Locked wheel and sharp turns prohibited on asph surfaces. Light acft frequently cross apch zones to Rwy 14-32 blo 2000' MSL. Extensive lgt acft tfc (cropdusters) when 900' to civ arpt 3.5 NM west southwest of field. TPA—right rectangular 1289 (1200), left overhead 1789 (1700). Commercial and lifeguard acft only on Commercial Terminal Ramp, all other acft utilize Twy A to FBO. Twy E between Twy F & Rwy 36 clsd indef. Twy G clsd indef. Twy F clsd indef.

AIRPORT MANAGER: 318-427-6419

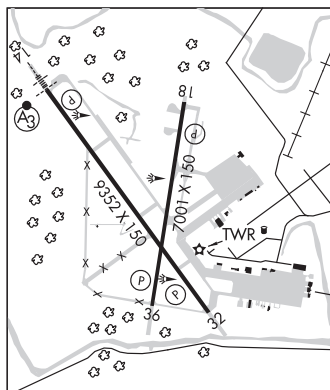
WEATHER DATA SOURCES: ASOS 123.975 (318) 442-6583.

COMMUNICATIONS: CTAF 127.35

RCO 122.55 (DE RIDDER RADIO)

Ⓡ **POLK APP/DEP CON** 125.4

TOWER 127.35 **GND CON** 121.9 **CLNC DEL** 121.9



CONTINUED ON NEXT PAGE

CONTINUED FROM PRECEDING PAGE

AIRSPACE: CLASS D.

RADIO AIDS TO NAVIGATION: NOTAM FILE AEX.

(H) VORTACW 116.1 AEX Chan 108 N31°15.40' W92°30.06' 327° 4.9 NM to fld. 80/3E.

VOR unusable:

- 035°-065° blo 2,000'
- 066°-094° byd 35 NM blo 3,000'
- 185°-200° byd 35 NM blo 3,000'
- 201°-214° byd 35 NM blo 2,000'
- 215°-260° blo 2,000'
- 261°-285° byd 35 NM blo 2,000'
- 357°-034° byd 35 NM blo 3,000'

ILS/DME 110.1 I-ERJ Chan 38 Rwy 14. Class IT.

ASR/PAR

COMM/NAV/WEATHER REMARKS: Multicom frequency 130.0 avbl.

ESLER RGNL (ESF)(KESF) P (ARNG) 10 NE UTC-6(-5DT) N31°23.69' W92°17.75'

HOUSTON

112 B NOTAM FILE ESF

H-6I, L-21B, 22E

RWY 09-27: H5999X150 (ASPH-GRVD) S-75, D-150, 2S-175,

IAP

2D-220 HIRL

RWY 09: REIL. VASI(V4L)—GA 3.0° TCH 53'. Trees.

RWY 27: MALSR.

RWY 14-32: H5601X150 (ASPH-GRVD) S-75, D-150, 2S-175,

2D-220 MIRL 0.4% up NW

RWY 14: REIL. PAPI(P4L)—GA 3.0° TCH 55'. Trees.

RWY 32: REIL. VASI(V4L)—GA 3.0° TCH 56'. Fence.

RUNWAY DECLARED DISTANCE INFORMATION

RWY 09: TORA-5999 TODA-5999 ASDA-5999 LDA-5999

RWY 14: TORA-5601 TODA-5601 ASDA-5601 LDA-5601

RWY 27: TORA-5999 TODA-5999 ASDA-5999 LDA-5999

RWY 32: TORA-5601 TODA-5601 ASDA-5601 LDA-5601

SERVICE: FUEL 100LL, JET A LGT ACTIVATE MIRL Rwy 14-32, HIRL

Rwy 09-27, MALSR Rwy 27, REIL Rwy 09, Rwy 14 and Rwy 32, and

twy lgts Twy A, Twy B, Twy C, Twy D and Twy E—CTAF. **MILITARY— FUEL**

A+ (avbl 1300-2300Z† Tue-Fri; OT, C318-443-5566.) (NC-100LL)

AIRPORT REMARKS: Attended Tue-Fri 1300-2330Z†. Fuel avbl Tue-Fri

1300-2300Z† Sat-Mon on call in advance 318-443-5566. Birds on

and invof arpt seasonally. PAEW adjacent rwys and twys.

AIRPORT MANAGER: (318) 290-5700

WEATHER DATA SOURCES: ASOS 119.425 (318) 484-9031.

COMMUNICATIONS: CTAF/UNICOM 122.8

® POLK APP/DEP CON 125.4

CLEARANCE DELIVERY PHONE: For CD ctc Polk Apch at 337-531-2352.

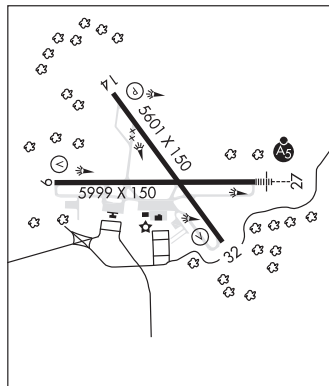
RADIO AIDS TO NAVIGATION: NOTAM FILE AEX.

ALEXANDRIA (H) VORTACW 116.1 AEX Chan 108 N31°15.40' W92°30.06' 049° 13.4 NM to fld. 80/3E.

VOR unusable:

- 035°-065° blo 2,000'
- 066°-094° byd 35 NM blo 3,000'
- 185°-200° byd 35 NM blo 3,000'
- 201°-214° byd 35 NM blo 2,000'
- 215°-260° blo 2,000'
- 261°-285° byd 35 NM blo 2,000'
- 357°-034° byd 35 NM blo 3,000'

ILS/DME 111.5 I-ESF Chan 52 Rwy 27. Class IA. ILS/DME unmonitored.



ALLEN PARISH (See OAKDALE on page 111)

ANGER N30°36.38' W90°25.27' NOTAM FILE DRI.

NEW ORLEANS

NDB (LOMW) 212 HP 178° 5.1 NM to Hammond Northshore Rgnl. 94/OE.