

MIAMI—OPA LOCKA EXEC (OPF)(KOPF) P (CG) 10 N UTC-5(-4DT) N25°54.45' W80°16.69'

MIAMI
H-81, L-23C, A
IAP, AD

8 B LRA NOTAM FILE OPF

RWY 09L-27R: H8002X150 (ASPH-GRVD) S-120, D-249, 2S-175,

2D-484, 2D/2D2-1000 PCN 61 F/A/W/T HIRL

RWY 09L: MALSR. VASI(V4L)—GA 3.0° TCH 56'. Trees.

RWY 27R: MALSR. VASI(V4L)—GA 3.0° TCH 53'. Trees. Rgt tfc.

RWY 12-30: H6800X150 (ASPH-GRVD) S-120, D-249, 2D-484,

2D/2D2-1000 PCN 61 F/A/X/T HIRL

RWY 12: MALSR. PAPI(P4L)—GA 3.0° TCH 50'. Thld dsplcd 800'.

Trees.

RWY 30: PAPI(P4L)—GA 3.0° TCH 50'. Tree.

RWY 09R-27L: H4309X100 (ASPH) S-96, D-154 PCN 36 F/A/Y/T

MIRL

RWY 09R: VASI(V4L)—GA 3.0° TCH 26'. Pole. Rgt tfc.

RWY 27L: PAPI(P4L)—GA 3.0° TCH 50'. Trees.

RUNWAY DECLARED DISTANCE INFORMATION

RWY 09L:TORA-8002 TODA-8202 ASDA-8202 LDA-8002

RWY 09R:TORA-4306 TODA-4306 ASDA-4306 LDA-4306

RWY 12: TORA-6800 TODA-7800 ASDA-7000 LDA-6000

RWY 27L:TORA-4306 TODA-4306 ASDA-4306 LDA-4306

RWY 27R:TORA-8002 TODA-8202 ASDA-8202 LDA-8002

RWY 30: TORA-6800 TODA-7000 ASDA-7000 LDA-6800

SERVICE: S4 **FUEL** 100LL, JET A **OX** 1, 2, 3, 4 **LGT** When ATCT clsd ACTVT MALSR Rwy 12; PAPI Rwy 12 and 30; HIRL Rwy 12-30—CTAF. 30 min PPR to req actvtn of MALSR Rwy 09L; MALS Rwy 27R; VASI Rwy 09L and 27R; HIRL Rwy 09L-27R—305-869-1660 and CTAF. **MILITARY—FUEL** J5 (PPR CG) A+ (C305-687-8410). (NC-100LL, A) Contract fuel—305-685-4646. **FLUID** LHOX

AIRPORT REMARKS: Attended continuously. Rwy 09L-27R when ATCT clsd PPR—305-869-1660. Birds invof arpt. Dual tfc pats for hls and fixed wing acft in use Rwy 09R-27L. Acft with wingspans grtr than 117' are prohibited fm txig on Twy P btn Twy H and Twy N8. Noise sensitive arpt. Flt T is lfd to acft 40,000 lbs max gross tkof wt and blw and only btn 1200-0400Z±. Specific tfc pats are published for hel and fixed wing tfc; compliance is mandatory. Obtain info fm ATCT or FBO or amgr; or req specific tfc pat instructions on initial ctc. Hel arr and dep avoid flying over parked or bxy acft. All acft and vehicles shud rprt psns to ATC by using the sfc painted spot nrs on all exits to the ramp and non-movement areas. Vehicle lane xing Twy E to the fire stn is non-movement. Twy C and B south of Twy P are non-movement areas. Twy T btn Twy E and Twy T8 rcdcd spd rqrd for acft wingspan more than 117'. Twy R btn Twy F and G rstrd to acft with wingspan less than 94'. Flt Notification Svc (ADCUS) avbl 1300-0400Z±.

AIRPORT MANAGER: 305-869-1662

WEATHER DATA SOURCES: ASOS 125.9 (305) 681-4063. LAWRS.

COMMUNICATIONS: CTAF 134.675 ATIS 125.9

Ⓡ APP/DEP CON 128.6

TOWER 134.675 (1200-0400Z±) **GND CON** 120.025 **CLNC DEL** 119.2

AIRSPACE: CLASS D svc 1200-0400Z±; other times CLASS G.

RADIO AIDS TO NAVIGATION: NOTAM FILE MIA.

DOLPHIN (H) VORTAC 113.9 DHP Chan 86 N25°48.00' W80°20.94' 035° 7.5 NM to fld. 6/4W.

TACAN AZIMUTH unusable:

055°-065° byd 35 NM blo 3,000'

185°-195° byd 23 NM

226°-236° byd 35 NM

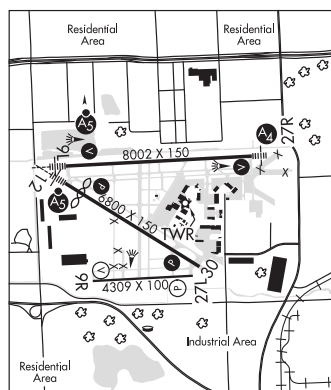
DME unusable:

055°-065° byd 35 NM blo 3,000'

ILS 110.5 I-OPF Rwy 09L. Class IB. LOC unmonitored when ATCT clsd. LOC unusable wi 0.2 NM.

ILS/DME 111.55 I-OLX Chan 52(Y) Rwy 12.

ILS/DME 111.35 I-PLJ Chan 50(Y) Rwy 27R. Class IA. Autopilot cpd apch na blw 700' MSL. LOC unusable 0.3 NM inbd.



MIAMI HOMESTEAD GENERAL AVIATION (See HOMESTEAD on page 109)