

NASHVILLE

JOHN C TUNE (JWN)(KJWN) 1 NW UTC-6(-5T) N36°10.98' W86°53.19'

ST LOUIS
H-6K, 9A, L-161
IAP

501 B NOTAM FILE BNA

RWY 02-20: H6001X100 (ASPH) S-35, D-97 MIRL 0.7% up N

RWY 02: REIL. PAPI(P4L)—GA 3.0° TCH 40'. Tree.

RWY 20: REIL. PAPI(P4L)—GA 3.0° TCH 40'. Tree. Rgt tfc.

RUNWAY DECLARED DISTANCE INFORMATION

RWY 02: TORA-6001 TODA-6001 ASDA-6001 LDA-6001

RWY 20: TORA-6001 TODA-6001 ASDA-6001 LDA-6001

SERVICE: S4 FUEL 100LL, JET A+ OX 2, 3

AIRPORT REMARKS: Attended continuously. Bird act in/ovf arpt. Deer in/ovf arpt. Rwy 20 preferred calm wind rwy.

AIRPORT MANAGER: 615-350-6551

WEATHER DATA SOURCES: AWOS-3 127.075 (615) 350-6222.

COMMUNICATIONS: CTAF/UNICOM 122.7

Ⓡ NASHVILLE APP/DEP CON 119.35

CLNC DEL 124.55

CLEARANCE DELIVERY PHONE: For CD ctc Nashville Apch on 124.55, if un call 615-695-4524.

RADIO AIDS TO NAVIGATION: NOTAM FILE BNA.

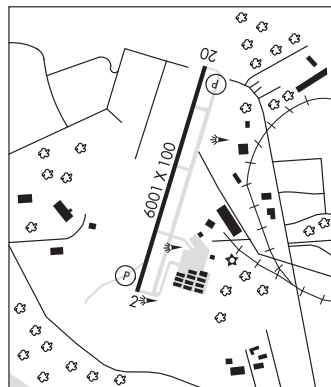
NASHVILLE (H) VORTACW 114.1 BNA Chan 88 N36°08.22' W86°41.09' 288° 10.2 NM to fld. 566/2W.

VORTAC unusable:

062°-069° blo 6,000'

ILS/DME 110.3 I-JWN Chan 40 Rwy 20. Class IA.

COMM/NAV/WEATHER REMARKS: Frequency bleedover occurs on all frequencies 1.75 NM N of Rwy 02-20.



NASHVILLE INTL (BNA)(KBNA) P (ANG) 5 SE UTC-6(-5DT) N36°07.47' W86°40.69'

ATLANTA
H-6K, 9A, L-16J
IAP, AD

599 B LRA Class I, ARFF Index C NOTAM FILE BNA

RWY 13-31: H11030X150 (CONC-GRVD) S-75, D-175, 2D-250,

2D/2D2-875 PCN 70 R/C/W/T HIRL

RWY 13: REIL. Thld dsp lcd 800'. Trees. 0.7% up.

RWY 31: REIL. Thld dsp lcd 741'. Tree.

RWY 02C-20C: H8001X150 (CONC-GRVD) S-75, D-209, 2D-350

PCN 56 R/B/W/T HIRL

RWY 02C: MALSR. RVR-T 0.5% up.

RWY 20C: REIL. PAPI(P4L)—GA 3.0° TCH 68'. RVR-R 0.4% up.

RWY 02R-20L: H8001X150 (CONC-GRVD) S-75, D-209, 2D-350

PCN 59 R/B/W/T HIRL CL

RWY 02R: ALSF2. TDZL. RVR-TMR 0.7% down.

RWY 20L: MALSR. RVR-TMR 0.3% up.

RWY 02L-20R: H7704X150 (CONC-GRVD) S-100, D-200, 2D-390,

2D/2D2-850 PCN 70 R/B/W/T HIRL CL 0.6% up S

RWY 02L: ALSF2. TDZL. RVR-TR

RWY 20R: MALSF. PAPI(P4R)—GA 3.0° TCH 79'. RVR-TR

RUNWAY DECLARED DISTANCE INFORMATION

RWY 02C: TORA-8001 TODA-8001 ASDA-7601 LDA-7601

RWY 02L: TORA-7702 TODA-7702 ASDA-7702 LDA-7702

RWY 02R: TORA-8000 TODA-8000 ASDA-8000 LDA-8000

RWY 13: TORA-10288 TODA-11029 ASDA-10288 LDA-9487

RWY 20C: TORA-8001 TODA-8001 ASDA-8001 LDA-8001

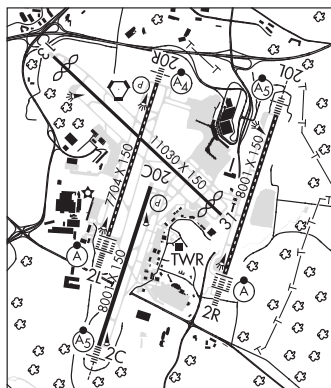
RWY 20L: TORA-8000 TODA-8000 ASDA-8000 LDA-8000

RWY 20R: TORA-7702 TODA-7702 ASDA-7702 LDA-7702

RWY 31: TORA-10228 TODA-11029 ASDA-10228 LDA-9487

SERVICE: S4 FUEL 100LL, JET A OX 2, 4 MILITARY— FUEL 100LL, A

AIRPORT REMARKS: Attended continuously. Bird act on and in/ovf arpt. Do not confuse 150' wide Twy S for Rwy 20C. Lgt'd jet blast fence 568' MSL 1167' NW of Rwy 13 thld; 598' MSL 1100' SE of Rwy 31 thld. No unauthorized 180° turns for acft 12500 lbs on asph sfc. No fit over main terminal bldg is permitted. Read back of all rwy holding instr is rqrd. Pilots comply with all hold short instr particularly at Twy K and Rwy 20C apch, Twy L at Rwy 13 apch, and Twy H at Rwy 31 apch. C concourse taxilanes are, inner taxilane for outbd tfc and outer taxilane for inbd tfc. All turbojet rwys have NS ABTMT procedures. Mil fighter/attack/trainer turbojets use Rwy 13-31 for arr and departure. Terminal ramp uncontrolled. Monitor 122.95 for ramp advisories. Flight Notification Service (ADCUS) avbl. NOTE: See Special Notices—Noise Abatement Procedures.



MILITARY REMARKS: ARNG PPR ctc 615-367-5579. ANG Call sign MUSIC CITY OPS.

CONTINUED ON NEXT PAGE

CONTINUED FROM PRECEDING PAGE

AIRPORT MANAGER: 615-275-1668

WEATHER DATA SOURCES: ASOS (615) 360-6133 LLWAS. TDWR.

COMMUNICATIONS: D-ATIS 135.1 UNICOM 122.95

TOWER 118.6 GND CON 121.9 CLNC DEL 126.05

Ⓡ APP CON 118.4 (East)

Ⓡ DEP CON 118.4 (East) 119.35 (West)

CPDLC (LOGON KUSA)

PDC

AIRSPACE: CLASS C svc ctc APP CON.

VOR TEST FACILITY (VOT) 108.6

RADIO AIDS TO NAVIGATION: NOTAM FILE BNA.

(H) VORTACW 114.1 BNA Chan 88 N36°08.22' W86°41.09' at fld. 566/2W.

VORTAC unusable:

062°-069° blo 6,000'

ILS 110.75 I-EZN Rwy 02C. Class IE.

ILS/DME 109.9 I-BNA Chan 36 Rwy 02L. Class IIIE.

ILS/DME 111.75 I-UQU Chan 54(Y) Rwy 02R. Class IIIE. LOC unusable byd 20° right of course.

ILS/DME 109.35 I-SSX Chan 30(Y) Rwy 20L. Class 1E.

ILS 111.3 I-VIY Rwy 20R. Class IB. LOC unusable byd 25° left and right of course.

ILS 111.95 I-PNO Rwy 31. Class IB.

NEW TAZEWEILL MUNI (See TAZEWEILL on page 431)

OBION N36°17.86' W88°59.69' NOTAM FILE MKL.

NDB (MHW/LOM) 212 UC 005° 4.9 NM to Everett-Stewart Rgnl. 310/OE. NDB unmonitored.

ST LOUIS

L-16H

ONEIDA

SCOTT MUNI (SCX)(KSCX) 4 SW UTC-5(-4DT) N36°27.34' W84°35.15'

1545 B NOTAM FILE BNA

RWY 05-23: H5506X75 (ASPH) S-28, D-40 PCN 7 F/C/X/T MIRL

0.4% up SW

RWY 05: REIL. PAPI(P4L)—GA 3.5° TCH 50'. Pole.

RWY 23: ODALS. REIL. PAPI(P4L)—GA 3.0° TCH 52'. Trees.

SERVICE: S4 FUEL 100LL, JET A+ OX 1, 4 LGT ACTVT ODALS Rwy 23; REIL Rwy 05 and Rwy 23; MIRL Rwy 05-23—CTAF. MIRL Rwy 05-23 preset low instst; increase instst—CTAF. PAPI Rwy 05 and Rwy 23 opr consly.

AIRPORT REMARKS: Attended Mon-Sat 1300-2300Z†, Sun 1730-2300Z†.

Aft hr attendant—423-223-4331. Unattended Thanksgiving and Christmas day. Fuel 24 hr credit card svc avbl. Wildlife on and invof arpt.

AIRPORT MANAGER: 423-569-8270

WEATHER DATA SOURCES: AWOS-3 135.025 (423) 569-6651.

COMMUNICATIONS: CTAF/UNICOM 122.8

Ⓡ INDIANAPOLIS CENTER APP/DEP CON 124.625

CLEARANCE DELIVERY PHONE: For CD ctc Indianapolis ARTCC at 317-247-2411.

RADIO AIDS TO NAVIGATION: NOTAM FILE BNA.

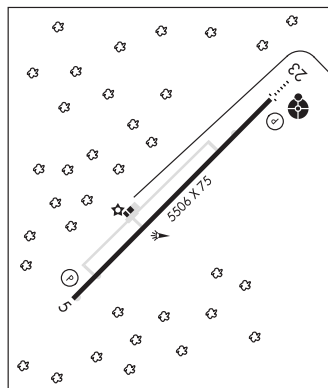
LIVINGSTON (L) DME 108.4 LVT Chan 21 N36°35.07'

W85°10.00' 107° 29.1 NM to fld. 1020/2W.

CINCINNATI

H-9A, L-25A

IAP



OUTLAW FLD (See CLARKSVILLE on page 396)