

## MONROEVILLE

**MONROE CO AEROPLEX** (MVC)(KMVC) 3 S UTC-6(-5DT) N31°27.48' W87°21.06'

**NEW ORLEANS**  
H-6K, 9A, L-22H  
IAP

419 B NOTAM FILE ANB

RWY 03-21: H6028X100 (ASPH) S-70 MIRL

RWY 03: REIL. PAPI(P4L)—GA 3.0° TCH 62'. Tree.

RWY 21: REIL. PAPI(P4L)—GA 3.0° TCH 40'. Tree.

**SERVICE:** FUEL 100LL, JET A+ LGT ACTVT REIL Rwy 03 and 21; PAPI Rwy 03 and 21—CTAF.

**AIRPORT REMARKS:** Attended Mon-Fri 1400-0200Z†, Sat-Sun 1400-2300Z†.

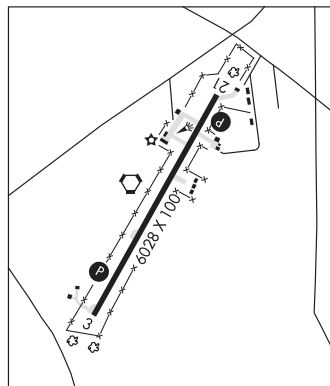
**AIRPORT MANAGER:** 251-575-4235

**COMMUNICATIONS:** CTAF/UNICOM 123.0

Ⓜ ATLANTA CENTER APP/DEP CON 118.55

**RADIO AIDS TO NAVIGATION:** NOTAM FILE ANB.

**MONROEVILLE (L) VORTACW** 116.8 MVC Chan 115 N31°27.56' W87°21.15' at fld. 420/4E.



**MONTGOMERY RGNL (DANNELLY FLD)** (MGM)(KMGM) P (ANG ARNG) 6 SW UTC-6(-5DT)  
N32°18.04' W86°23.64'

**ATLANTA**  
H-6K, 9A, 12E, L-18I  
IAP, AD

221 B TPA—See Remarks LRA Class I, ARFF Index B NOTAM FILE MGM MON Airport

RWY 10-28: H9020X150 (ASPH-GRVD) S-105, D-116, 2D-180 PCN 35 F/C/X/T HIRL

RWY 10: MALSR. PAPI(P4R)—GA 3.0° TCH 64'. RVR-T Tree. Rgt tfc. 0.3% down.

RWY 28: MALSR. PAPI(P4L)—GA 3.0° TCH 75'. RVR-R Tree.

RWY 03-21: H4011X150 (ASPH) S-40, D-95 PCN 28 F/C/X/T MIRL 0.9% up SW

RWY 03: REIL. PAPI(P4L)—GA 3.0° TCH 43'. Fence.

RWY 21: PAPI(P4L)—GA 3.0° TCH 55'. Tree.

**ARRESTING GEAR/SYSTEM**

RWY 10 HOOK BAK-12B(B) (1500'

HOOK BAK-12B(B) (1510'). RWY 28

**SERVICE:** S4 FUEL 100LL, JET A, A++ OX 1, 2 LGT When ATCT clsd HIRL Rwy 10-28 preset med instst, MIRL Rwy 03-21 preset low instst. PAPI Rwy 03, 21, 10 and 28 opr consly. ACTVT REIL Rwy 03; MALSR Rwy 10 and 28—CTAF.

**MILITARY—A-GEAR** Rwy 10-28 BAK-12A(B) avbl (no tie downs) 15 min PN 1200-0500Z†. Raised cable on ATIS broadcast. JASU 4(MC-1) 5(M32-60) FUEL (A++, A++100 (Mil)) A, A+ (C800-521-4106.) (NC-100LL) FLUID SP PRESAIR LOX OIL O-133-148(Mil)

**AIRPORT REMARKS:** Attended continuously. Bird haz. Ctc base ops for current bird watch cond. Bird watch condition BASH PHASE II July-Sept and Dec-Mar for migratory bird act. Do not mistake Maxwell AFB, 6NM north, for Montgomery Rgnl. Numerous helicopter and low speed acft infov arpt dur dalgth hrs. CLOSED to unscheduled air carrier ops and large mil acft rqrq parking, exc 72 hrs PPR ctc arpt mgr 334-281-5040. No 180° turns Rwy 10-28 by acft DC-9 or larger. Air carrier and large mil acft should not taxi on Rwy 03-21. TPA-979(1200) conventional acft, 1479(1700) jet acft. Rwy 10-28 DC10-10 DDT 320,000 lbs, DC10-30 and DC10-40 DDT 400,000 lbs, L-1011 DDT 350,000 lbs, B-747 DDT 500,000 lbs. Flight Notification Service (ADCUS) avbl.

**MILITARY REMARKS: CAUTION** Bird haz. Ctc base OPS for current bird watch cond. Do not mistake Maxwell AFB 6 NM N for Montgomery Rgnl. Numerous copter and low speed acft infov arpt dur daylt hrs. ANG Const area adj to N edge of ramp. Ctc Base Ops for tax/prkg instrns DSN 358-9255 or C334-394-7255. BASH PHASE II in eff Apr and 1 Oct to 31 Dec. Rwy cond code not reported. Transport acft ltd to min thrust while on ANG ramp. Cones blocking throat of ANG ramp. Ctc Base OPS prior to entering ANG ramp for removal. Inbd for ANG ctc BAMA OPS 15 min prior to ldg. Acft prk extremely ltd ctc Base OPS for parking instr. Tsnt parking extremely limited. PPR for use of ANG ramp ctc ANG OPS DSN 358-9255/9256 C334-394-7255/7256. ARNG Fix wing acft inbound to ARNG ramp ctc ARNG 10 min prior to ETA and upon entry Twy D. L-3 (C-12) maint avbl on call, C334-280-4890 communications.

CONTINUED ON NEXT PAGE

## CONTINUED FROM PRECEDING PAGE

**AIRPORT MANAGER:** 334-281-5040

**WEATHER DATA SOURCES:** ASOS (334) 288-0445 LLWAS.

**COMMUNICATIONS:** SFA 122.85 CTAF 119.7 ATIS 120.675 UNICOM 122.95

RCO 122.2 (ANNISTON RADIO)

RCO 122.1R 112.1T (ANNISTON RADIO)

Ⓡ APP/DEP CON 124.0 (1200-0500Z±) other times ctc

Ⓡ ATLANTA CENTER APP/DEP CON 120.55

**TOWER** 119.7 (1200-0500Z±) **GND CON** 121.7 **CLNC DEL** 118.3

**ANG OPS** 40.3 360.975 **ARNG OPS** 38.2 149.775 226.35 (primary)

**CLEARANCE DELIVERY PHONE:** For CD if una to ctc on FSS freq, ctc dannelly Apch at 334-284-4575, when ATCT clsd ctc Atlanta ARTCC at 770-210-7692.

**AIRSPACE:** CLASS D svc 1200-0500Z±; other times CLASS E.

TRSA svc ctc APP CON

**RADIO AIDS TO NAVIGATION:** NOTAM FILE MGM.

(H) **VORTAC** 112.1 MGM Chan 58 N32°13.34' W86°19.18' 318° 6.0 NM to fld. 271/3E.

**MARRA NDB (MHW)** 245 MG N32°18.70' W86°30.64' 097° 6.0 NM to fld. 240/1W.

**ILS** 109.9 I-MGM Rwy 10. Class IA. LOM MARRA NDB. OM unmonitored. Unmonitored when ATCT closed.

**ILS** 108.5 I-DLV Rwy 28. Class IT. OM unmonitored. Unmonitored when ATCT closed.

**ASR** (1200-0500Z±)

**MOONTOWN** (See HUNTSVILLE on page 60)

**MOTON FLD MUNI** (See TUSKEGEE on page 78)

## MUSCLE SHOALS

**NORTHWEST ALABAMA RGNL** (MSL)(KMSL) 1 E UTC-6(-5DT) N34°44.72' W87°36.61'

**ATLANTA**  
H-6K, 9A, L-18H  
IAP

551 B Class I, ARFF Index A NOTAM FILE MSL

**RWY 12-30:** H6694X150 (ASPH-GRVD) S-59, D-98, 2D-160

PCN 34 F/C/X/T HIRL

**RWY 12:** REIL. PAPI(P4R)—GA 3.0° TCH 56'.

**RWY 30:** MALSR. Tower.

**RWY 18-36:** H4000X100 (ASPH) S-30, D-50 PCN 6 F/C/Y/U MIRL

**RWY 18:** PAPI(P4L)—GA 3.0° TCH 35'.

**RWY 36:** PAPI(P4L)—GA 3.0° TCH 40'.

**SERVICE:** S2 **FUEL** 100LL, JET A **LGT** ACTIVATE MALSR Rwy 30; REIL Rwy 12; PAPI Rwy 12, Rwy 18 and Rwy 36; HIRL Rwy 12-30 and MIRL Rwy 18-36—CTAF.

**AIRPORT REMARKS:** Attended 1200-0000Z± exc Thanksgiving, Christmas and New Years Day. Fuel avbl nights call 256-383-2270. AVGAS 100LL self serve avbl 24 hrs. PPR for unscheduled air carrier and charter ops with more than 30 pax seats; call arprt mgr 256-381-2869 ext 101 or fax 256-381-2915. Rwy 30 calm wind rwy. No general aviation parking on air carrier ramp. Twy A is the preferred twy for air carrier and charter ops using the air carrier ramp. Ldg fee and pax fac charge for unscheduled air carrier and charter ops. Ldg fee for acft over 12,500 lbs.

**AIRPORT MANAGER:** 256-383-2270

**WEATHER DATA SOURCES:** ASOS 119.425 (256) 383-1033.

**COMMUNICATIONS:** CTAF/UNICOM 123.05

**MUSCLE SHOALS RCO** 122.4 (ANNISTON RADIO)

**MEMPHIS CENTER APP/DEP CON** 120.8

**GCO** 121.725 (MEMPHIS CENTER)

**CLEARANCE DELIVERY PHONE:** For CD if una to ctc on FSS freq, ctc Memphis ARTCC at 901-368-8453.

**AIRSPACE:** CLASS E svc 1200-0400Z±; other times CLASS G.

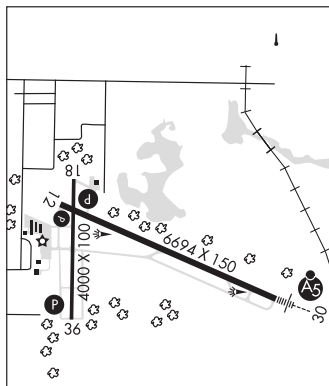
**RADIO AIDS TO NAVIGATION:** NOTAM FILE MSL.

**MUSCLE SHOALS (L) VORTACW** 116.5 MSL Chan 112 N34°42.41' W87°29.49' 290° 6.3 NM to fld. 583/1E.

TACAN AZIMUTH & DME unusable:

046°-084° byd 25 NM blo 2,000'

**ILS** 109.7 I-MSL Rwy 30. Class IE. ILS LOC unusable byd 28° left of course and byd 27° right of course.



**NORTH PICKENS** (See REFORM on page 71)

**NORTHEAST ALABAMA RGNL** (See GADSDEN on page 52)