

SAN JOSE

NORMAN Y MINETA SAN JOSE INTL (SJC)(KSJC) 2 NW UTC-8(-7DT) N37°21.78' W121°55.72' **SAN FRANCISCO**
 62 B TPA—See Remarks LRA Class I, ARFF Index D NOTAM FILE SJC **H-3B, L-2F, 3B, A**
RWY 12L-30R: H1 1000X150 (CONC-GRVD) S-220, D-250, 2S-175, **IAP, AD**
 2D-605 PCN 82 R/B/W/T HIRL CL

RWY 12L: REIL. PAPI(P4R)—GA 3.0° TCH 70'. Thld dspcld 1308'. Pole.

RWY 30R: PAPI(P4L)—GA 3.0° TCH 69'. Thld dspcld 2537'. Tree. Rgt tfc. 0.3% down.

RWY 12R-30L: H1 1000X150 (CONC-GRVD) S-220, D-250, 2S-175, 2D-605, 2D/2D2-875 PCN 67 R/C/W/T HIRL CL

RWY 12R: MALSR. PAPI(P4R)—GA 3.0° TCH 75'. RVR-TR Thld dspcld 1297'. Pole. Rgt tfc.

RWY 30L: MALSR. PAPI(P4L)—GA 3.0° TCH 70'. RVR-TR Thld dspcld 2537'. Fence. 0.3% down.

RUNWAY DECLARED DISTANCE INFORMATION

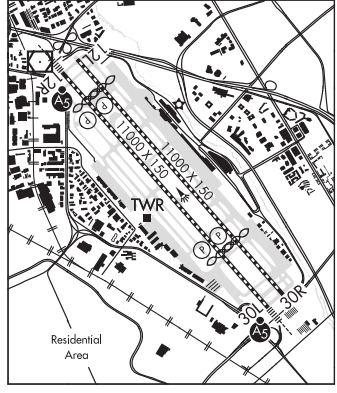
RWY 12L:TORA-10139 TODA-11000 ASDA-10139 LDA-8831

RWY 12R:TORA-9883 TODA-11000 ASDA-9883 LDA-8587

RWY 30L:TORA-10152 TODA-11000 ASDA-10152 LDA-7614

RWY 30R:TORA-10134 TODA-11000 ASDA-10134 LDA-7597

SERVICE: S4 **FUEL** 100LL, JET A **OX** 1, 2, 3, 4 **LGT** Rwy 30L PAPI unusable byd 7° of centerline of rwy. **ACTIVATE** MALSR Rwy 12R, MALSR Rwy 30L, HIRL Rwy 12L-30R, HIRL Rwy 12R-30L—Frequency 124.0 when twr clsd.



AIRPORT REMARKS: Attended continuously. Birds frequently on or in vicinity of arpt. First 400' Rwy 30R and Rwy 30L CLOSED for tkf DC10, MD11, L1011. High intensity light activity: High intensity lights (lasers and large media screens) may be visible to arrival and departure acft to San Jose international arpt during events at the stadium complex (37°24.15' N/ 121°58.14' W, SJC VORTAC R-303/2.1 DME) Flight crews should use caution when opr in this area during stadium events. Cockpit illumination and glare effect reducing visibility may be intensified during arrival and departure ops especially at night. Noise abatement procedure: Rwy 12R-30L is preferred arrival rwy for jet acft and Rwy 12L-30R is the preferred departure rwy for jet acft. All jet acft take-offs are to be initiated from end of rwy unless directed otherwise by twr. TPA-1004(942) single-engine acft, 1504(1442) multi-engine and turbine powered acft. Unscheduled ops by group 5 acft (B747) and larger not authorized except with prior arpt approval ctc arpt manager 408-392-3500. All turbine engine run-ups require prior arpt approval, ctc manager on duty 408-392-3500. Curfew hours 0700-1500Z± FAR 36 Stage II, 0730-1430Z± FAR 36 Stage III acft listed on the schedule of authorized acft issued by the Director of Aviation. Delayed scheduled flts and alternate emerg ops may be exempt from curfew hr restrictions. Prior arpt notification is required for all late/early arrivals. Ctc manager on duty at 408-392-3500. Twy D between Twy W and Twy V ltd to acft with a wingspan of less than 118' (B-737-900 or smaller). Twy Y will be periodically rstd to acft with a wingspan of less than 171 ft (MD-11 or smaller) drg B-787 and B-747 ops on Rwy 12L-30R. Twy Z will be periodically rstd to acft with a wingspan of less than 118 ft (B-737-900 or smaller) drg B-787 and B-747 ops. Twy Z btn 200 ft NW of Twy H and 200 ft NW of Twy K ltd to acft with wingspan of less than 135 ft (B-757-300 or smaller). Twy W between Twy J and Twy L can support Group IV acft. Twy V ltd to acft with wingspan of less than 135' (B-757-300 or smaller). RRP rqrd from FBO for transient hel ops. Rwy 12R-30L 900' dspcld thld on NW end not grvd. Rwy 30L 1873' dspcld thld on SE end not grvd. ASSC surveillance system in use. Pilots should opr transponders with mode C on all twys and rwys. Flight Notification Service (ADCUS) available.

AIRPORT MANAGER: (408) 277-5100

WEATHER DATA SOURCES: ASOS 126.95 (408) 969-0838. LAWR5.

COMMUNICATIONS: CTAF 124.0 UNICOM 122.95 D-ATIS 126.95 408-980-8459

Ⓡ **NORCAL APP CON** 120.1 121.3 124.525 125.35 126.475 133.95 134.5

TOWER 124.0 (1400-0800Z±) **GND CON** 121.7 **CLNC DEL** 118.0 **PRE TAXI CLNC** 118.0

Ⓡ **NORCAL DEP CON** 121.3

CPDLC (LOGON KUSA)

PDC

CLEARANCE DELIVERY PHONE: For CD when ATCT is clsd ctc NorCal Apch at 916-361-3748.

AIRSPACE: CLASS C svc ctc **APP CON** svc 1400-0800Z±; other times CLASS E.

RADIO AIDS TO NAVIGATION: NOTAM FILE SJC.

SAN JOSE (L) VOR/DME 114.1 SJC Chan 88 N37°22.48' W121°56.68' 116° 1.0 NM to fld. 35/16E.

VOR unusable:

000°-070° byd 25 NM blo 6,500'

140°-160° byd 25 NM blo 6,100'

170°-240° byd 30 NM blo 6,700'

ILS/DME 110.9 I-SLV Chan 46 Rwy 12R. Class IE. Unmonitored when ATCT closed.

ILS/DME 110.9 I-SJC Chan 46 Rwy 30L. Class IIE. Unmonitored when ATCT closed.

COMM/NAV/WEATHER REMARKS: Emerg frequency 121.5 not avbl at tower.