

(BNYRD6.BNYRD) 18144

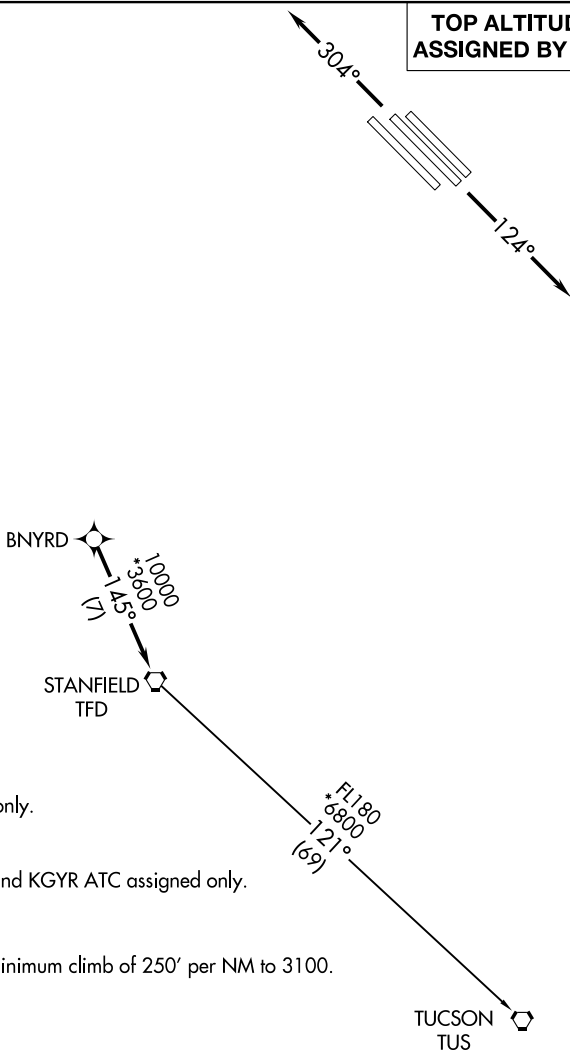
# BNYRD SIX DEPARTURE (RNAV)

AL-74 (FAA)

PHOENIX-MESA GATEWAY (IWA)  
PHOENIX, ARIZONA

ATIS ★  
133.5 270.275  
CLNC DEL  
135.05  
GND CON  
128.25 275.8  
GATEWAY TOWER ★  
120.6 289.4  
PHOENIX DEP CON  
124.9 353.8

**TOP ALTITUDE:  
ASSIGNED BY ATC**



- NOTE: RNAV 1.
- NOTE: Turbojets and turboprops only.
- NOTE: RADAR required.
- NOTE: GPS required.
- NOTE: Aircraft departing KGEU and KGYR ATC assigned only.

### TAKEOFF MINIMUMS

Rwys 12L/C/R: Standard with a minimum climb of 250' per NM to 3100.  
Rwys 30L/C/R: Standard.

NOTE: Chart not to scale.



### DEPARTURE ROUTE DESCRIPTION

TAKEOFF RUNWAYS 12L/C/R: Climb heading 124° or as assigned by ATC, thence. . . .

TAKEOFF RUNWAYS 30L/C/R: Climb heading 304° or as assigned by ATC, thence. . . .

. . . expect RADAR vectors to BNYRD, then on track 145° to TFD VORTAC, then on (transition), maintain ATC assigned altitude, expect filed altitude 3 minutes after departure.

TUCSON TRANSITION (BNYRD6.TUS)

# BNYRD SIX DEPARTURE (RNAV)

(BNYRD6.BNYRD) 24MAY18

PHOENIX, ARIZONA  
PHOENIX-MESA GATEWAY (IWA)

SW-4, 31 DEC 2020 to 28 JAN 2021

SW-4, 31 DEC 2020 to 28 JAN 2021