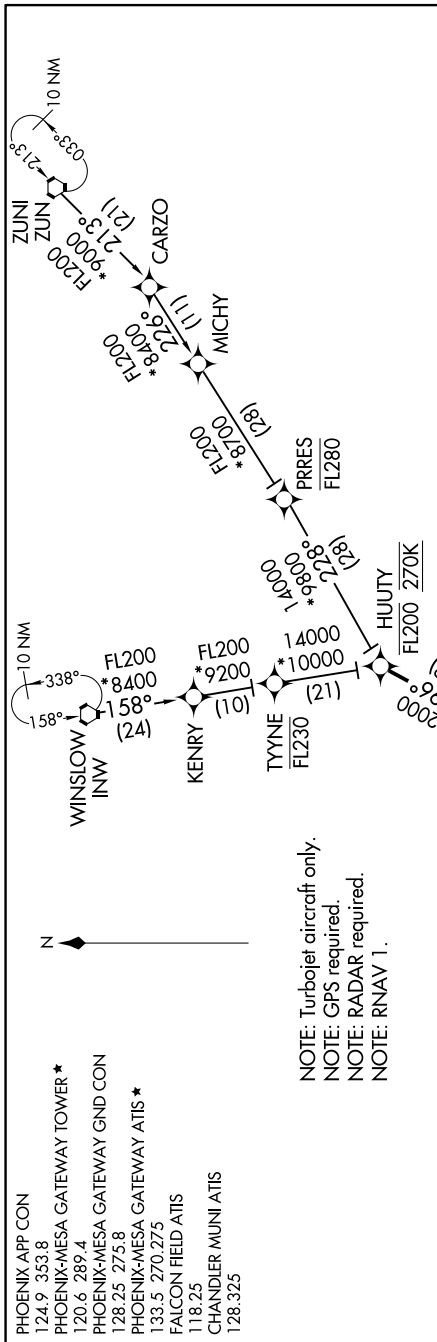


SW-4, 31 DEC 2020 to 28 JAN 2021



NOTE: Turbojet aircraft only.  
NOTE: GPS required.  
NOTE: RADAR required.  
NOTE: RNAV 1.

ARRIVAL ROUTE DESCRIPTION

WINSLOW TRANSITION (INW.HUUTY1)  
ZUNI TRANSITION (ZUN.HUUTY1)

From HUUTY on track 196° to CHEKR. Cross CHEKR between 12000 and 14000 and at 270 KTS. From CHEKR via 219° track to ROSEE, cross ROSEE between 10000 and 11000 and at 250 KTS, from ROSEE via 221° track to CNYON, cross CNYON at 9000, from CNYON via 222° track to BAYTA, cross BAYTA at 8000, from BAYTA via 200° track to AEJAY, cross AEJAY at 7000 and at 210 KTS, from AEJAY via 167° track to TYLIK, cross TYLIK at 5500, then on 167° heading. Expect RADAR vectors to final approach course.

LOST COMMUNICATIONS:

After AEJAY on track 215° direct IWA VORTAC.  
Hold NE, LT, 215° inbound, maintain 7000.

SW-4, 31 DEC 2020 to 28 JAN 2021

NOTE: Chart not to scale.