

LOC I-HWA 110.15	APP CRS 303°	Rwy Idg TDZE Apt Elev	10201 1380 1382
----------------------------	------------------------	-----------------------------	--

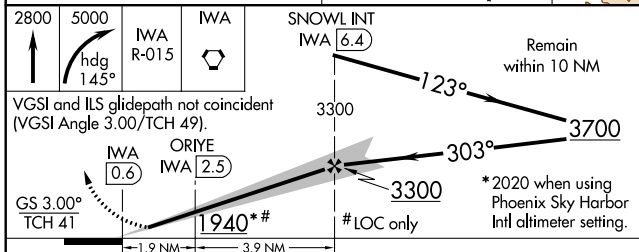
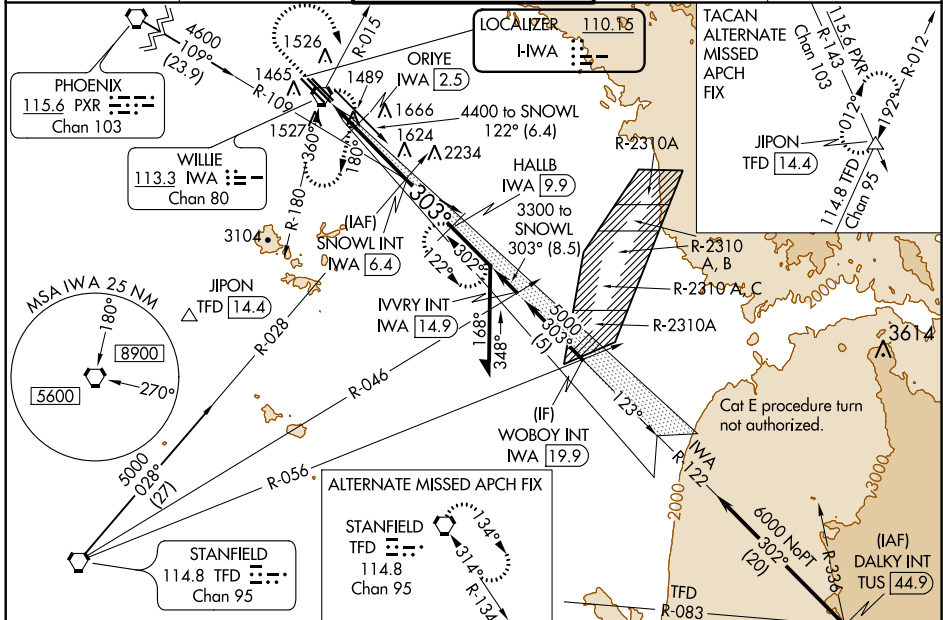
ILS or LOC RWY 30C

PHOENIX-MESA GATEWAY (IWA)

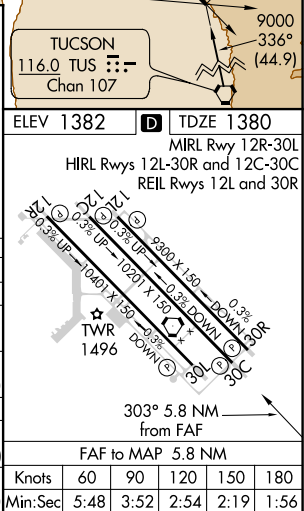
⚠ When local altimeter setting not received, use Phoenix Sky Harbor Intl altimeter setting and increase all DA/MDA 80 feet, increase S-ILS 30C, S-LOC 30C all Cats visibility ¼ mile, Circling Cats A/B/C visibility ¼ mile, Cat E ½ mile.

MISSED APPROACH: Climb to 2800 then climbing right turn to 5000 via heading 145° and IWA VORTAC R-015 to IWA VORTAC and hold, continue climb-in-hold to 5000 (TACAN aircraft continue via IWA VORTAC R-122 to HALLB/9.9 DME and hold, continue climb-in-hold to 5000, hold SE, LT, 302° inbound).

ATIS ★ 133.5 270.275	PHOENIX APP CON 124.9 353.8	GATEWAY TOWER ★ 120.6 (CTAF) 289.4	GND CON 128.25 275.8	CLNC DEL 135.05
--------------------------------	---------------------------------------	--	--------------------------------	---------------------------



CATEGORY	A	B	C	D	E
S-ILS 30C		1580-¾	200 (200-¾)		
S-LOC 30C	1940-1	560 (600-1)	1940-1½ 560 (600-1½)	1940-1¾ 560 (600-1¾)	1940-2 560 (600-2)
CIRCLING	1940-1	558 (600-1)	1940-1½ 558 (600-1½)	1940-2 558 (600-2)	2020-2¼ 638 (700-2¼)
ORIE FIX MINIMUMS					
S-LOC 30C	1800-1	420 (500-1)	1800-1¼ 420 (500-1¼)		1800-1½ 420 (500-1½)
CIRCLING	1880-1	498 (500-1)	1880-1½ 498 (500-1½)	1940-2 558 (600-2)	2020-2¼ 638 (700-2¼)



SW-4, 31 DEC 2020 to 28 JAN 2021

SW-4, 31 DEC 2020 to 28 JAN 2021