

IZZZO SEVEN DEPARTURE (RNAV)

AL-74 (FAA)

PHOENIX-MESA GATEWAY (IWA)
PHOENIX, ARIZONA

SW-4, 31 DEC 2020 to 28 JAN 2021

TOP ALTITUDE: ASSIGNED BY ATC

ATIS* 133.5 270.275
 CLNC DEL 135.05
 GND CON 128.25 275.8
 GATEWAY TOWER* 120.6 289.4
 PHOENIX DEP CON 124.9 353.8

RNAV 1.

NOTE: Turbojets and turboprops only.

NOTE: RADAR required.

NOTE: GPS required.

NOTE: Aircraft requesting FL220 and below must file BLYTHE TRANSITION.

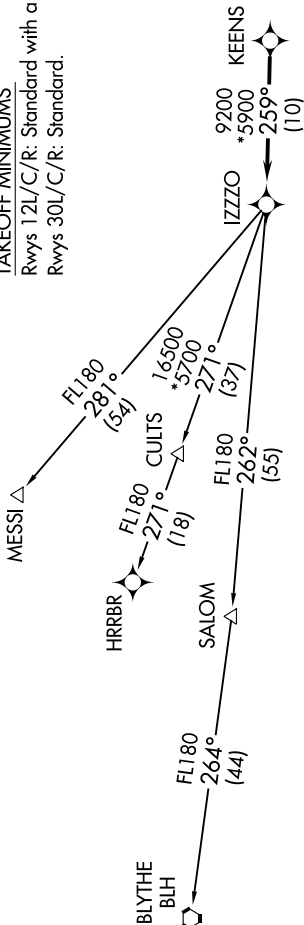
NOTE: Turbojets landing LAX, file MESSI TRANSITION.

NOTE: Aircraft landing other than LAX and turboprops landing at LAX: Requesting FL240 and above, file HRRBR TRANSITION.

NOTE: Aircraft departing KGEU and KGYR ATC assigned only.

TAKEOFF MINIMUMS

Rwys 12L/C/R: Standard with a minimum climb of 250' per NM to 3100.
 Rwys 30L/C/R: Standard.



DEPARTURE ROUTE DESCRIPTION

TAKEOFF RUNWAYS 12L/C/R: Climb heading 124° or as assigned by ATC, thence. . . .

TAKEOFF RUNWAYS 30L/C/R: Climb heading 304° or as assigned by ATC, thence. . . .

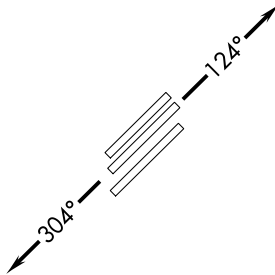
. . . . expect RADAR vectors to KEENS, then on track 259° to IZZO, then on (transition).

Maintain ATC assigned altitude, expect filed altitude 3 minutes after departure.

BLYTHE TRANSITION (IZZZO7.BLH)

HRRBR TRANSITION (IZZZO7.HRRBR)

MESSI TRANSITION (IZZZO7.MESSI)



NOTE: Chart not to scale.

IZZZO SEVEN DEPARTURE (RNAV)

PHOENIX, ARIZONA
PHOENIX-MESA GATEWAY (IWA)

SW-4, 31 DEC 2020 to 28 JAN 2021