

LALUZ SIX DEPARTURE (RNAV)

AL-74 (FAA)

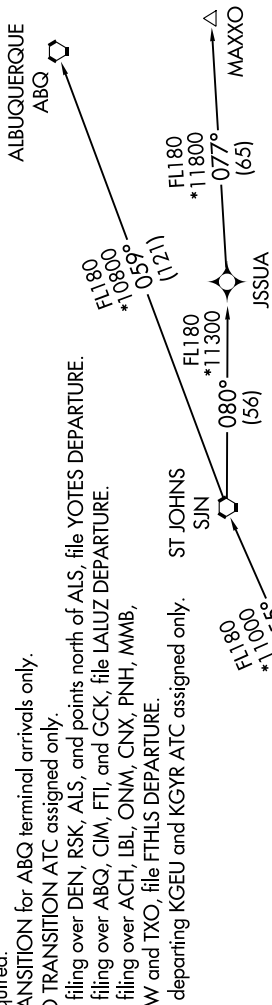
PHOENIX-MESA GATEWAY (IWA)
PHOENIX, ARIZONA

SW-4, 31 DEC 2020 to 28 JAN 2021

TOP ALTITUDE: ASSIGNED BY ATC

- NOTE: RNAV 1.
- NOTE: Turbojets and turboprops only.
- NOTE: RADAR required.
- NOTE: GPS required.
- NOTE: SJN TRANSITION for ABQ terminal arrivals only.
- NOTE: MAXXO TRANSITION ATC assigned only.
- NOTE: Aircraft filing over DEN, RSK, ALS, and points north of ALS, file YOTES DEPARTURE.
- NOTE: Aircraft filing over ABQ, CIM, FTJ, and GCK, file LALUZ DEPARTURE.
- NOTE: Aircraft filing over ACH, IBL, ONM, CNX, PNH, MMB, TCC, IRW and TXO, file FTHLS DEPARTURE.
- NOTE: Aircraft departing KGEU and KGYR ATC assigned only.

- ATIS ★ 133.5 270.275
- CINC DEL 135.05
- GND CON 128.25 275.8
- GATEWAY TOWER ★ 120.6 289.4
- PHOENIX DEP CON 124.9 353.8



TAKEOFF MINIMUMS

Rwys 12L/C/R: Standard with a minimum climb of 250' per NM to 3100.
Rwys 30L/C/R: Standard.

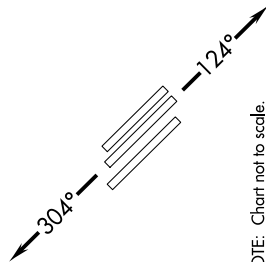
DEPARTURE ROUTE DESCRIPTION

- TAKEOFF RUNWAYS 12L/C/R: Climb heading 124° or as assigned by ATC, thence. . . .
- TAKEOFF RUNWAYS 30L/C/R: Climb heading 304° or as assigned by ATC, thence. . . .
- . . . expect RADAR vectors to FORPE, then on track 055° to LALUZ, then on (transition).
- Maintain ATC assigned altitude, expect filed altitude 3 minutes after departure.

ALBUQUERQUE TRANSITION (LALUZ6.ABQ)

MAXXO TRANSITION (LALUZ6.MAXXO)

ST JOHNS TRANSITION (LALUZ6.SJN)



NOTE: Chart not to scale.

SW-4, 31 DEC 2020 to 28 JAN 2021