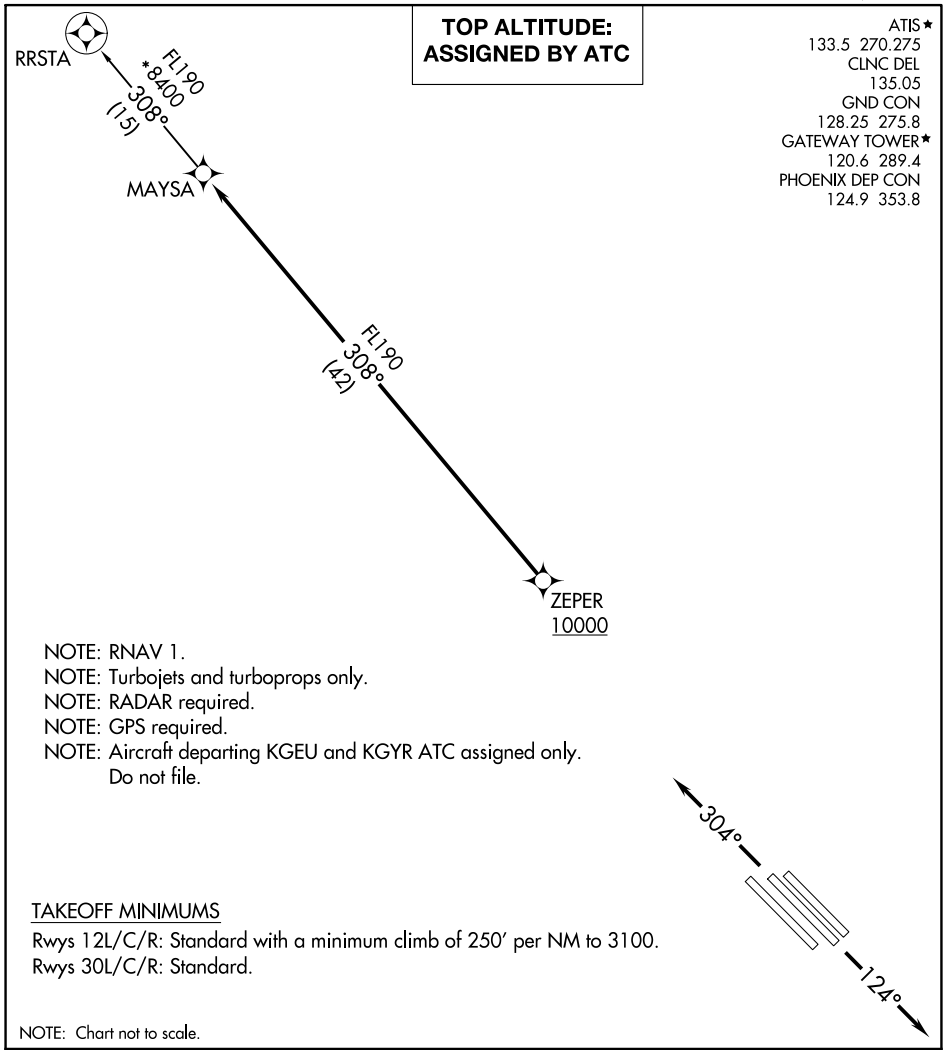


(MAYSA7.MAYSA) 20142

MAYSA SEVEN DEPARTURE (RNAV) AL-74 (FAA)

PHOENIX-MESA GATEWAY (IWA)  
PHOENIX, ARIZONA



SW-4, 31 DEC 2020 to 28 JAN 2021

SW-4, 31 DEC 2020 to 28 JAN 2021

**DEPARTURE ROUTE DESCRIPTION**

TAKEOFF RUNWAYS 12L/C/R: Climb on heading 124° or as assigned by ATC. Thence. . .

TAKEOFF RUNWAYS 30L/C/R: Climb on heading 304° or as assigned by ATC. Thence. . .

. . . expect RADAR vectors to cross ZEPER at or above 10000, then on track 308° to MAYSA, then on RRSTA TRANSITION. Maintain ATC assigned altitude, expect filed altitude 3 minutes after departure.

RRSTA TRANSITION (MAYSA7.RRSTA)

MAYSA SEVEN DEPARTURE (RNAV)  
(MAYSA7.MAYSA) 21MAY20

PHOENIX, ARIZONA  
PHOENIX-MESA GATEWAY (IWA)