

WAAS CH 62911 W30A	APP CRS 303°	Rwy Idg 10201 TDZE 1380 Apt Elev 1382
--	------------------------	--

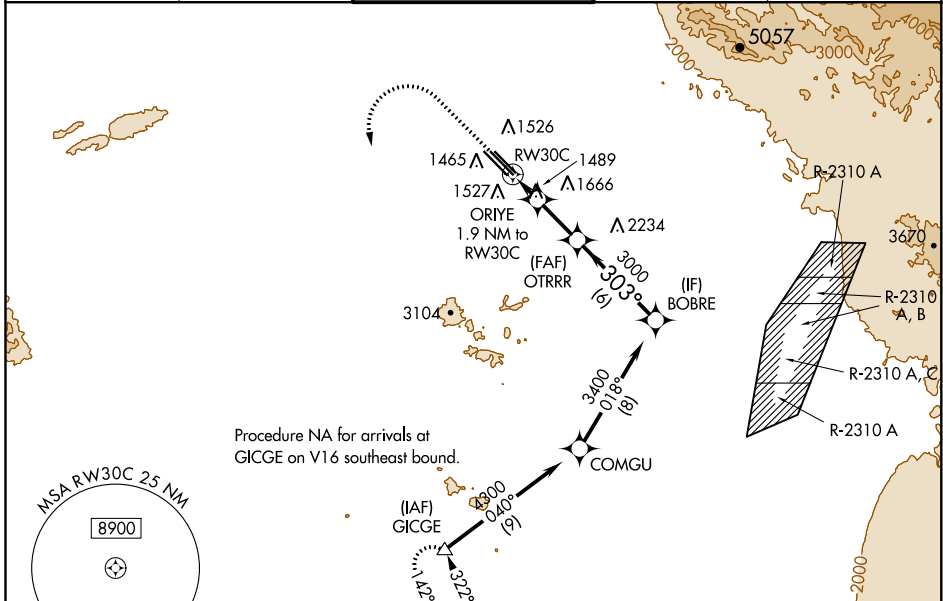
RNAV (GPS) Y RWY 30C

PHOENIX-MESA GATEWAY (IWA)

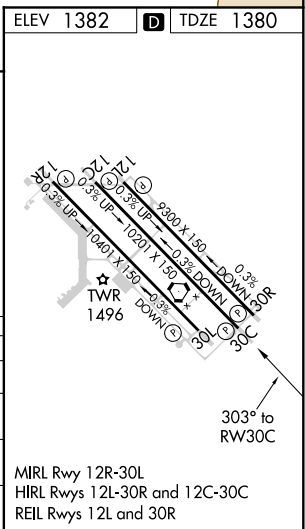
⚠ For uncompensated Baro-VNAV systems, LNAV/VNAV NA below -2°C (29°F) or above 35°C (95°F). DME/DME RNP-0.3 NA. When local altimeter setting not received, use Phoenix Sky Harbor Intl altimeter setting and increase all DA and MDA 80 feet, increase LPV all Cats visibility ½ mile and LNAV/VNAV all Cats, LNAV Cats C, D, and E, and Circling Cat E ¼ mile. VDP and Baro-VNAV NA with Phoenix Sky Harbor Intl altimeter setting.

MISSED APPROACH:
Climb to 2800 then climbing left turn to 5000 direct GICGE and hold.

ATIS * 133.5 270.275	PHOENIX APP CON 124.9 353.8	GATEWAY TOWER * 120.6 (CTAF) 289.4	GND CON 128.25 275.8	CLNC DEL 135.05
--------------------------------	---------------------------------------	--	--------------------------------	---------------------------



2800	5000	GICGE	VGS1 and RNAV glidepath not coincident (VGS1 Angle 3.00/TCH 49).				
*LNAV only.		ORIYE 1.9 NM to RW30C	OTRRR 3000	BOBRE 3400			
*1.2 NM to RW30C			3000	303°			GP 3.00° TCH 42
1.2 NM		0.7	3.1 NM	6 NM			
CATEGORY	A	B	C	D	E		
LPV DA	1580-¾		200 (200-¾)				
LNAV/VNAV DA	1630-⅞		250 (300-⅞)				
LNAV MDA	1800-1	420 (500-1)	1800-1½		420 (500-1½)		
CIRCLING	1880-1	498 (500-1)	1880-1½	1940-2	2040-2¼	658 (700-2¼)	



SW-4, 31 DEC 2020 to 28 JAN 2021

SW-4, 31 DEC 2020 to 28 JAN 2021