

VORTAC GRD 115.5 Chan 102	APP CRS 080°	Rwy Idg 5001 TDZE 631 Apt Elev 631
---	------------------------	---

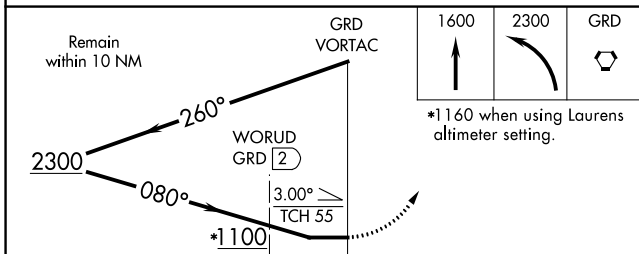
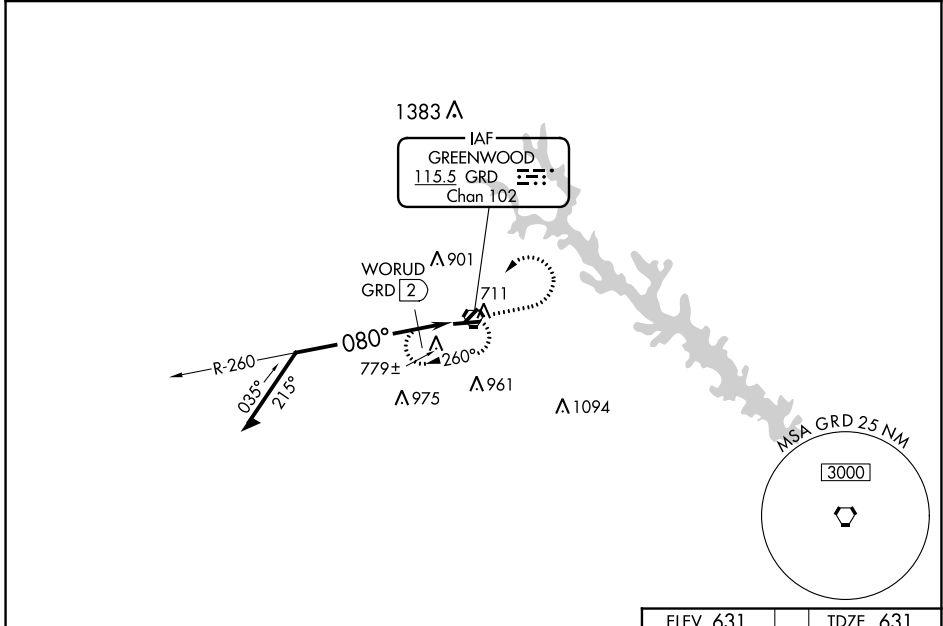
VOR RWY 9

GREENWOOD COUNTY (GRD)

⚠ Circling Rwy 5, 23 NA at night. When local altimeter setting not received, use Laurens altimeter setting: increase all MDA 60 feet and Cats C and D visibility ¼ SM. Rwy 9 helicopter visibility reduction below ¾ SM NA.

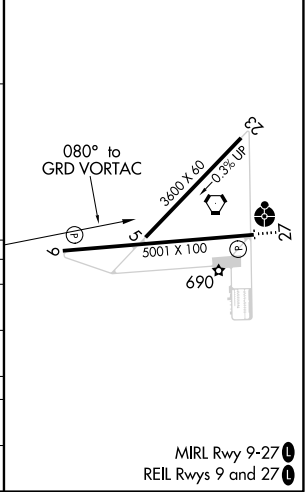
MISSED APPROACH: Climb to 1600 then climbing left turn to 2300 direct GRD VORTAC and hold.

ASOS 121.125	GREER APP CON ★ 120.6 350.2	UNICOM 122.975 (CTAF)
------------------------	---------------------------------------	---------------------------------



ELEV 631	TDZE 631
----------	----------

CATEGORY	A	B	C	D
S-9	1100-1	469 (500-1)	1100-1 ³ / ₈	469 (500-1 ³ / ₈)
C CIRCLING	1100-1	469 (500-1)	1320-2 689 (700-2)	1340-2 ¹ / ₄ 709 (800-2 ¹ / ₄)
WORUD FIX MINIMUMS (DME REQUIRED)				
S-9	1040-1	409 (500-1)	1040-1 ¹ / ₈	409 (500-1 ¹ / ₈)
C CIRCLING	1080-1 449 (500-1)	1100-1 469 (500-1)	1320-2 689 (700-2)	1340-2 ¹ / ₄ 709 (800-2 ¹ / ₄)



MIRL Rwy 9-27 **⚠**
REIL Rwys 9 and 27 **⚠**

SE-2, 31 DEC 2020 to 28 JAN 2021

SE-2, 31 DEC 2020 to 28 JAN 2021