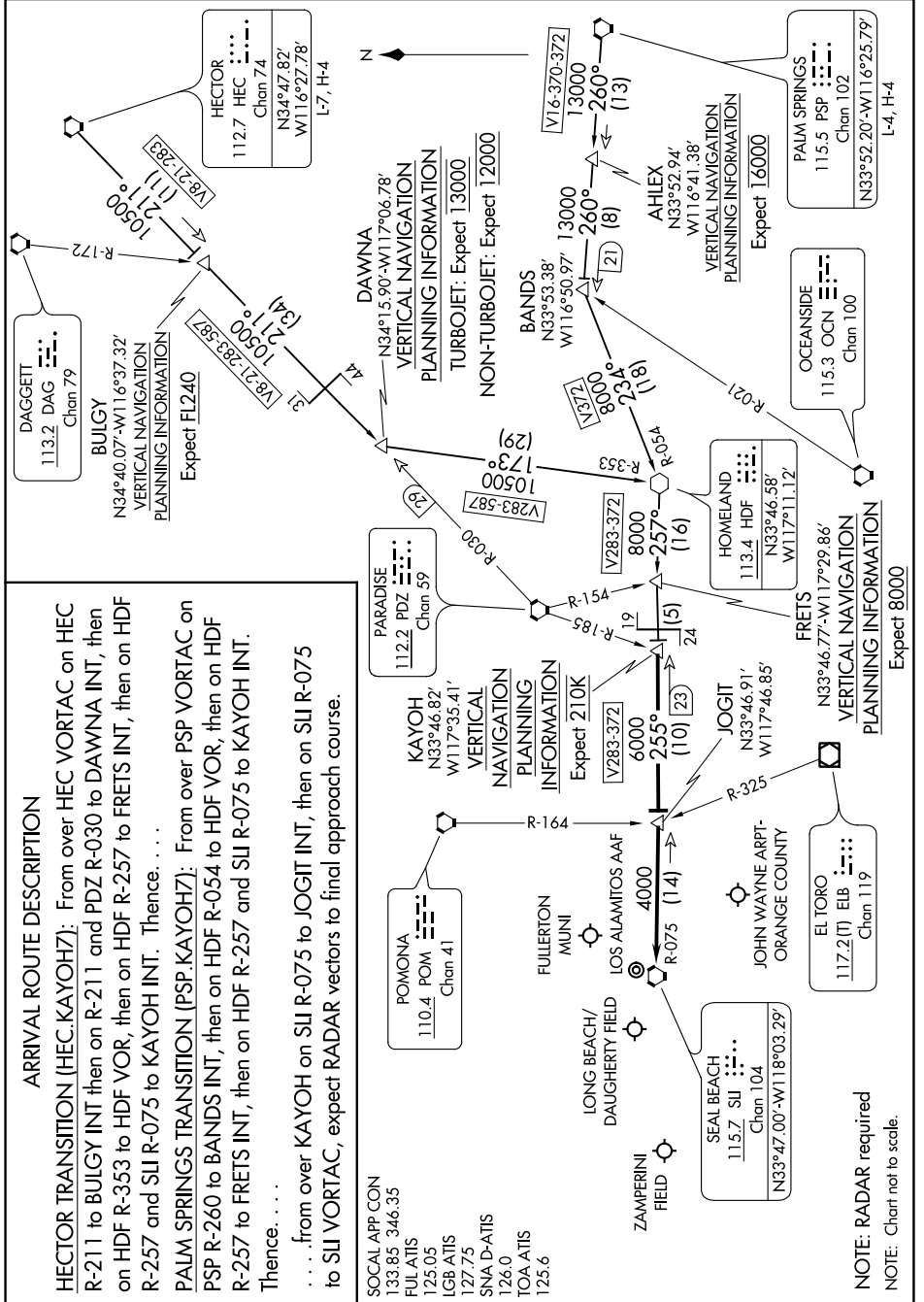


KAYOH SEVEN ARRIVAL

AL-236 (FAA)

LONG BEACH, CALIFORNIA

SW-3, 31 DEC 2020 to 28 JAN 2021



KAYOH SEVEN ARRIVAL

LONG BEACH, CALIFORNIA

SW-3, 31 DEC 2020 to 28 JAN 2021

ARRIVAL ROUTE DESCRIPTION

HECTOR TRANSITION (HEC.KAYOH7): From over HEC VORTAC on HEC R-211 to BULGY INT then on R-211 and PDZ R-030 to DAWNA INT, then on HDF R-353 to HDF VOR, then on HDF R-257 to FRETTS INT, then on HDF R-257 and SLI R-075 to KAYOH INT. Thence. . . .

PALM SPRINGS TRANSITION (PSP.KAYOH7): From over PSP VORTAC on PSP R-260 to BANDS INT, then on HDF R-054 to HDF VOR, then on HDF R-257 to FRETTS INT, then on HDF R-257 and SLI R-075 to KAYOH INT. Thence. . . .

. . . . from over KAYOH on SLI R-075 to JOGIT INT, then on SLI R-075 to SLI VORTAC, expect RADAR vectors to final approach course.

- SOCAL APP CON
133.85 346.35
- FULL ATIS
125.05
- LGB ATIS
127.75
- SNA D-ATIS
126.0
- TOA-ATIS
125.6

NOTE: RADAR required
NOTE: Chart not to scale.