

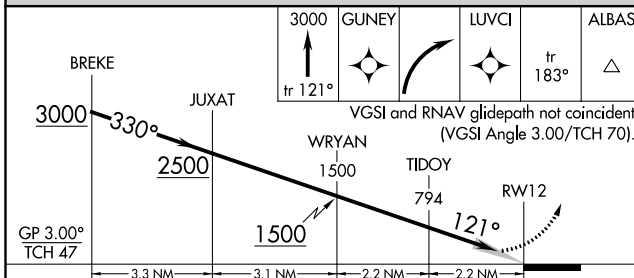
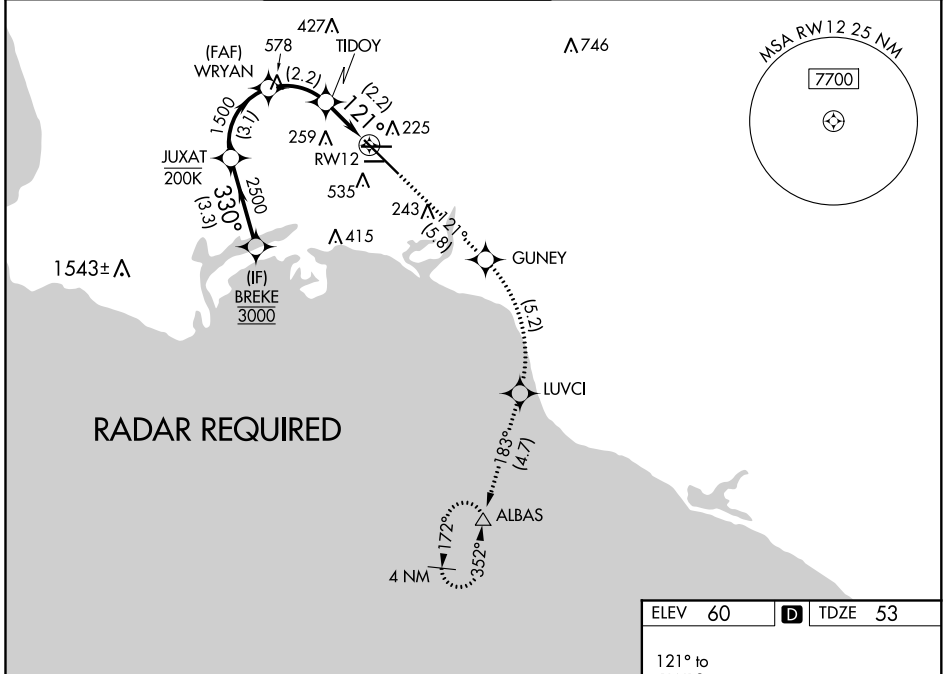
APP CRS	Rwy Idg	<b>8650</b>
<b>121°</b>	TDZE	<b>53</b>
	Apt Elev	<b>60</b>

# RNAV (RNP) RWY 12

LONG BEACH/DAUGHERTY FIELD (LGB)

<p><b>▽</b> <b>▲</b></p>	<p>For uncompensated Baro-VNAV systems, procedure NA below 4°C (40°F) or above 54°C (130°F). RF required. GPS required.</p>	<p>MISSED APPROACH: Climb to 3000 on track 121° to GUNEY, right turn to LUVCI, and on track 183° to ALBAS and hold.</p>
------------------------------	---	---

ATIS <b>127.75</b>	SOCAL APP CON <b>125.35 316.125</b>	LONG BEACH TOWER* <b>120.5 257.6</b> (Rwy 12) <b>119.4</b> (CTAF) <b>257.6</b> (Rwy 30)	GND CON <b>133.0 257.6</b>	CLNC DEL <b>118.15</b>	UNICOM <b>122.95</b>
-----------------------	--	---	-------------------------------	---------------------------	-------------------------



ELEV 60	<b>D</b> TDZE 53
---------	------------------

TDZ/CL Rwy 30  
HIRL Rwy 12-30  
HIRL Rwy 8R-26L  
MIRL Rwy 8L-26R  
REIL Rwys 8R, 12, 26L, and 26R

CATEGORY	A	B	C	D
RNP 0.15 DA		414-1¼	361 (400-1¼)	
RNP 0.30 DA		485-1½	432 (500-1½)	

**AUTHORIZATION REQUIRED**

SW-3, 31 DEC 2020 to 28 JAN 2021

SW-3, 31 DEC 2020 to 28 JAN 2021